

Legend:

- Focus Area of Interest
- Other Area of Interest
- Blueberry River First Nation Indian Reserve
- Other Indian Reserve
- Park or Protected Area
- Municipality

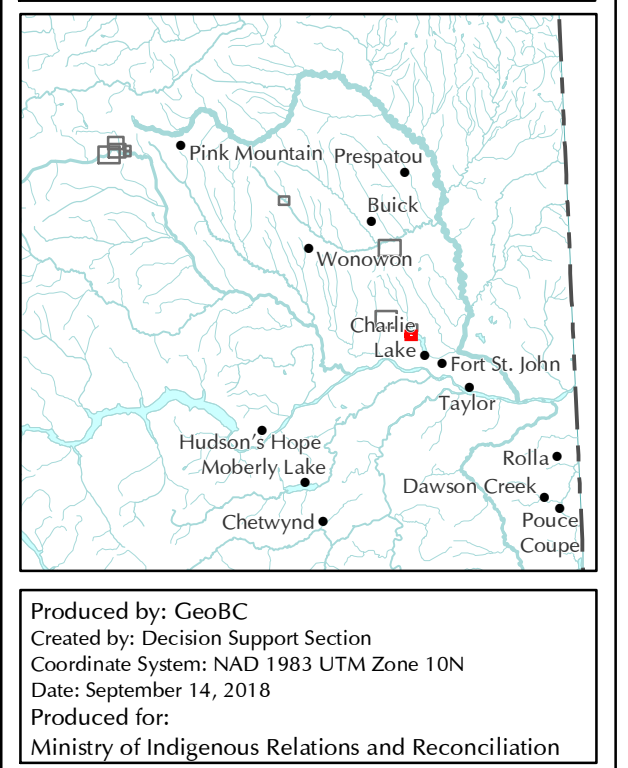
Confidential and Without Prejudice.  
For internal use only.  
Do not distribute.

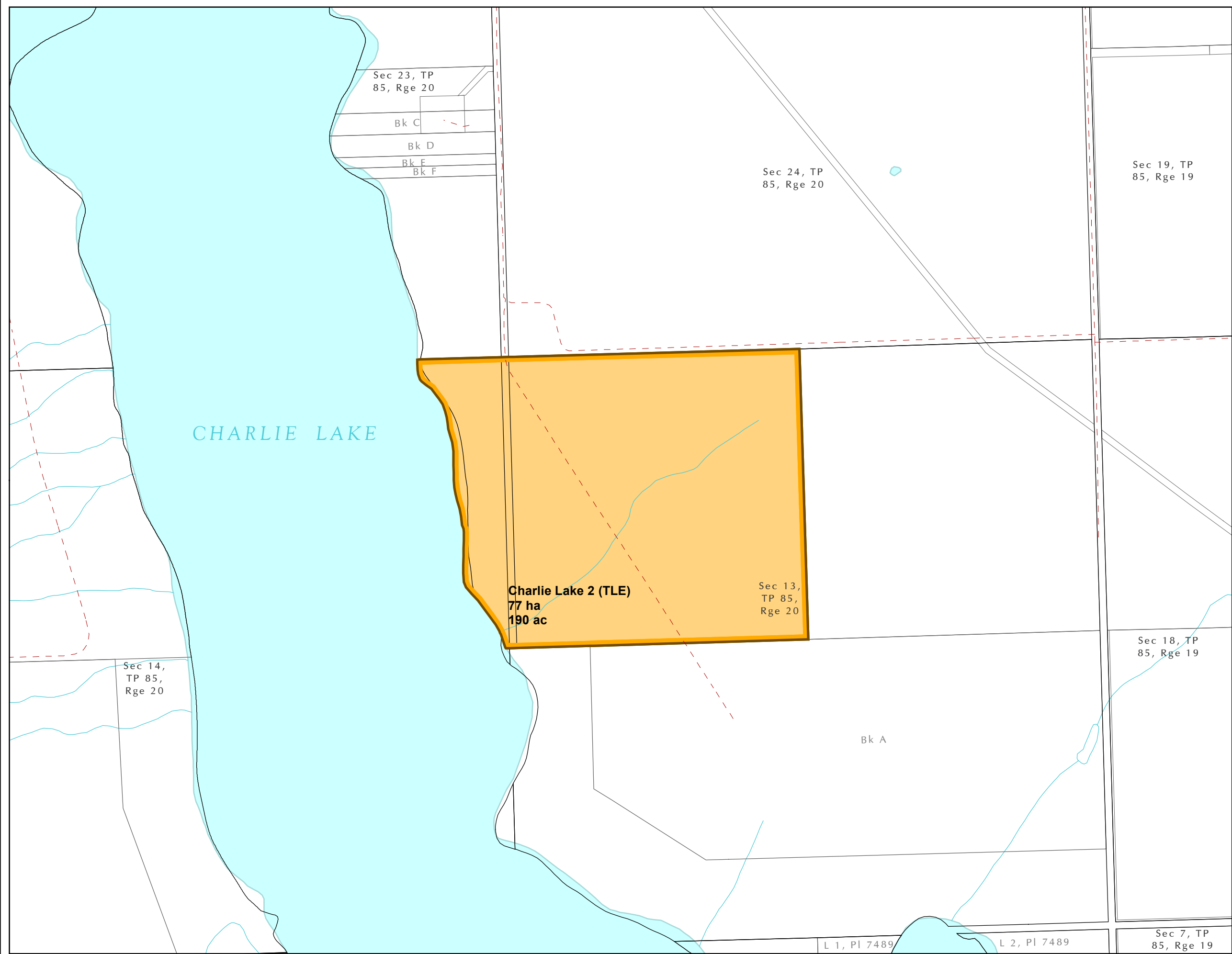
**DRAFT**

1:10,000

0 250  
Metres

North arrow pointing North (N), South (S), East (E), and West (W).





Blueberry River First Nation

Area of Interest Confirmation

Charlie Lake 2 (TLE)

Map 2 of 10

Focus Area of Interest

Other Area of Interest

Blueberry River First Nation Indian Reserve

Other Indian Reserve

Park or Protected Area

Municipality

Confidential and Without Prejudice.  
For internal use only.  
Do not distribute.

N

W

E

S

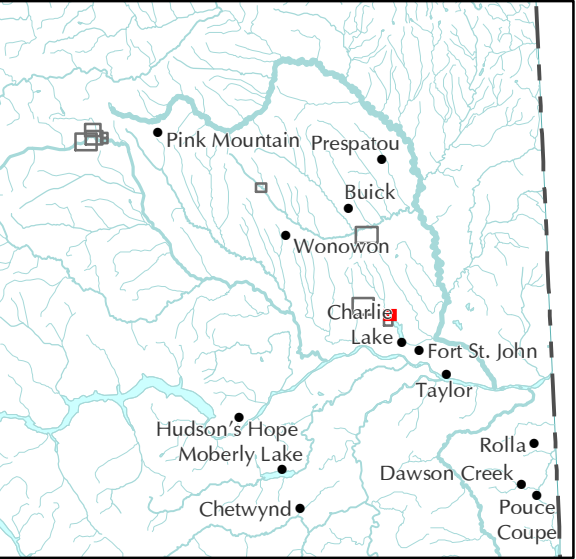
DRAFT

1:10,000

0

250

Metres



Produced by: GeoBC

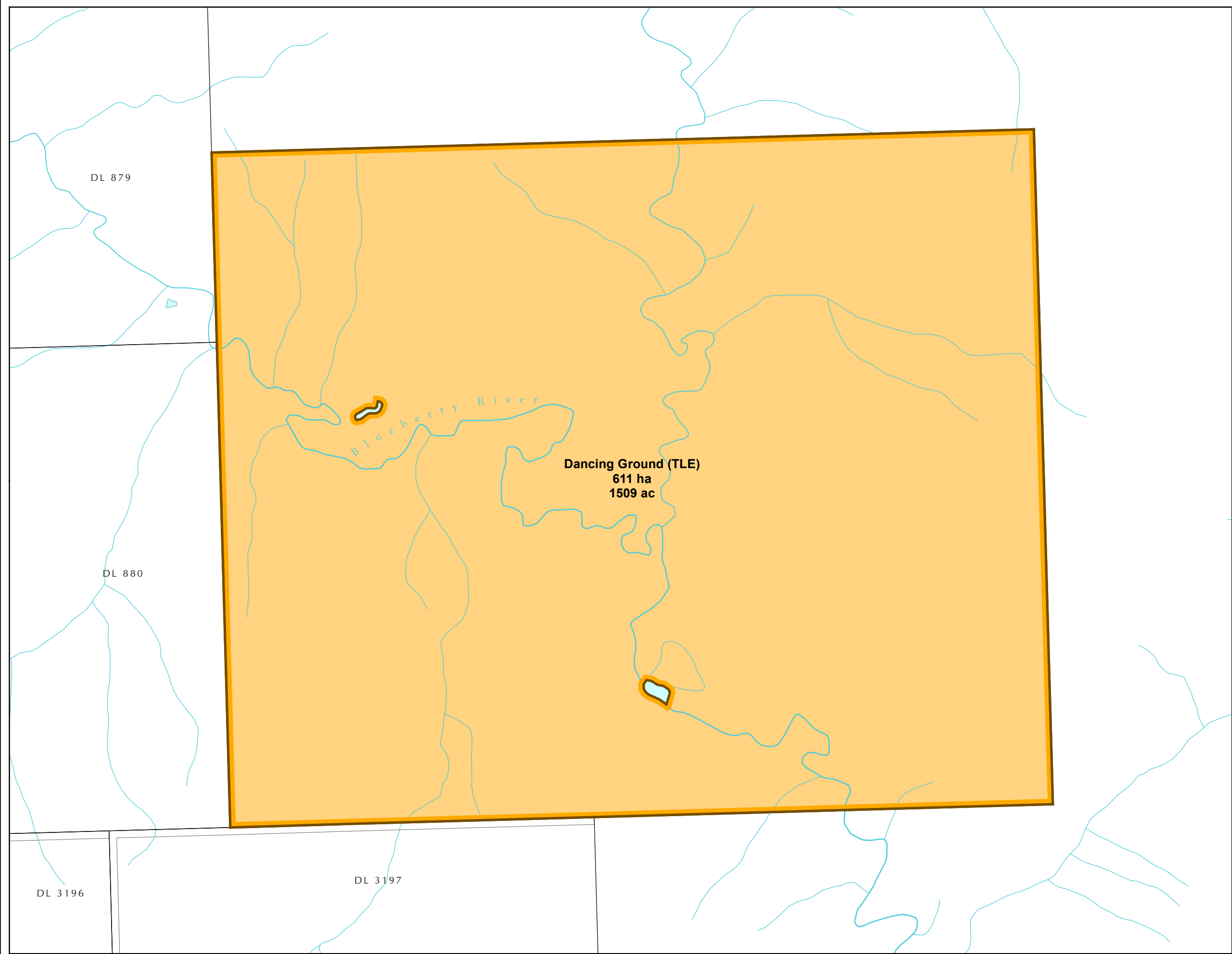
Created by: Decision Support Section

Coordinate System: NAD 1983 UTM Zone 10N

Date: September 14, 2018

Produced for:

Ministry of Indigenous Relations and Reconciliation



Blueberry River First Nation  
Area of Interest Confirmation  
Dancing Ground (TLE)  
Map 3 of 10

Focus Area of Interest

Other Area of Interest

Blueberry River First Nation Indian Reserve

Other Indian Reserve

Park or Protected Area

Municipality

Confidential and Without Prejudice.  
For internal use only.  
Do not distribute.

DRAFT

N

W

E

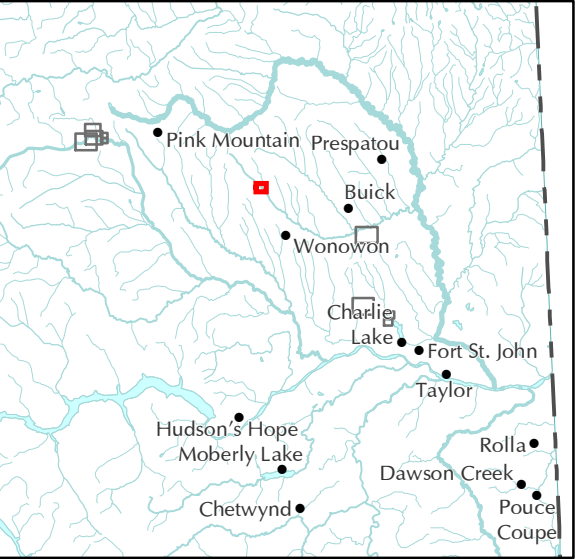
S

1:12,000

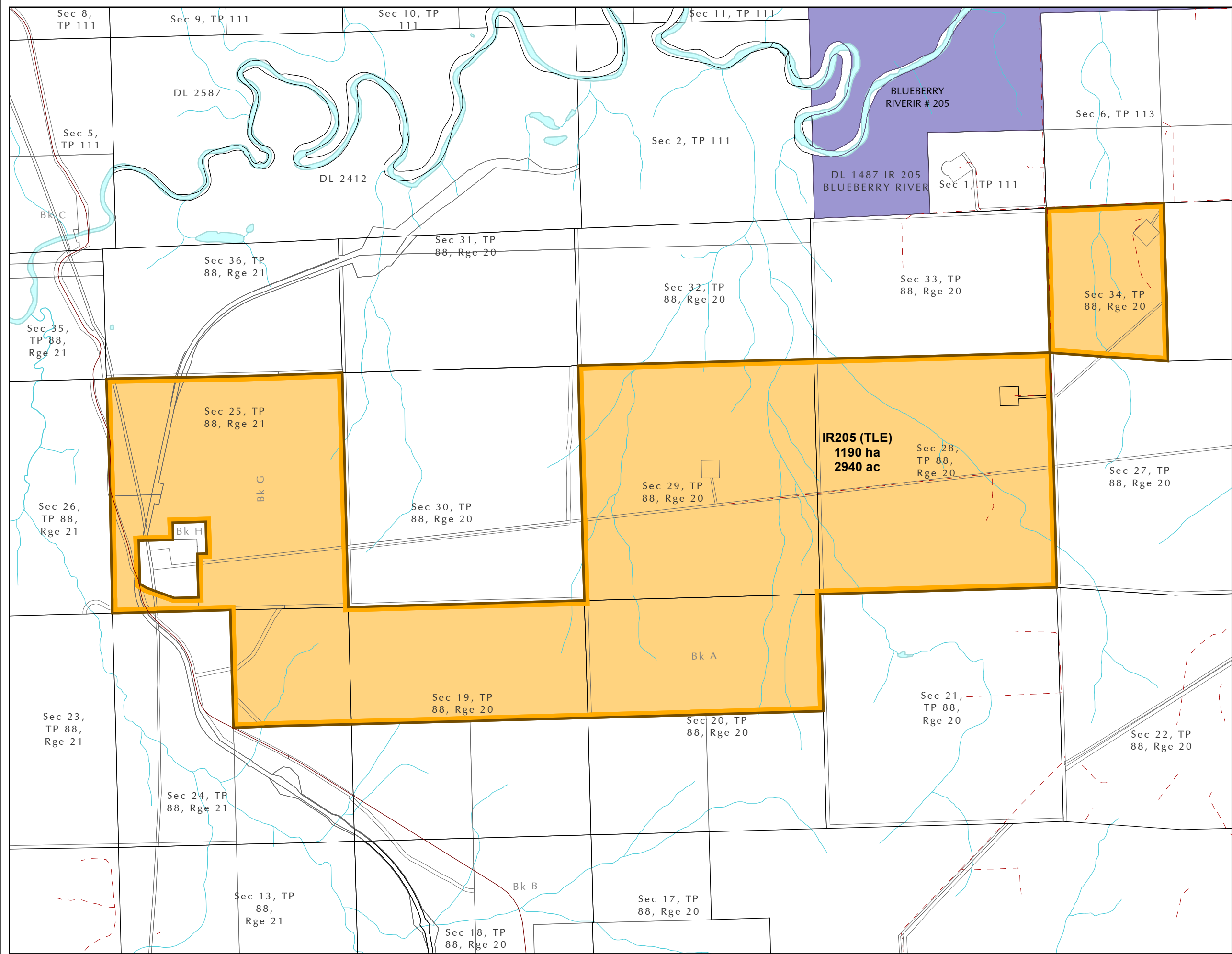
0

250

Metres



Produced by: GeoBC  
Created by: Decision Support Section  
Coordinate System: NAD 1983 UTM Zone 10N  
Date: September 14, 2018  
Produced for:  
Ministry of Indigenous Relations and Reconciliation



# Blueberry River First Nation Area of Interest Confirmation IR205 (TLE) Map 4 of 10

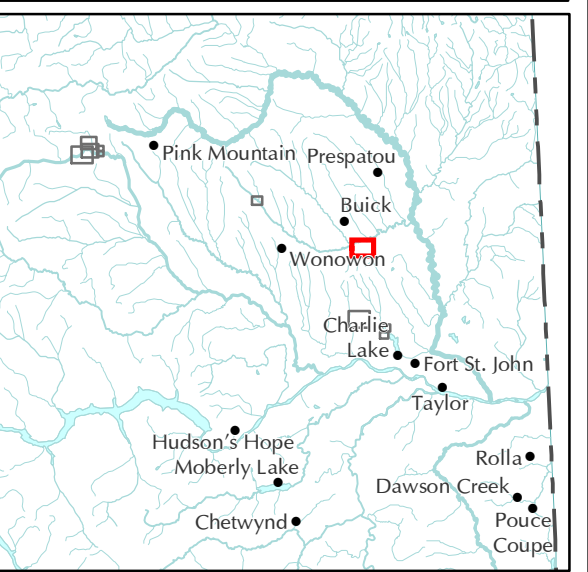
- Focus Area of Interest
- Other Area of Interest
- Blueberry River First Nation Indian Reserve
- Other Indian Reserve
- Park or Protected Area
- Municipality

Confidential and Without Prejudice.  
For internal use only.  
Do not distribute.

**DRAFT**

1:25,000

0 250  
Metres



Produced by: GeoBC  
Created by: Decision Support Section  
Coordinate System: NAD 1983 UTM Zone 10N  
Date: September 14, 2018  
Produced for:  
Ministry of Indigenous Relations and Reconciliation

The map displays the Blueberry River First Nation Indian Reserve, which is outlined in black. Within the reserve, several areas are highlighted with colored rectangles: a yellow rectangle for the Focus Area of Interest, an orange rectangle for the Other Area of Interest, a blue rectangle for the Blueberry River First Nation Indian Reserve, a light blue rectangle for the Other Indian Reserve, and a green rectangle for the Park or Protected Area. A dashed black rectangle indicates the Municipality. The map includes a north arrow pointing upwards, labeled with N, S, E, and W. A scale bar at the bottom indicates a distance of 250 metres. The map is labeled with the following text:

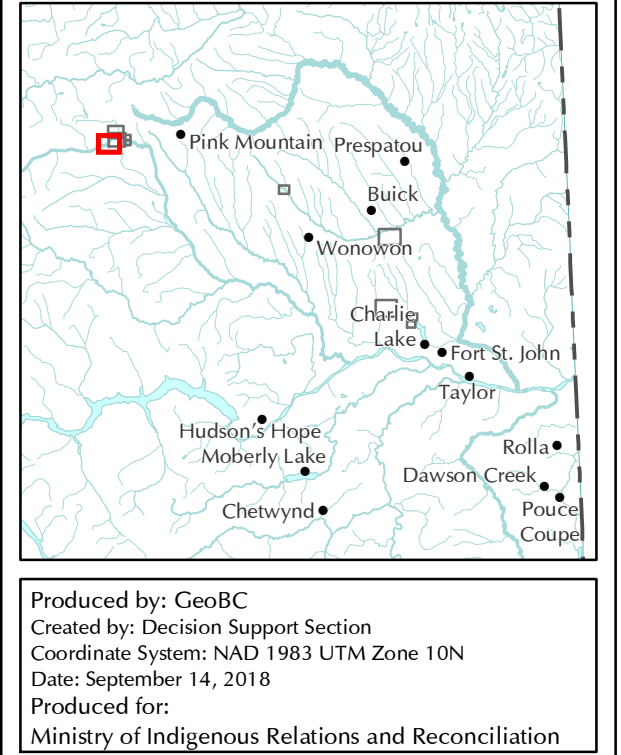
- Focus Area of Interest
- Other Area of Interest
- Blueberry River First Nation Indian Reserve
- Other Indian Reserve
- Park or Protected Area
- Municipality

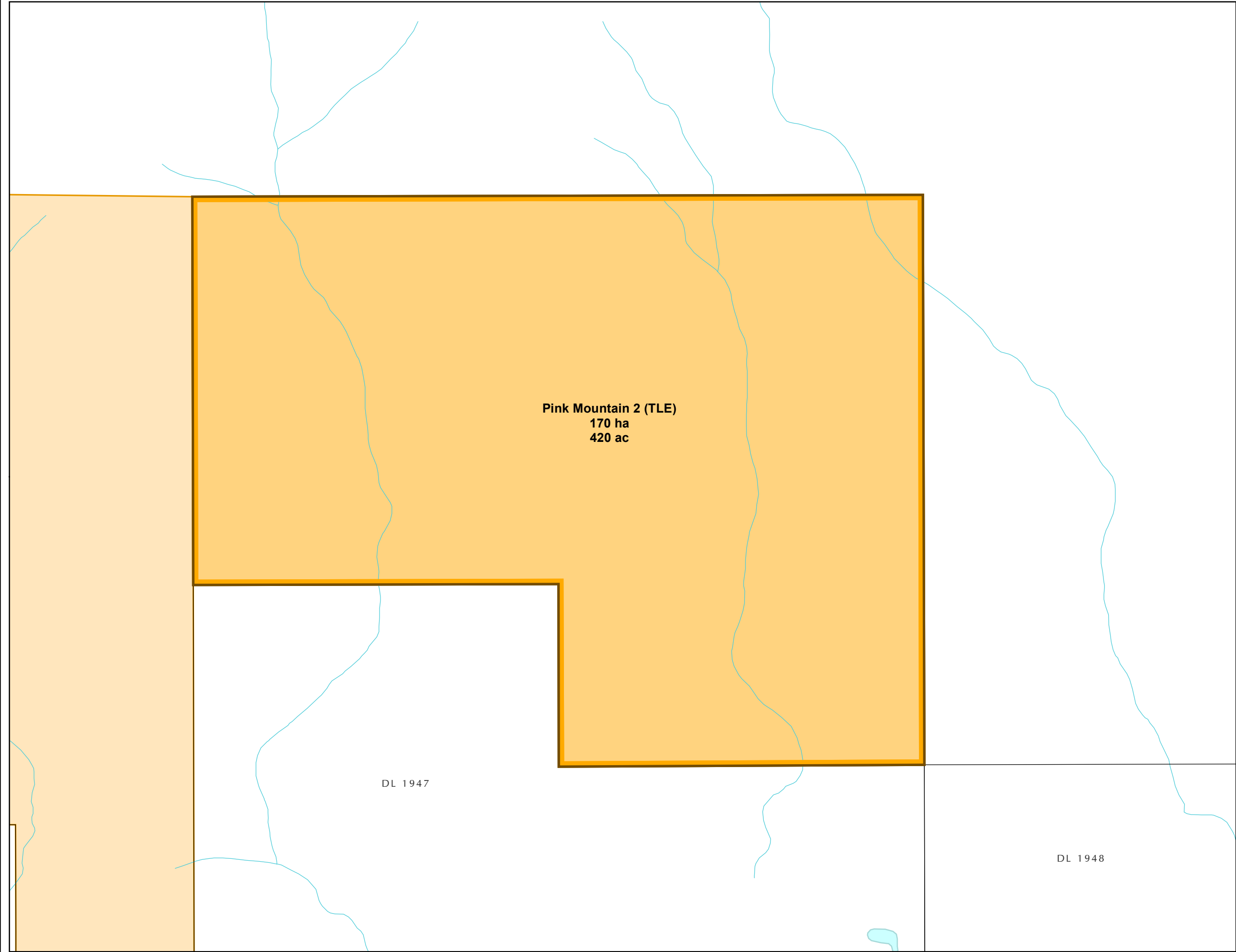
Confidential and Without Prejudice.  
For internal use only.  
Do not distribute.

**DRAFT**

1:25,000

0 250  
Metres





Blueberry River First Nation  
Area of Interest Confirmation  
Pink Mountain 2 (TLE)  
Map 6 of 10

Focus Area of Interest

Other Area of Interest

Blueberry River First Nation Indian Reserve

Other Indian Reserve

Park or Protected Area

Municipality

Confidential and Without Prejudice.  
For internal use only.  
Do not distribute.

DRAFT

N  
W  
E  
S

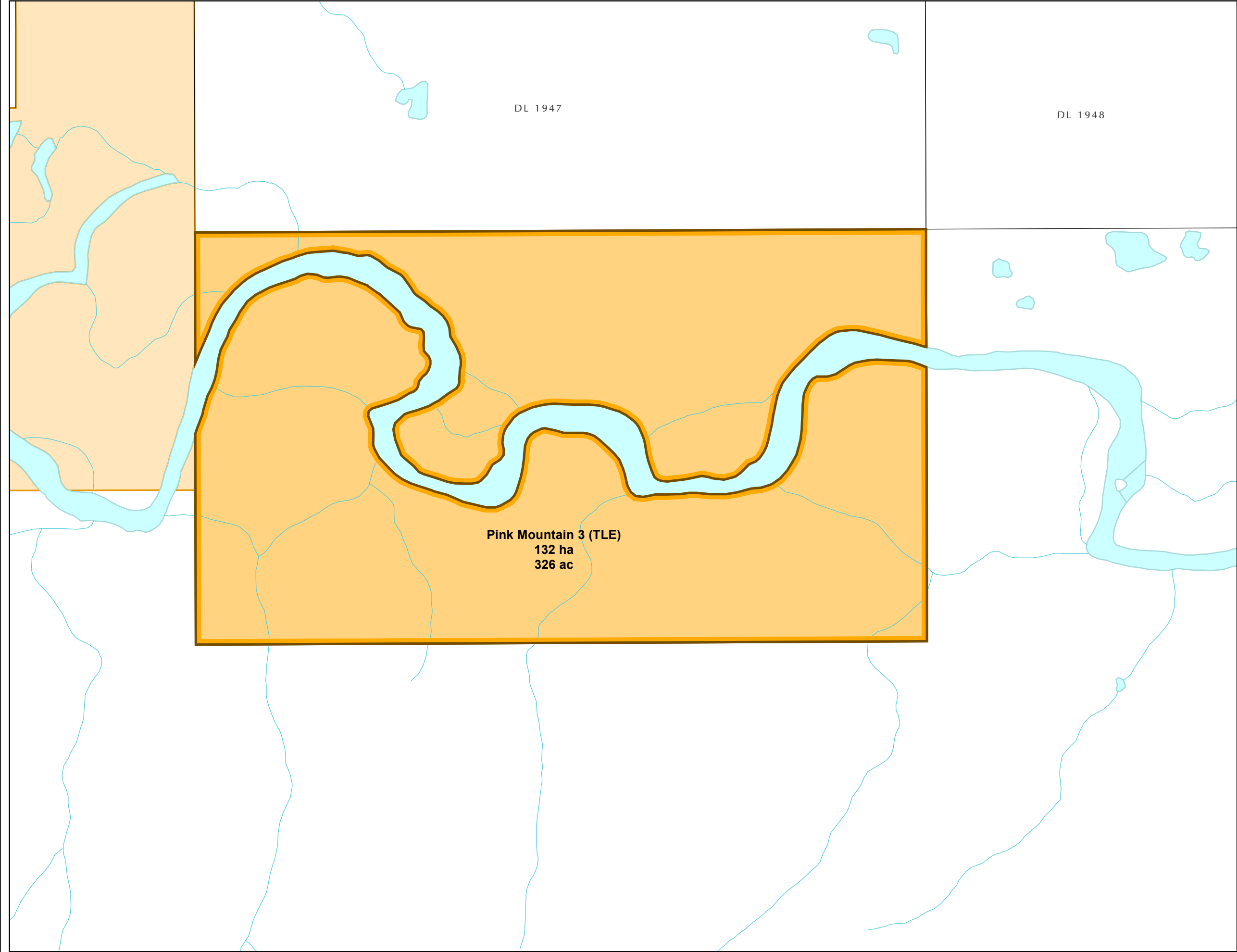
1:8,000

0250

Metres



Produced by: GeoBC  
Created by: Decision Support Section  
Coordinate System: NAD 1983 UTM Zone 10N  
Date: September 14, 2018  
Produced for:  
Ministry of Indigenous Relations and Reconciliation



Blueberry River First Nation  
Area of Interest Confirmation  
Pink Mountain 3 (TLE)  
Map 7 of 10

Focus Area of Interest

Other Area of Interest

Blueberry River First Nation Indian Reserve

Other Indian Reserve

Park or Protected Area

Municipality

Confidential and Without Prejudice.  
For internal use only.  
Do not distribute.

N  
W  
E  
S

DRAFT

1:8,000






0250

Metres

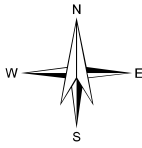


Produced by: GeoBC  
Created by: Decision Support Section  
Coordinate System: NAD 1983 UTM Zone 10N  
Date: September 14, 2018  
Produced for:  
Ministry of Indigenous Relations and Reconciliation

Blueberry River First Nation  
Area of Interest Confirmation  
Pink Mountain 4 (TLE)  
Map 8 of 10

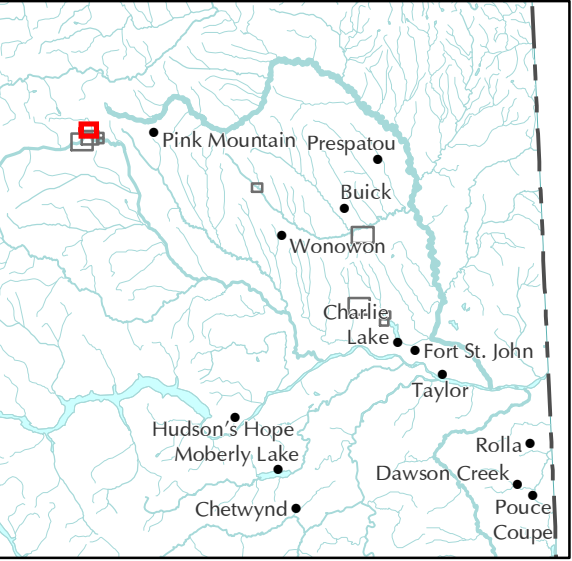
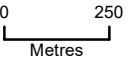
-  Focus Area of Interest
-  Other Area of Interest
-  Blueberry River First Nation Indian Reserve
-  Other Indian Reserve
-  Park or Protected Area
-  Municipality

Confidential and Without Prejudice.  
For internal use only.  
Do not distribute.

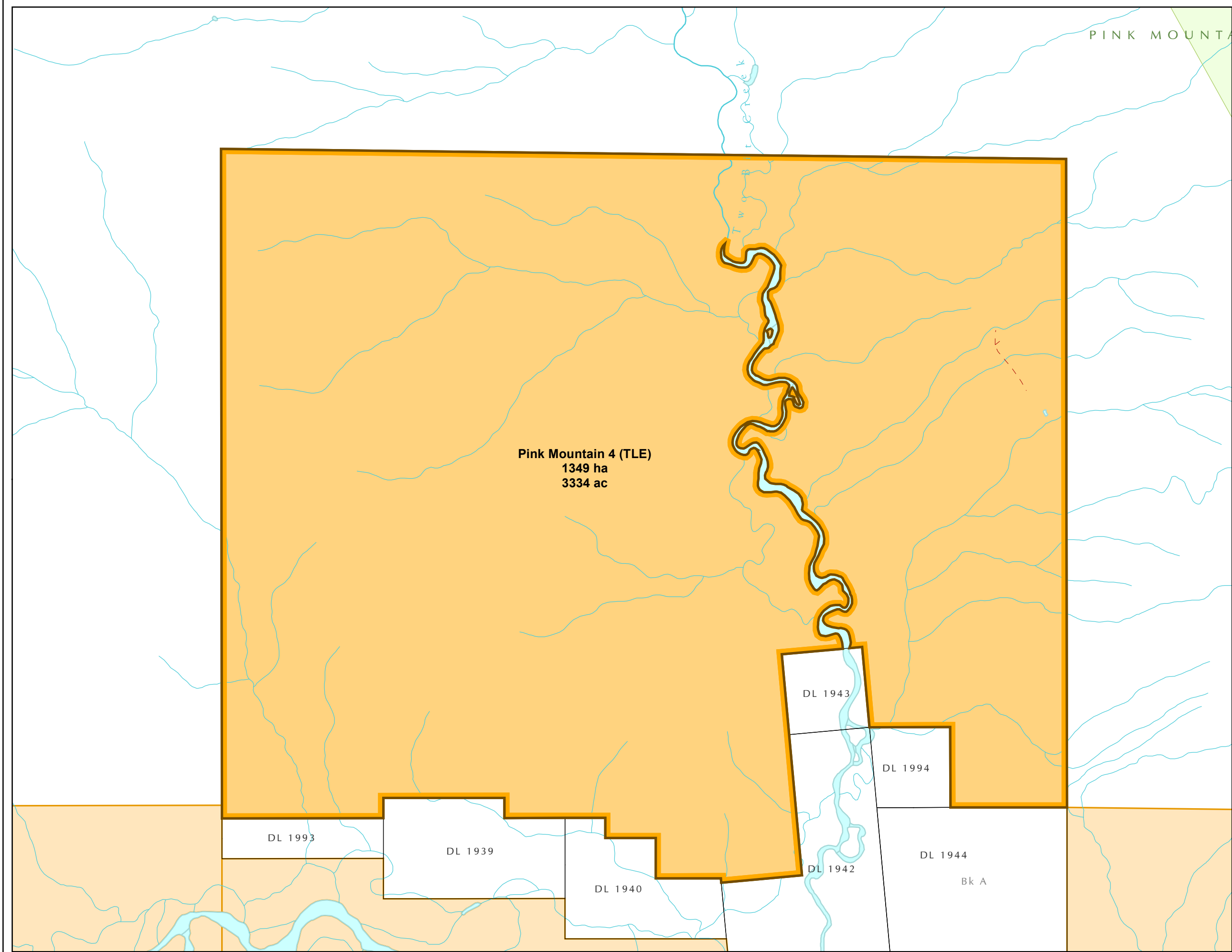


DRAFT

1:18,000



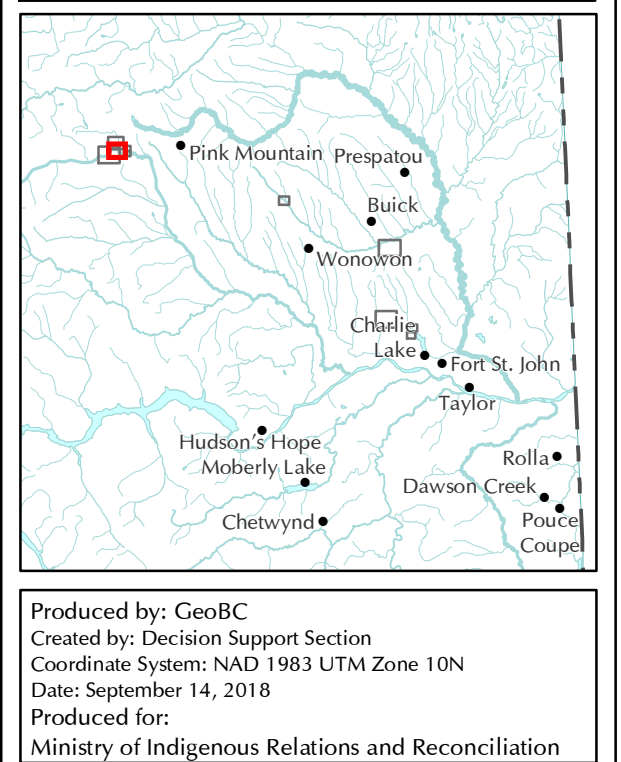
Produced by: GeoBC  
Created by: Decision Support Section  
Coordinate System: NAD 1983 UTM Zone 10N  
Date: September 14, 2018  
Produced for:  
Ministry of Indigenous Relations and Reconciliation

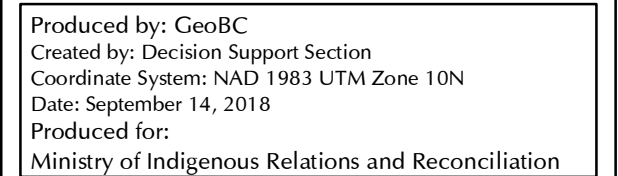


The map displays the Blueberry River First Nation Indian Reserve, which is outlined in black. Within the reserve, several areas are highlighted with different colors and patterns:

- Focus Area of Interest:** A small orange rectangle in the upper left corner.
- Other Area of Interest:** A larger orange rectangle in the upper middle section.
- Blueberry River First Nation Indian Reserve:** The entire area is outlined in black.
- Other Indian Reserve:** A purple rectangle in the lower left corner.
- Park or Protected Area:** A light green rectangle in the lower middle section.
- Municipality:** A dashed black rectangle in the lower right corner.

At the bottom of the map, there is a north arrow pointing upwards, labeled with 'N', 'S', 'E', and 'W'. To the right of the north arrow, the word 'DRAFT' is written in large, red, outlined letters. Below 'DRAFT', the scale '1:20,000' is indicated. At the very bottom, there is a scale bar showing '0' and '250' metres.





N:\projects\TLE\ArcGISProjects\Blueberry River\Blueberry River First Nation AOI Confirmation - Detail.mxd [2018.09.14] [12:35:51]