

New Highway 3 Rail Overhead Replacement
- Three Span Concrete - 53m Length
-Wide Shoulders
-Barrier Protected Separate Sidewalk (south side)

Existing Highway 3 Access to be Closed

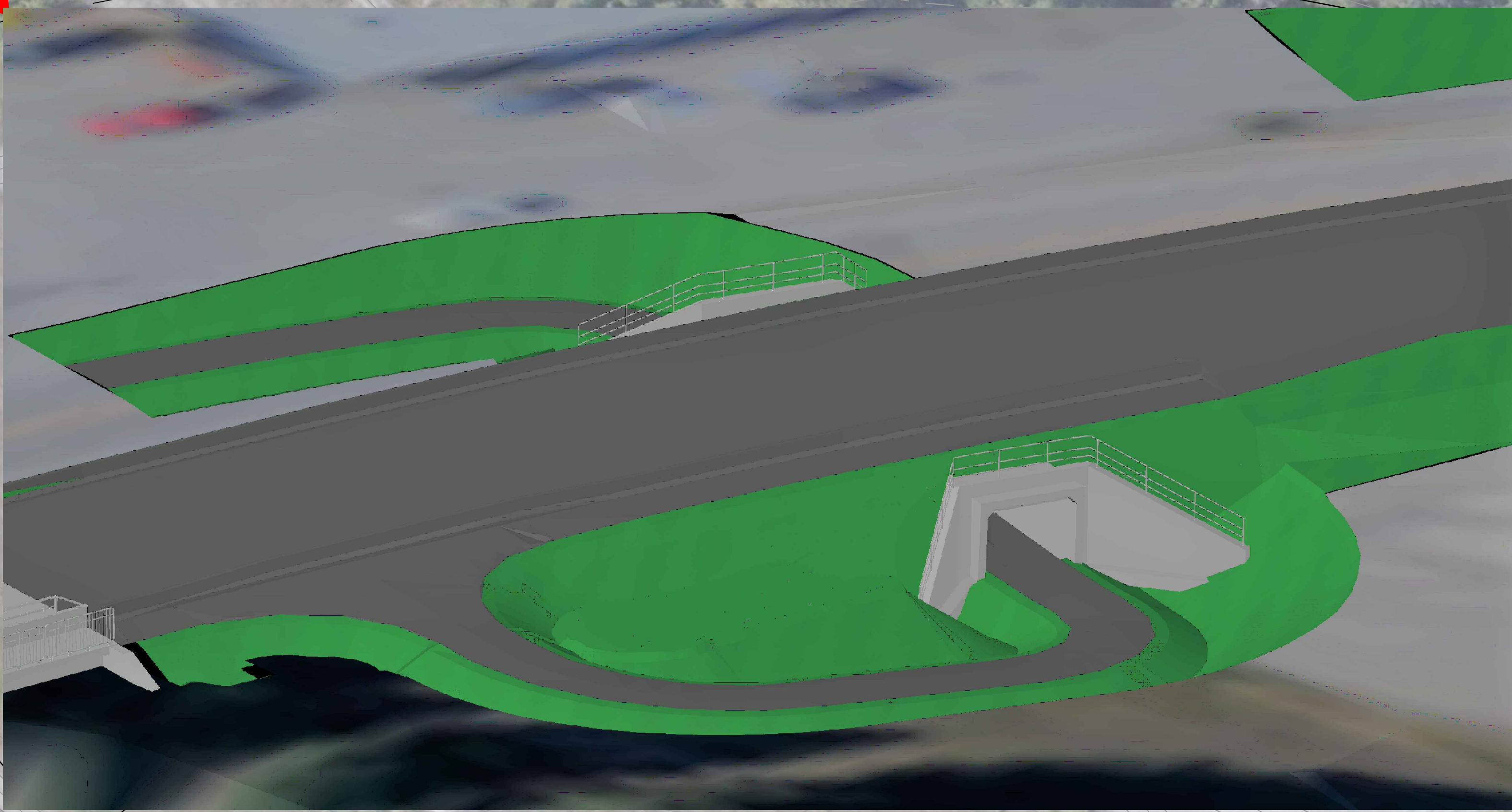
Existing Highway 3 Rail Overhead to remain open during construction

Improved Access Gas Station and Trailer Park Properties
- Accommodates Large Combination Vehicles
- Intersection Lighting

Improved Helena Road Intersection

Bate Avenue Safety Improvements
- Improved turning sight lines
- New Westbound Left Turn Lane
- Intersection Lighting

Property Access Improvements



Safety Improvements - New Pedestrian Crossing Underpass with Lighting (Wheelchair Accessible)

Bate Avenue - Minor Realignment with Wider Shoulder to Accommodate Pedestrians

HIGHWAY 3 ELKO - RAIL OVERHEAD REPLACEMENT PROJECT

0 20 1:400 100m