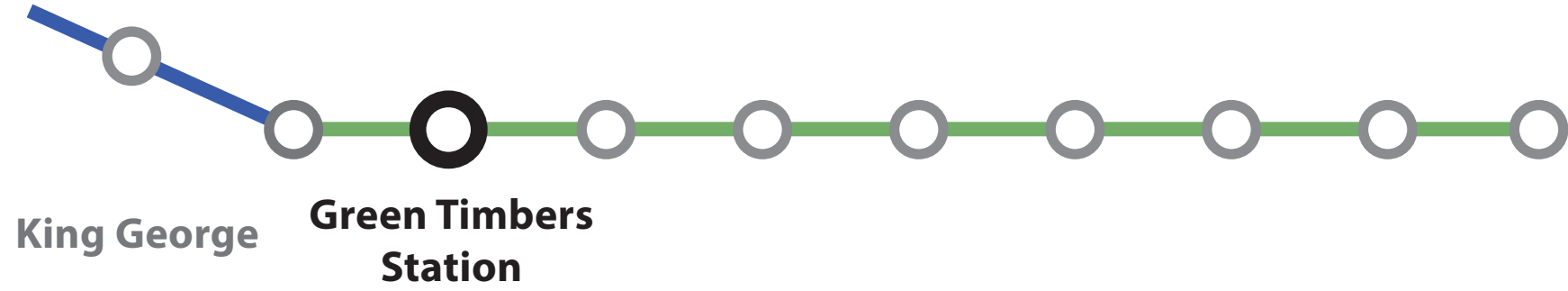


# Green Timbers Station

140 Street and Fraser Highway



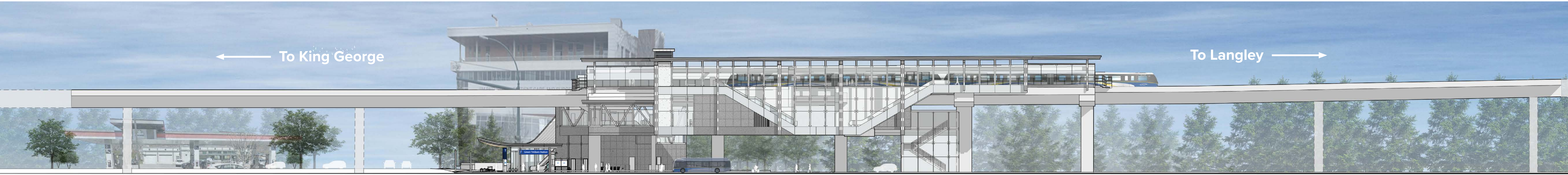
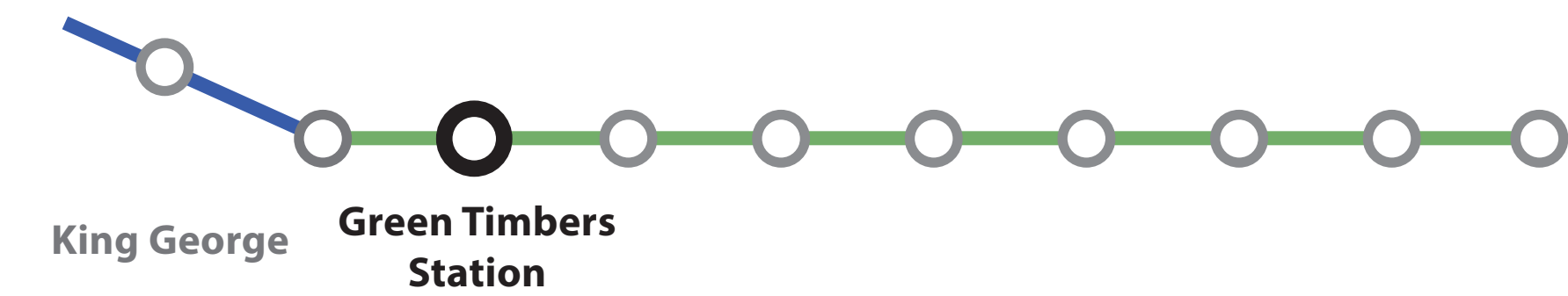
Conceptual rendering, subject to change; does not reflect future transit-oriented development





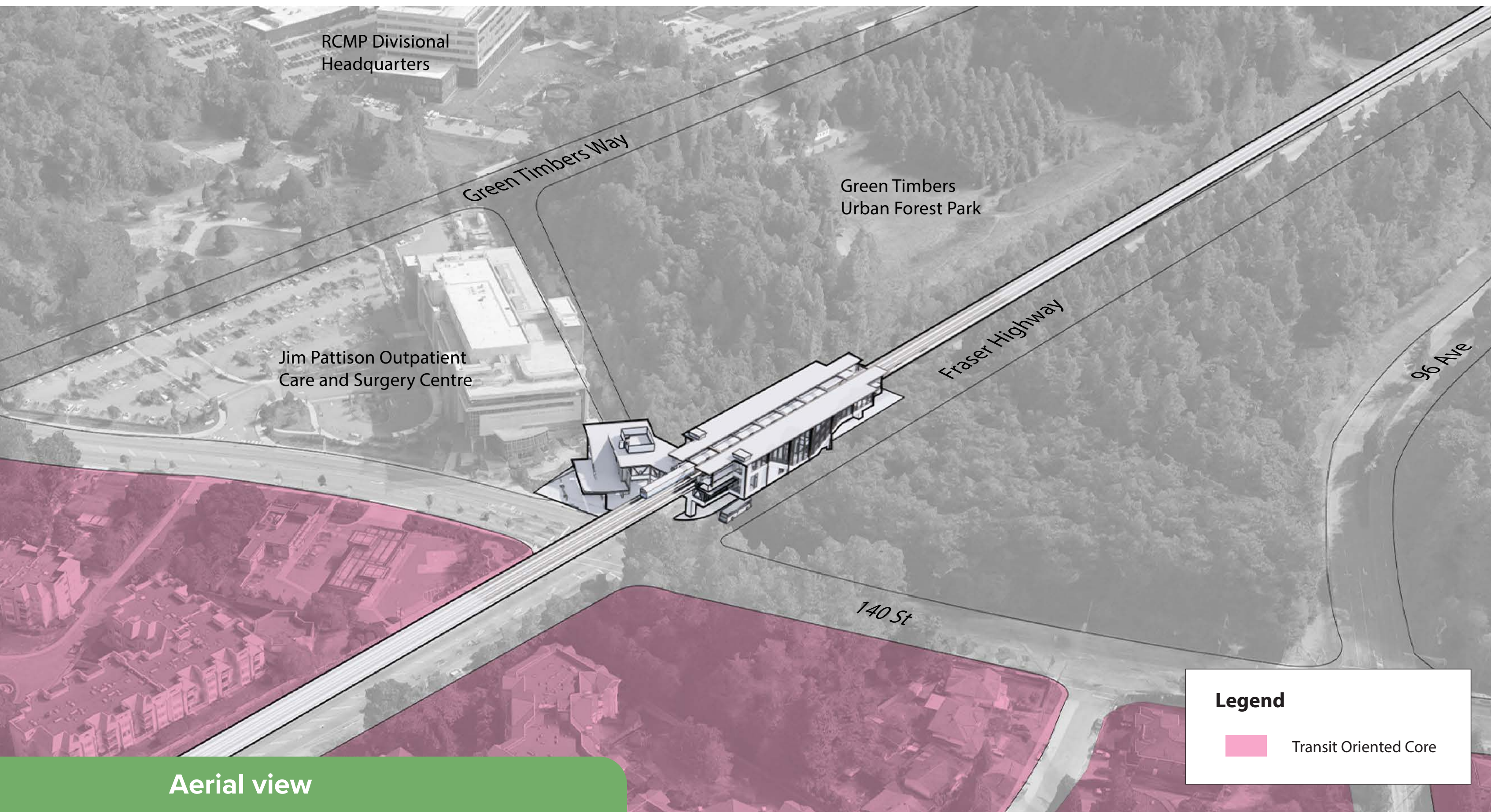
# Green Timbers Station

140 Street and Fraser Highway



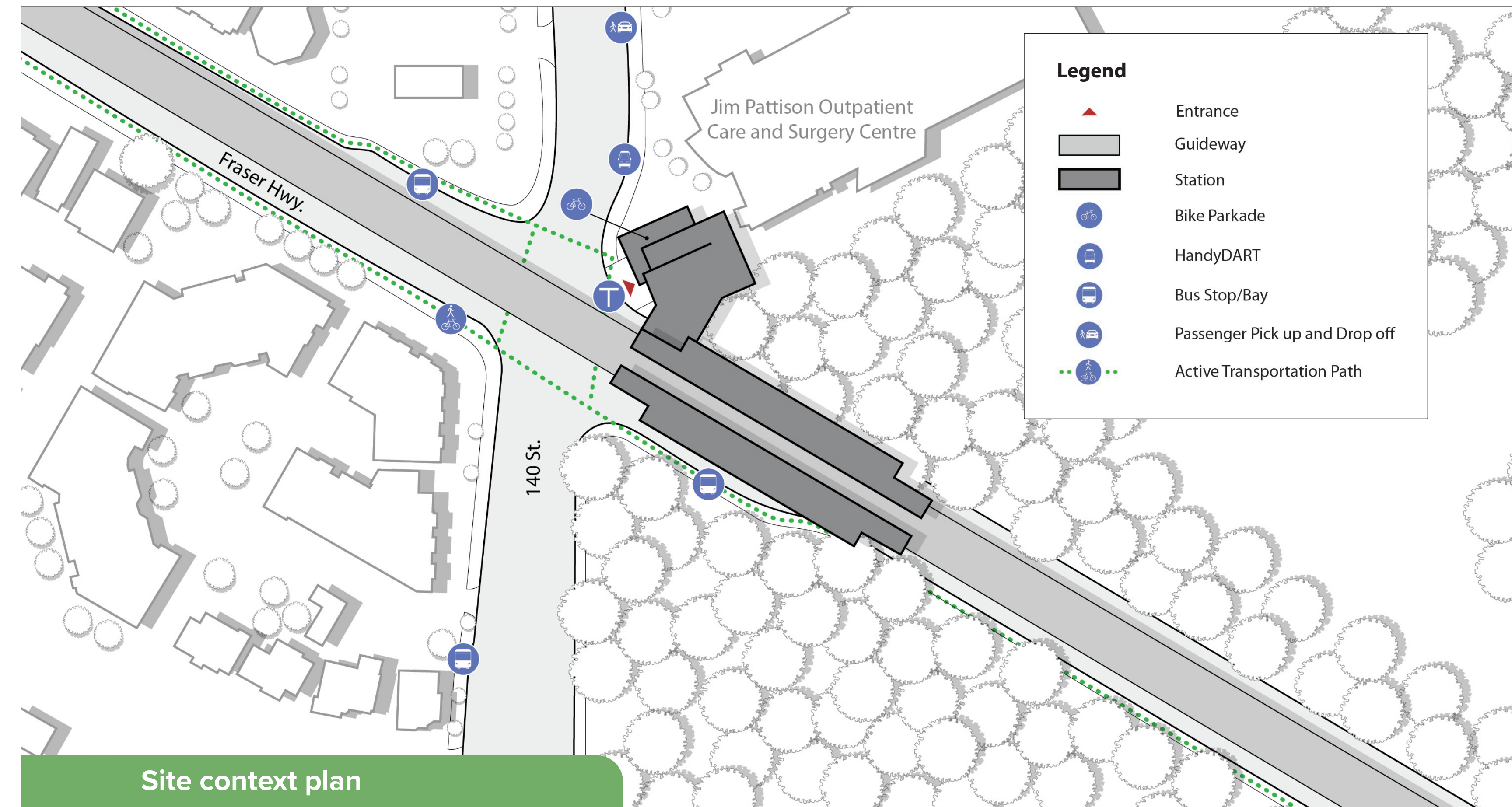
South elevation streetscape

Conceptual rendering, subject to change; does not reflect future transit-oriented development



Aerial view

**Legend**  
 Transit Oriented Core



Site context plan

**Legend**

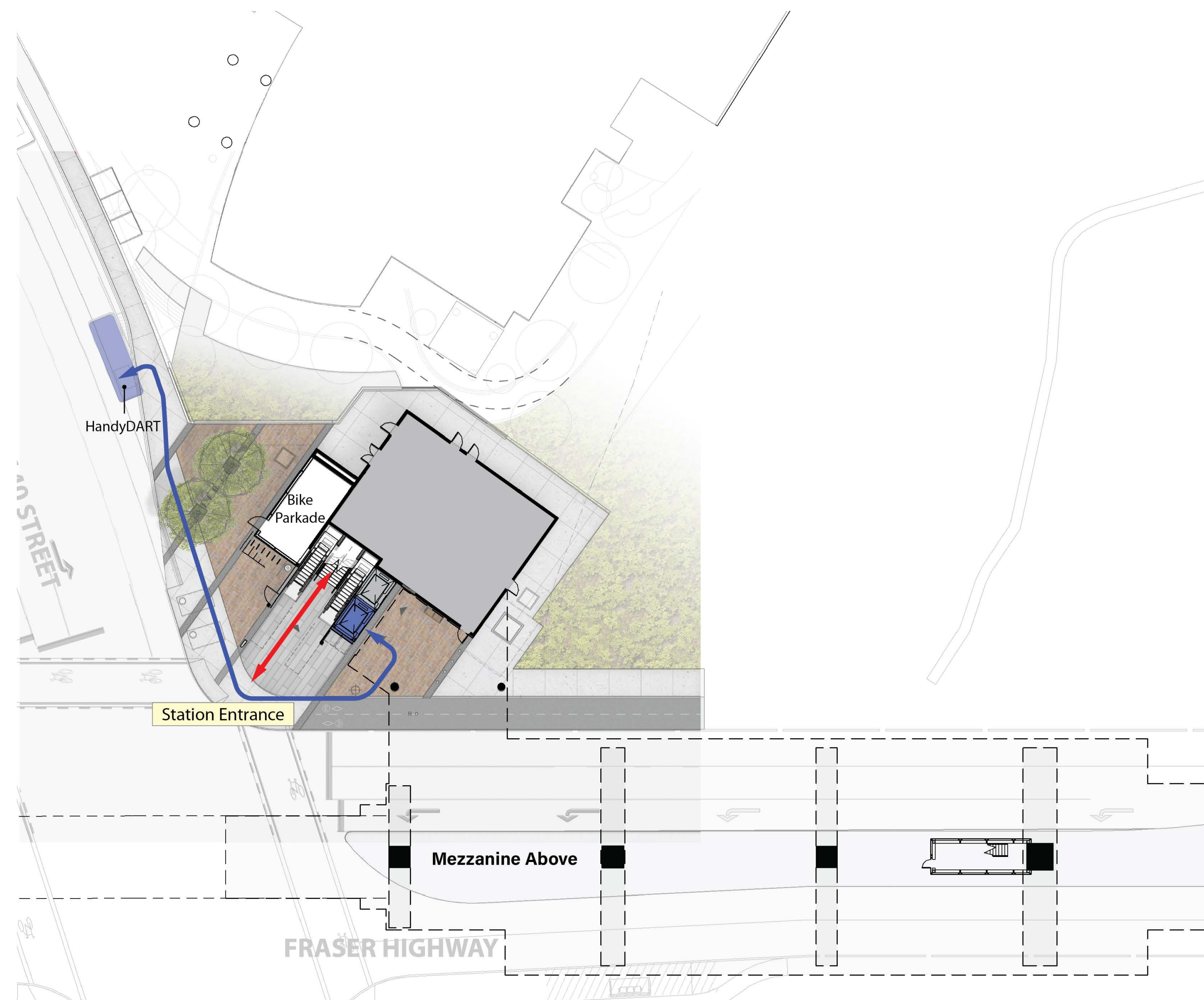
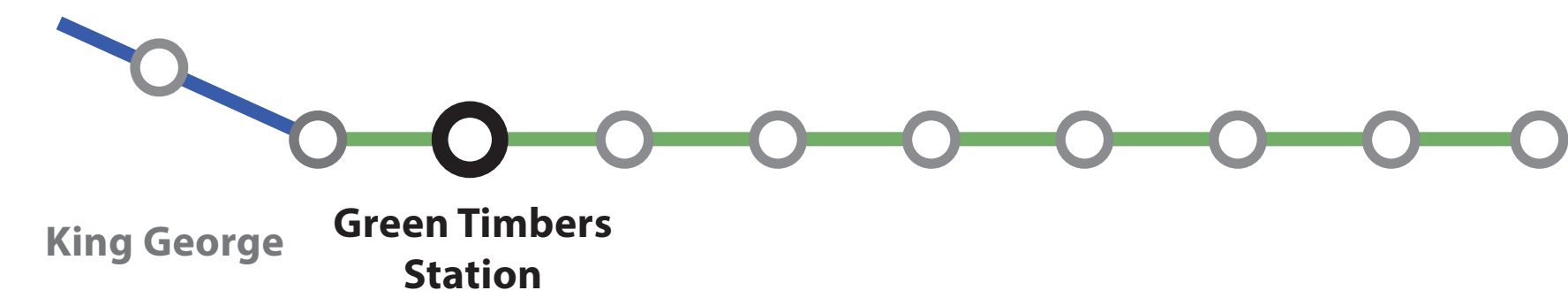
- Entrance
- Guideway
- Station
- Bike Parkade
- HandyDART
- Bus Stop/Bay
- Passenger Pick up and Drop off
- Active Transportation Path

Source: City Centre Plan 2017, amended Landuse map 2022

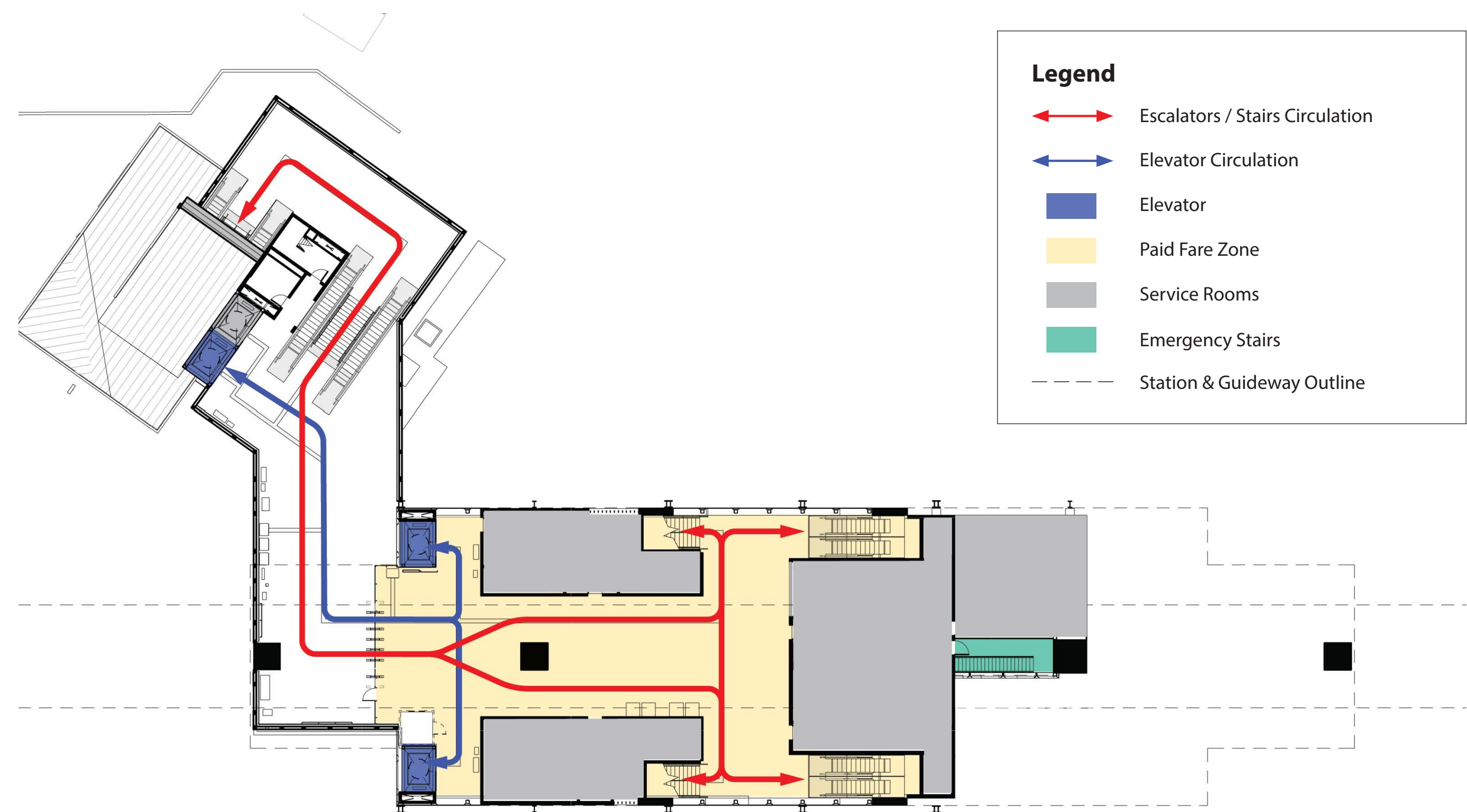
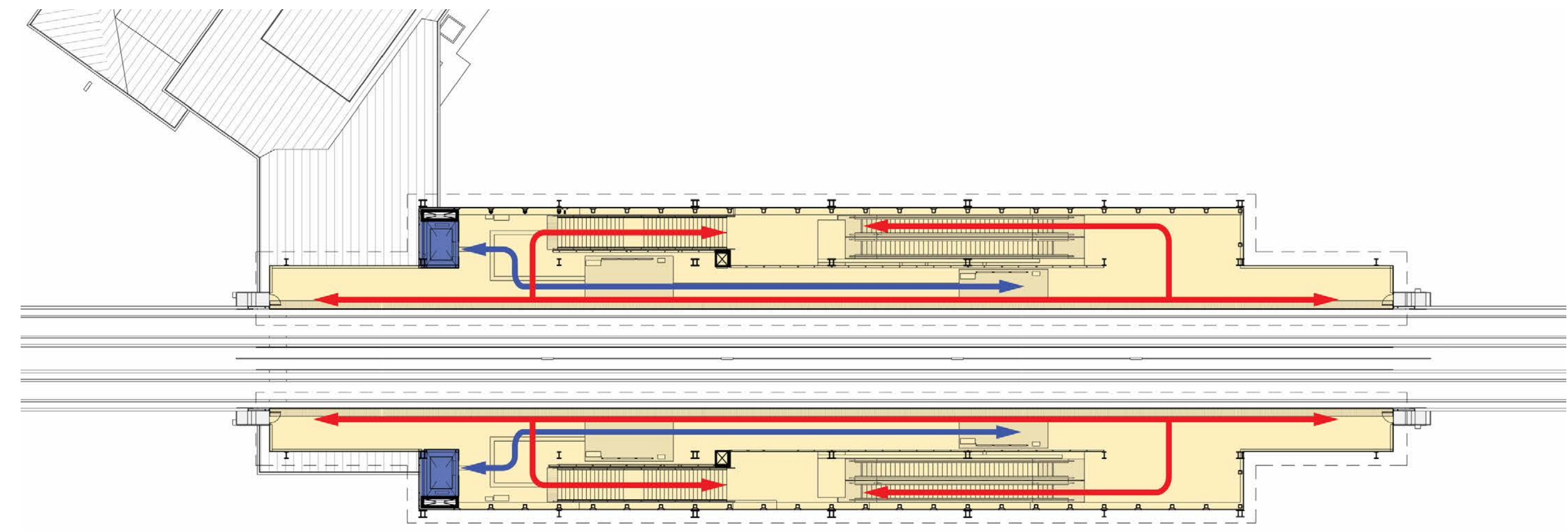


# Green Timbers Station

140 Street and Fraser Highway



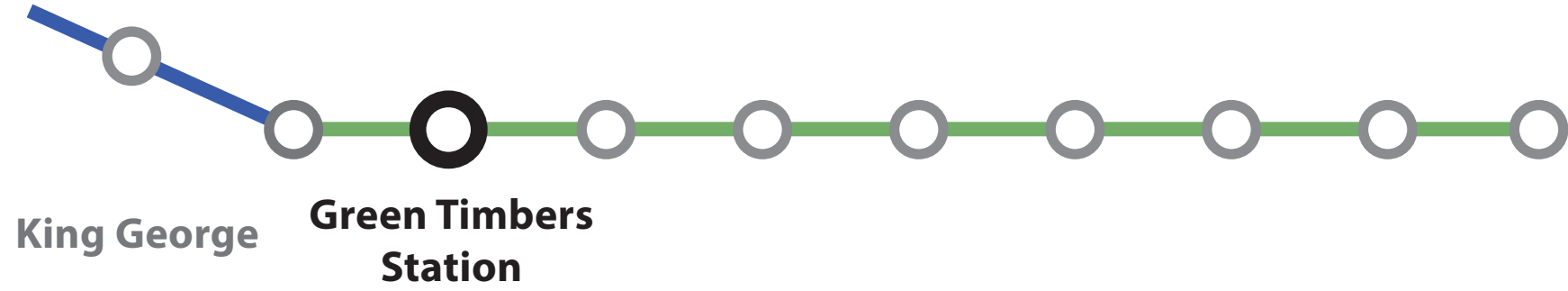
Concourse floor plan





# Green Timbers Station

140 Street and Fraser Highway



Green Timbers Station – evening rendering

Conceptual rendering, subject to change; does not reflect future transit-oriented development

