

Topic 1: Sharing Your Vision



Teaching and learning

Rights-based

Trust

Children, youth, and family centered

Early intervention

Relationships

Building capacity

Holistic

Appropriate resourcing

Evidence-based

Topic 1: Sharing Your Vision

Cultural safety

Respect for community values

Trauma-informed

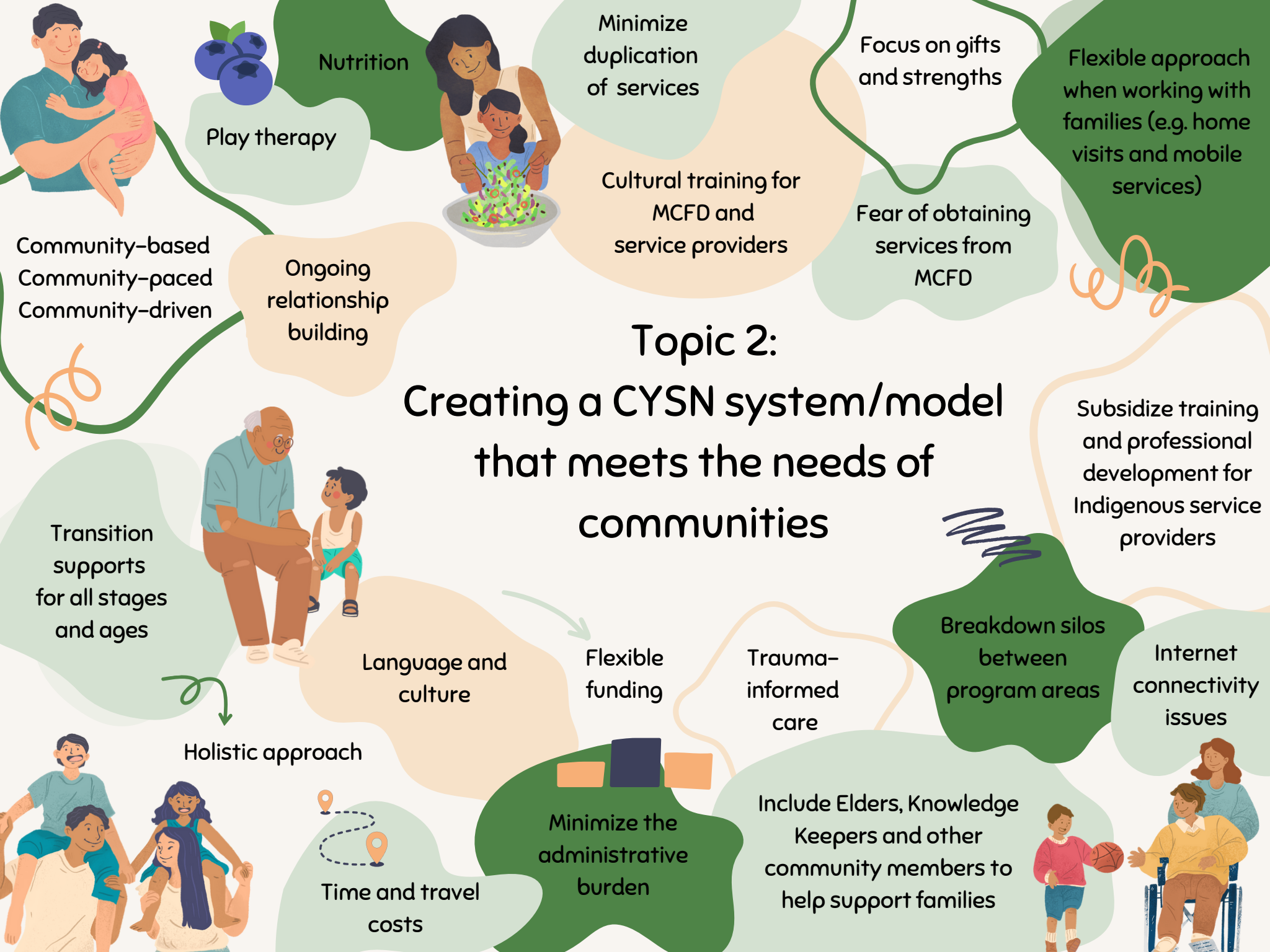
Cooperation and community input

Flexible

Accessible

Empowering communities
(Indigenous-led and community-based)

Communication



Coordination between services areas, sectors, and departments

Reducing barriers to accessing services (e.g. eligibility criteria and assessments)

Services available based on needs

Streamlined assessment and diagnosis processes

Ongoing support while awaiting assessment or diagnosis

Hearing and validating the voices of families and communities

Early intervention

Improved information on available CYSN services



Topic 3:

Supporting access to services

Innovative service delivery spaces

Open and flexible when serving families



Trauma-informed and culturally-safe diagnosis and assessment practices

Indigenous-led

Accessing services when and where they're needed

Increased workforce and resourcing

Reducing diagnosis fatigue

System navigators to advocate for families

Accessing services from community-based organizations

Culturally relevant programs



Developing a network of services where families are supported along the way



Responsive to cultural differences and the idea that safety may be different for each community



Families feeling safe and comfortable to access services

Understanding relationships between MCFD and First Nations

Working together to find creative solutions for children



Repairing and rebuilding relationships with families to support effective service delivery



Cultural and community assessment of services

Inclusive services

Topic 4:

Upholding the safety, effectiveness, and quality of services

Non-judgmental environments for families

Determining effectiveness by a family's feeling of success



Cultural activities supporting community connectedness, alongside other services



Elders are supportive of programs and services

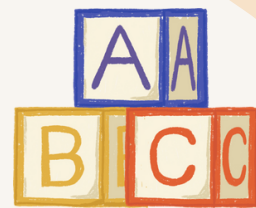


Being with families to celebrate their success

Comprehensive support for families, including prenatal support

Prevention-focused services

Program evaluation that empowers families



Ongoing engagement and co-development



Clear and accessible information

Distinct government-to-government relationships

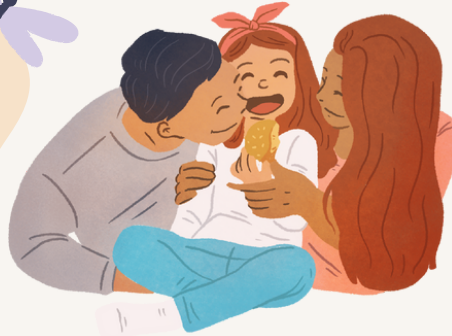
Building relationships and trust

MCFD accountability



Respecting community time and capacity

Listening to children, youth, and families



Working directly with communities

Indigenous-led program design



Topic 5: Working together to make this a reality

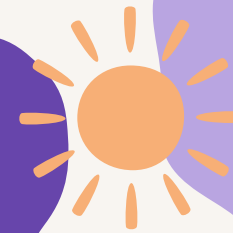


Prioritizing interim supports

An ongoing commitment to working together

Working together in a culturally safe and trauma-informed way

Responsive to the distinct needs of communities (e.g. rural, remote, and urban)



Autonomy and flexibility in service design and delivery



Cross-sector collaboration and design

Services that honour First Nations voices



Adequate, predictable and sustainable funding