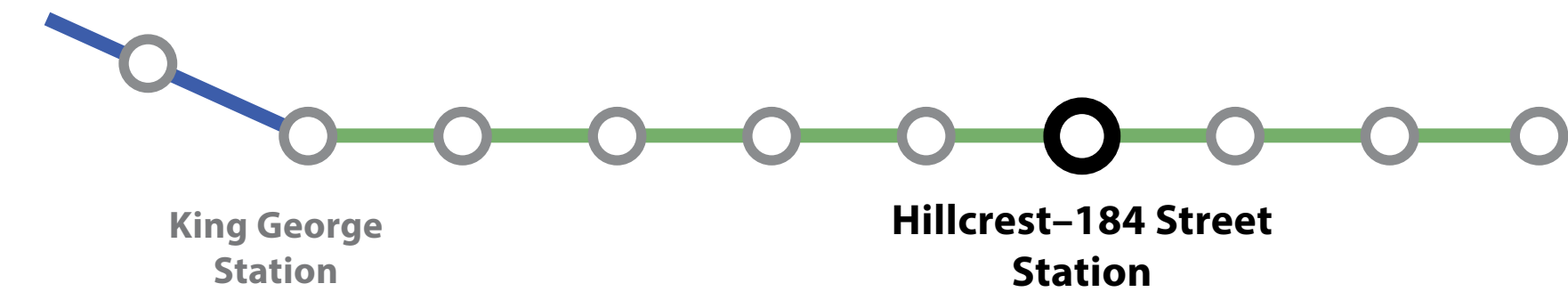


Hillcrest–184 Street Station

184 Street and Fraser Highway



Hillcrest-184 Street Station

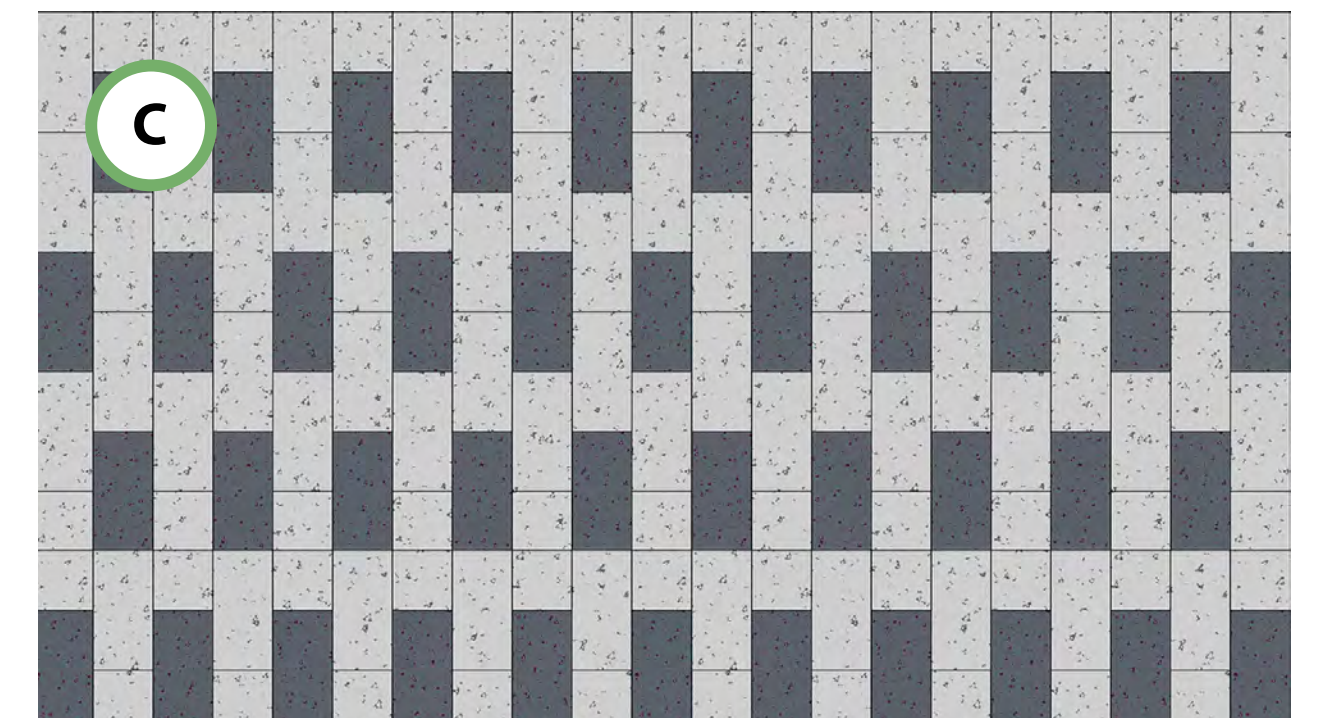
Conceptual rendering, subject to change; does not reflect future transit-oriented development



Platform enhanced with coloured glass panel



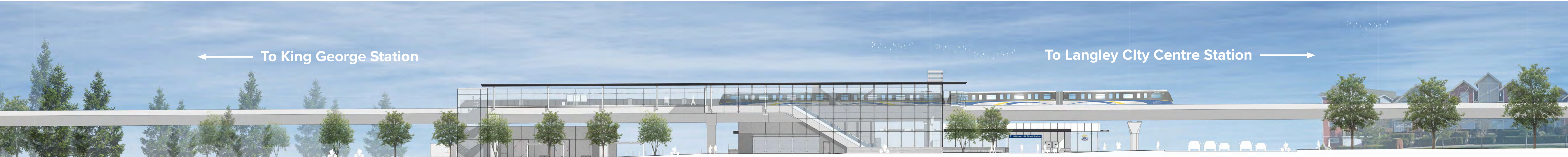
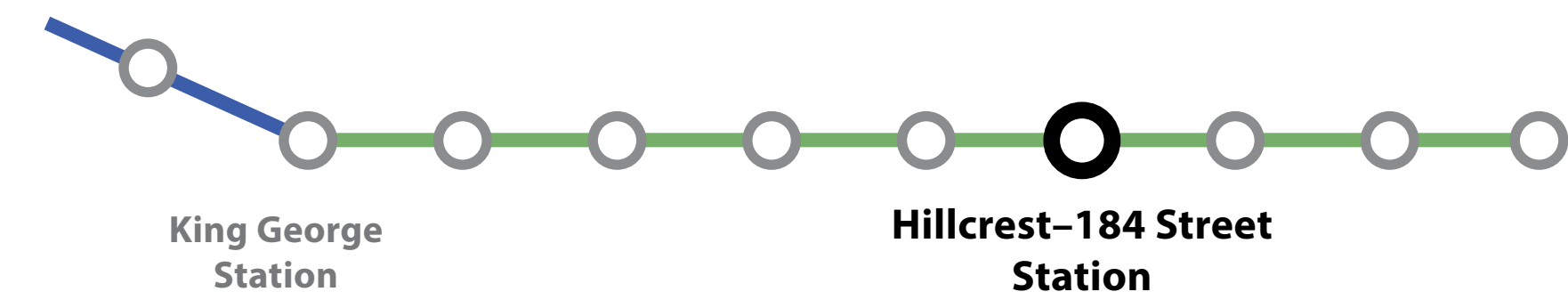
Station specific design on exterior cladding panels



Plaza paving pattern reflecting station location

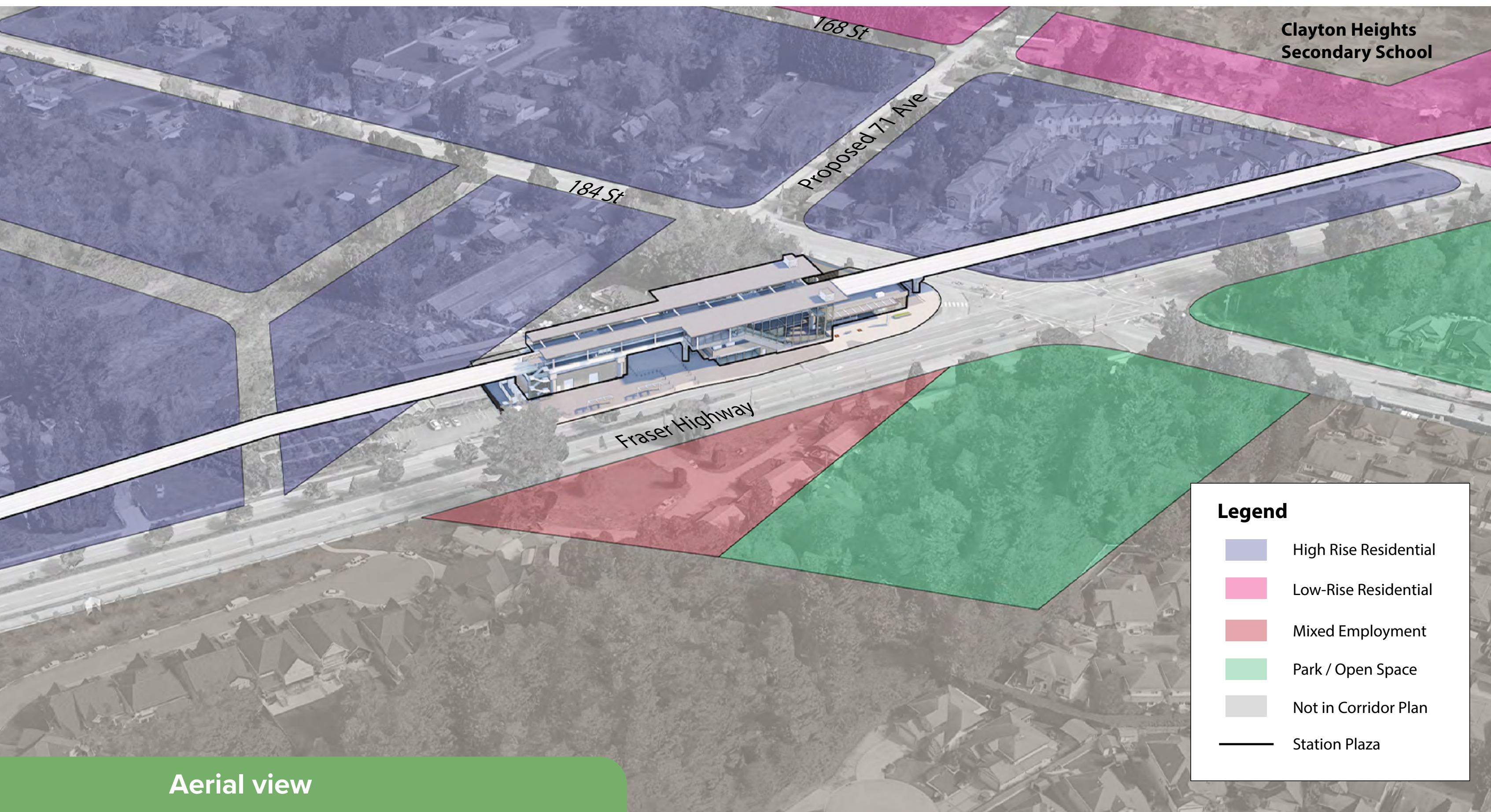
Hillcrest–184 Street Station

184 Street and Fraser Highway



South elevation streetscape

Conceptual rendering, subject to change; does not reflect future transit-oriented development



Aerial view

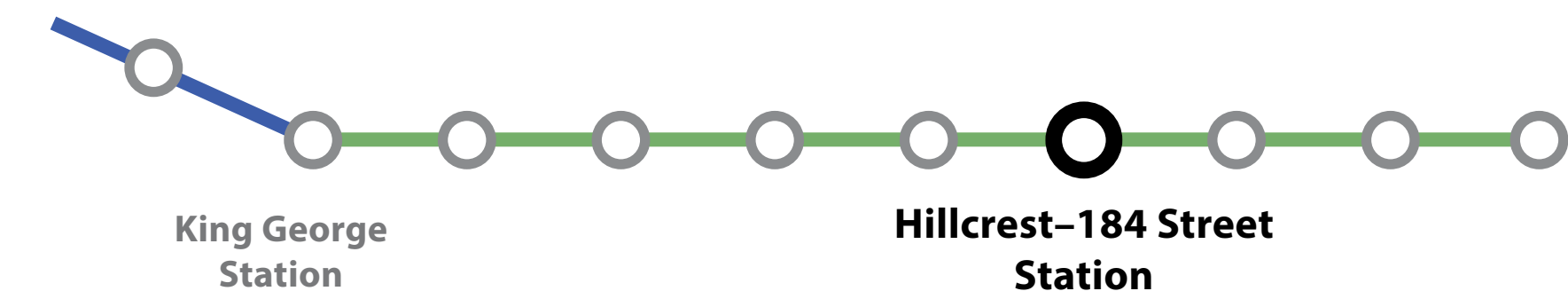
Source: Clayton Corridor Plan 2023



Site context plan

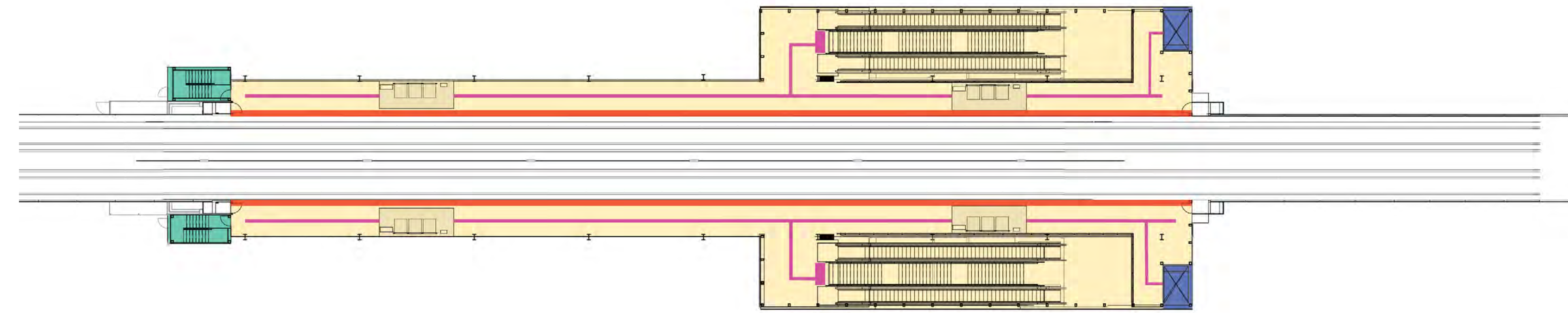
Hillcrest–184 Street Station

184 Street and Fraser Highway

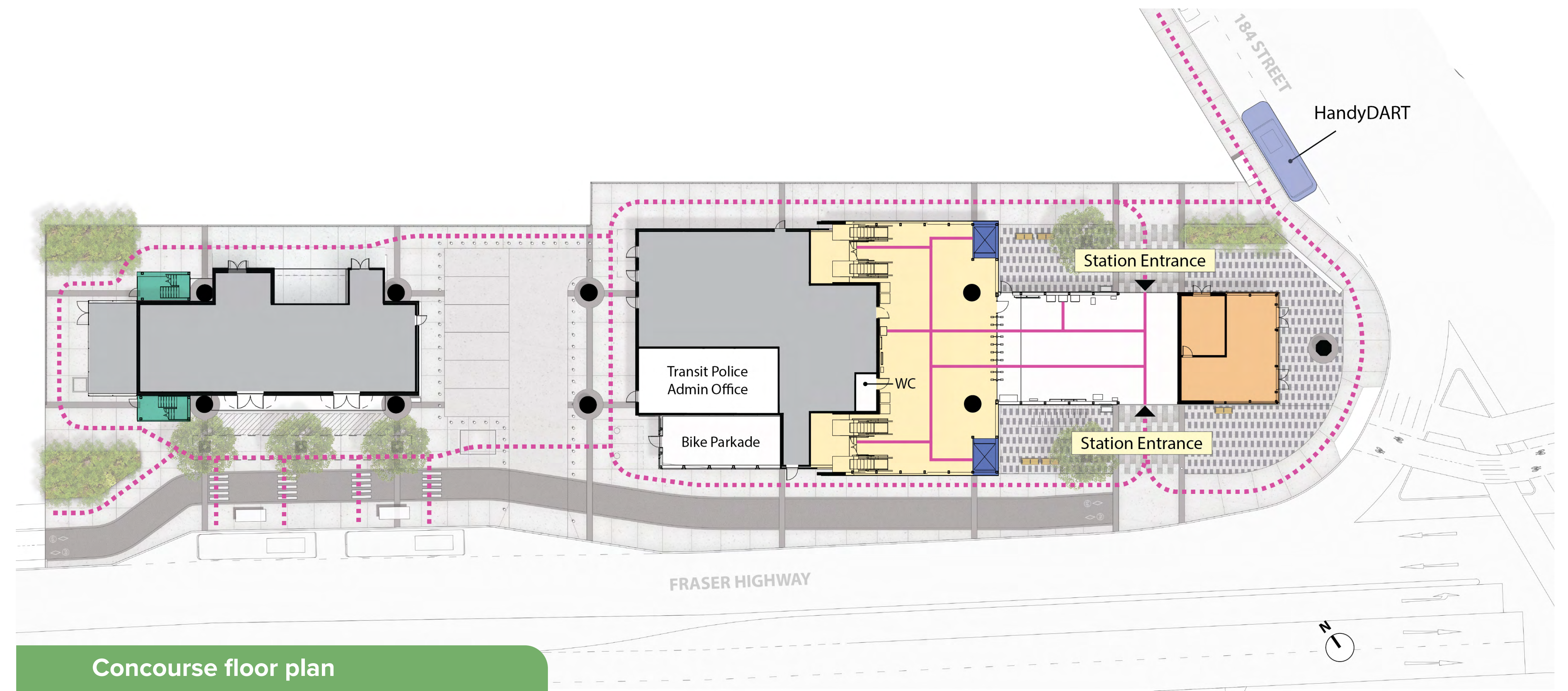


Hillcrest-184 Street Station features:

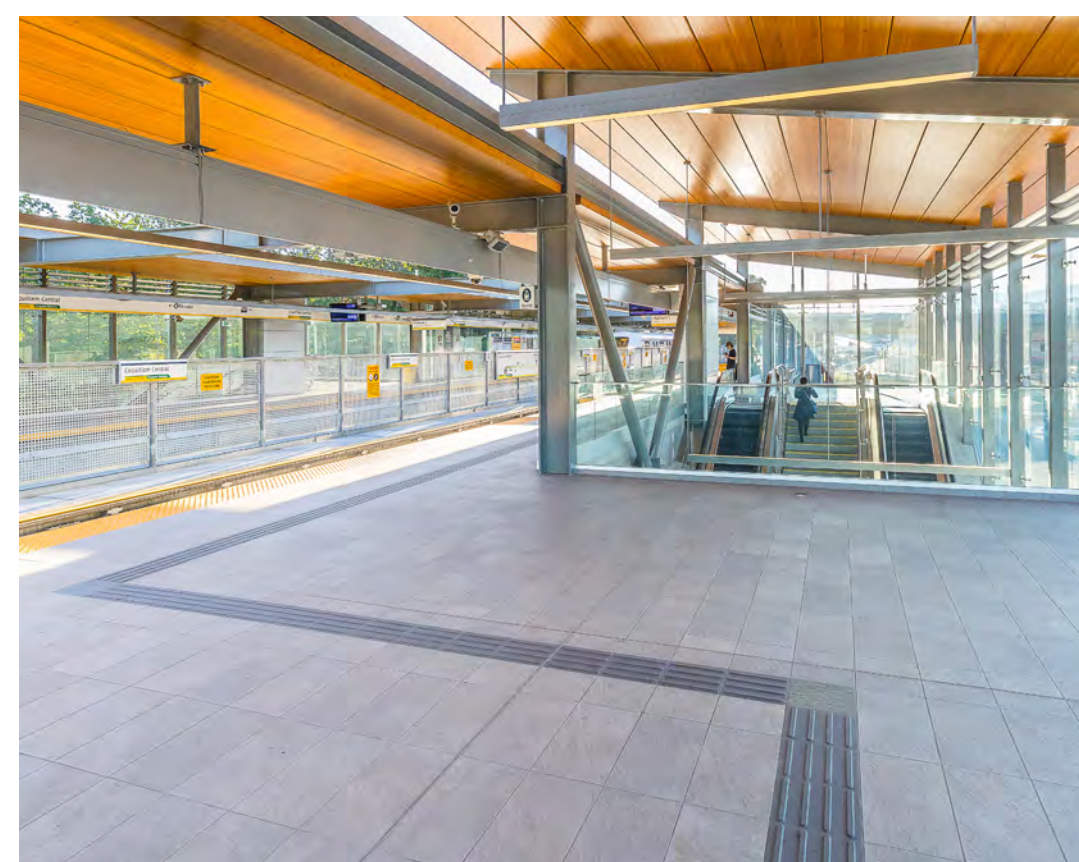
- Designated accessible pathways at the station and within the plaza
- Improved accessible wayfinding, including tactile and contrasting colour tiles
- Washroom available with the assistance of a SkyTrain attendant
- Secure enclosed bike parkade
- Transit Police administrative office



Platform floor plan



Concourse floor plan



Example of tactile wayfinding tile in contrasting colour at the platform

Legend	
	Platform Edge Tactile Warning
	Tactile Wayfinding Tile
	Accessible Path
	Elevator
	Fare Paid Zone
	Non-Public Service Rooms
	Commerical Retail Unit
	Emergency Exit Stairs