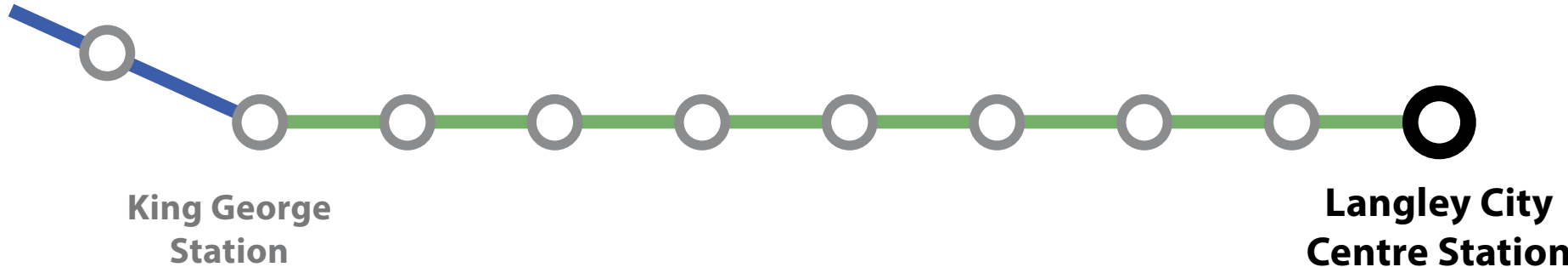


# Langley City Centre Station

203 Street and Fraser Highway



Langley City Centre Station

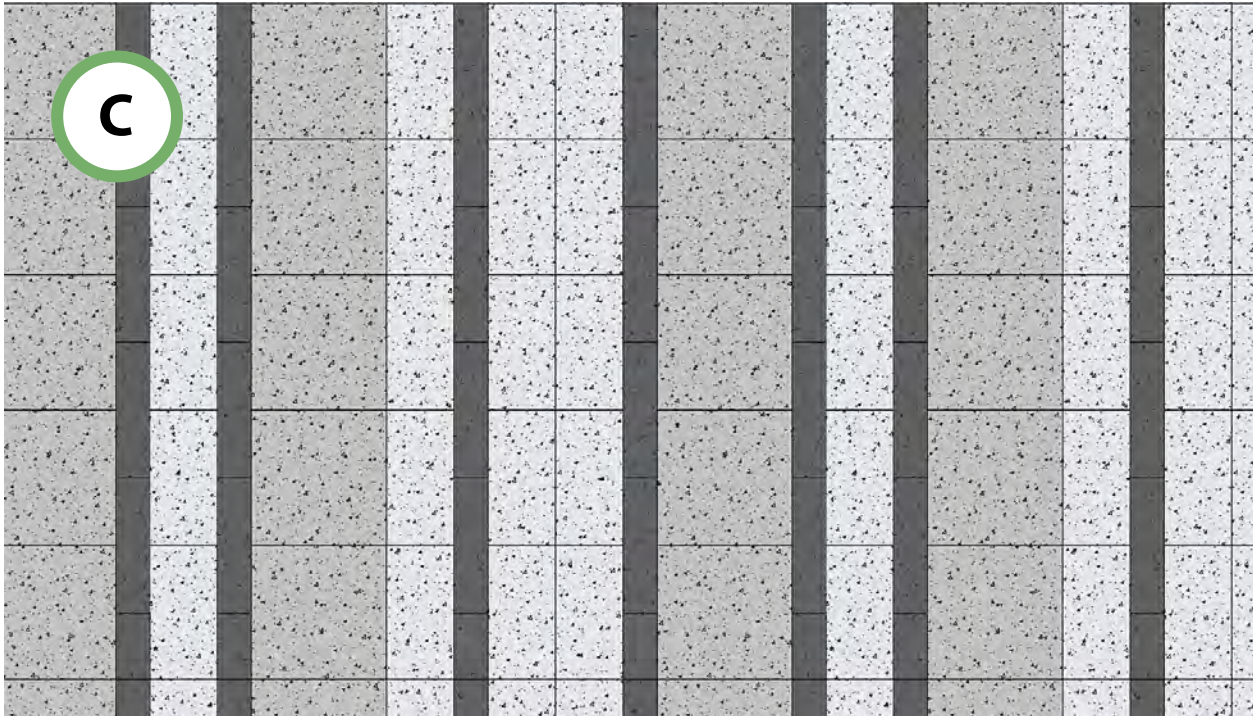
Conceptual rendering, subject to change; does not reflect future transit-oriented development



Platform enhanced with coloured glass panel



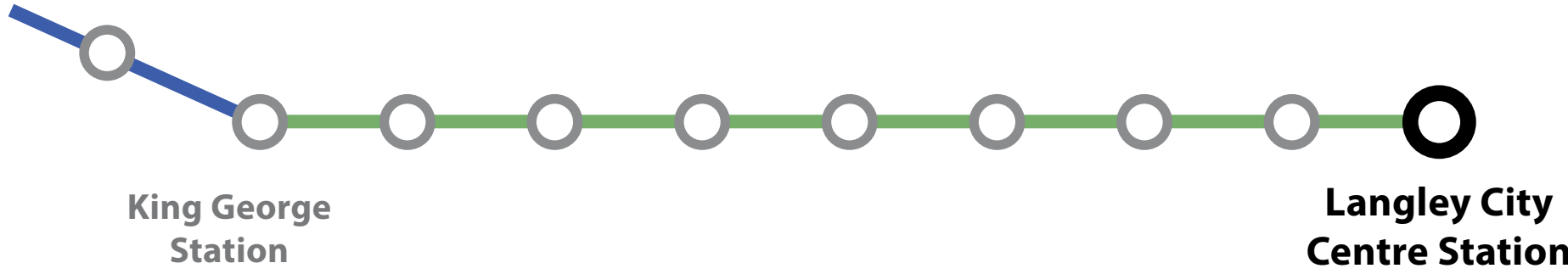
Station specific design on exterior cladding panels



Plaza paving pattern reflecting station location

# Langley City Centre Station

203 Street and Fraser Highway

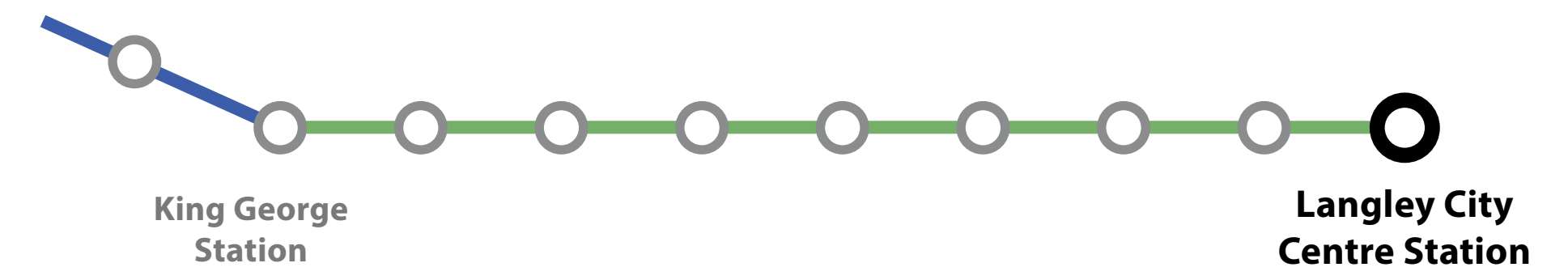


Langley City Centre Station – wall cladding pattern rendering

Conceptual rendering, subject to change; does not reflect future transit-oriented development

# Langley City Centre Station

203 Street and Fraser Highway



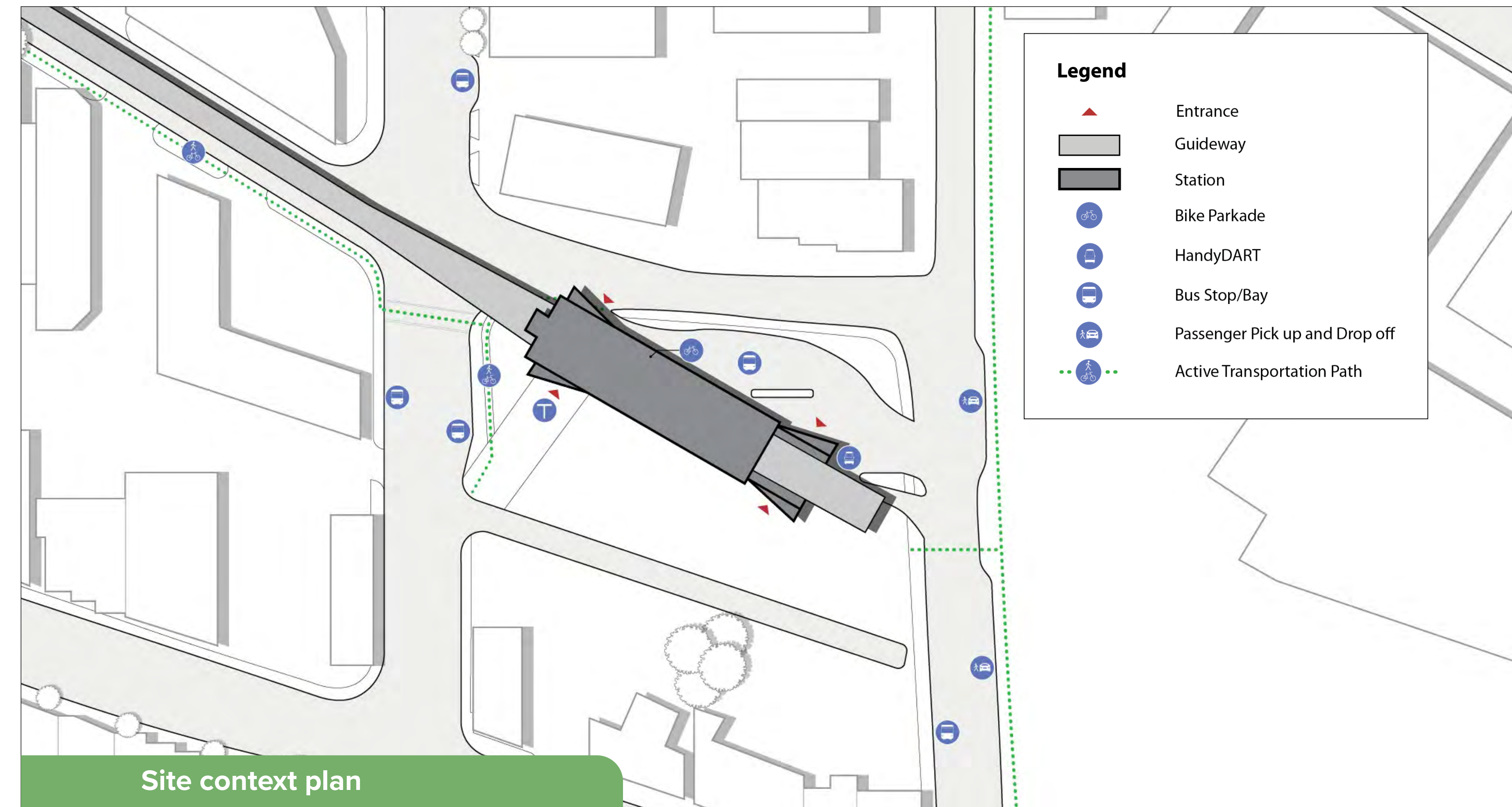
North elevation streetscape

Conceptual rendering, subject to change; does not reflect future transit-oriented development



Aerial view

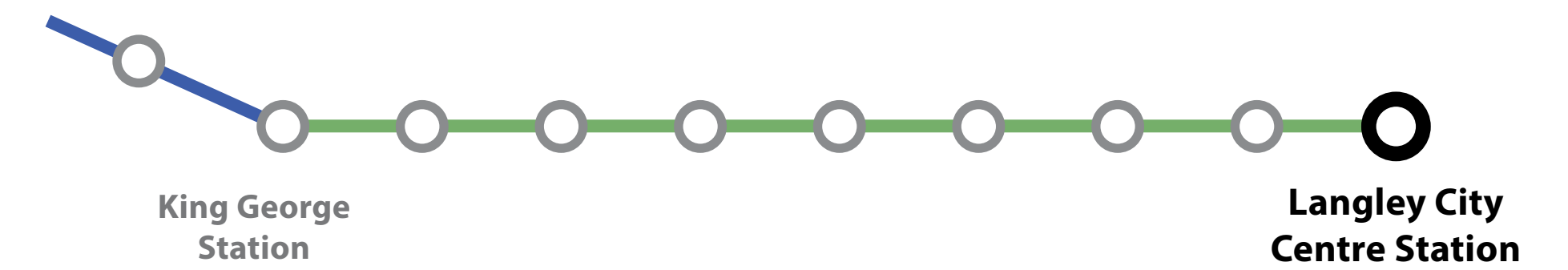
Source: City of Langley Official Community Plan 2021



Site context plan

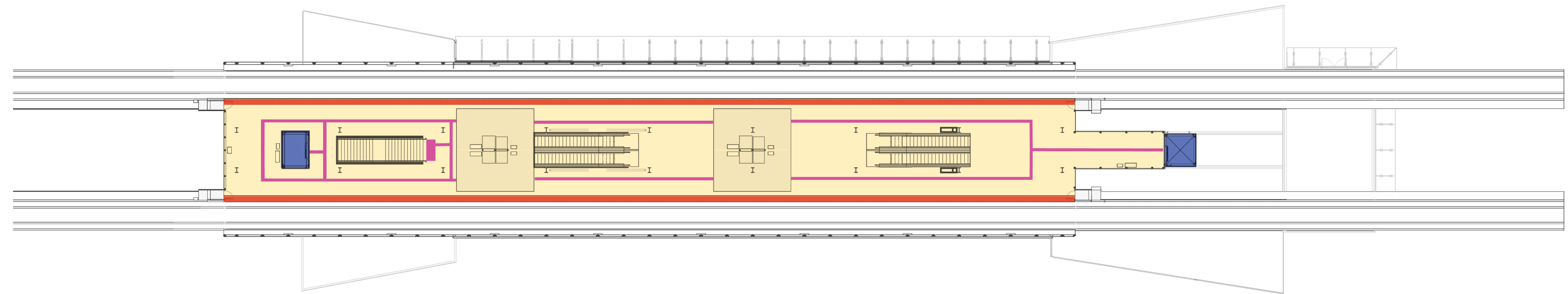
# Langley City Centre Station

203 Street and Fraser Highway

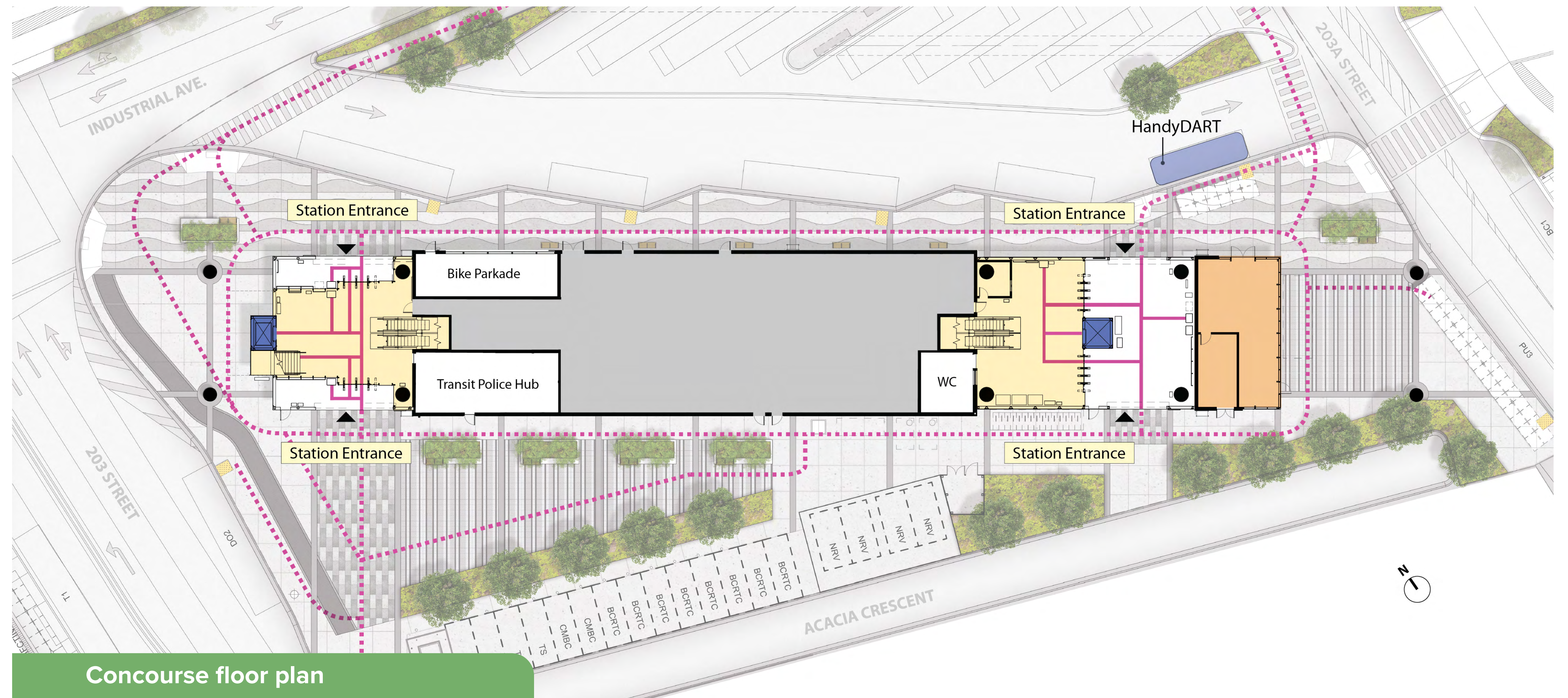


## Langley City Centre Station features:

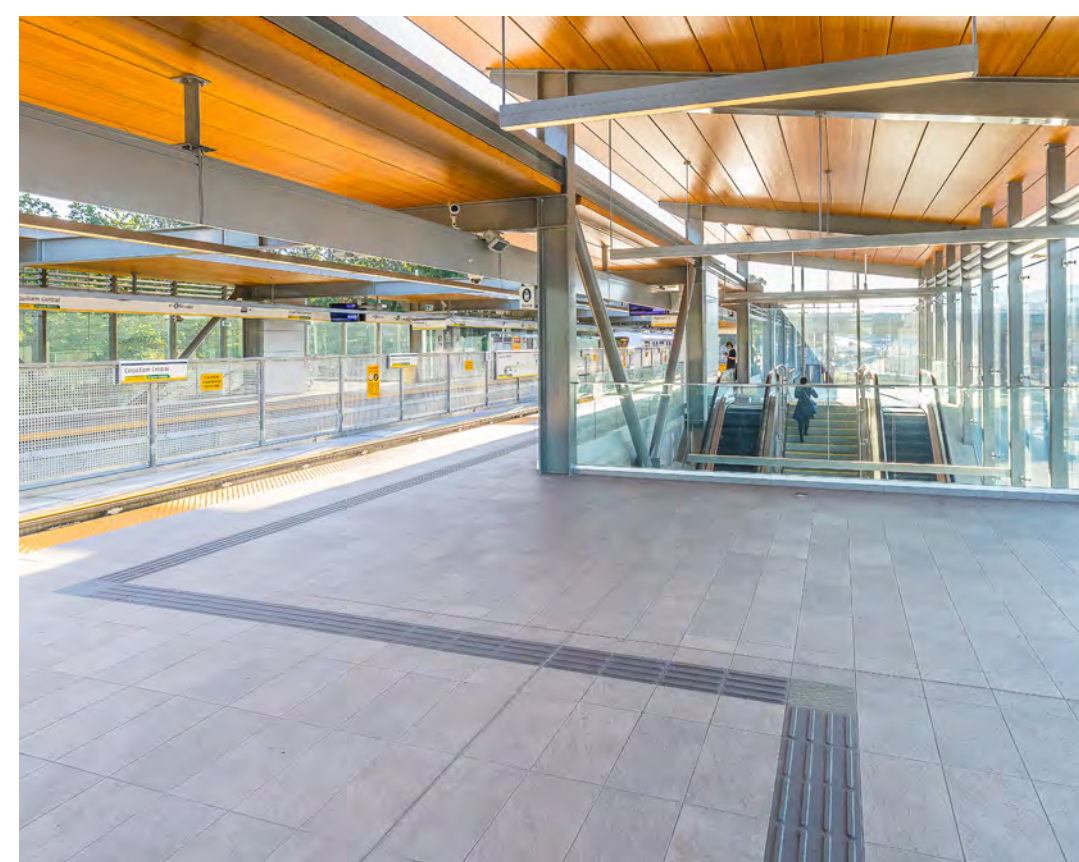
- Designated accessible pathways at the station and within the plaza
- Improved accessible wayfinding, including tactile and contrasting colour tiles
- Washroom available within the Fare Paid Zone. TransLink is exploring an open washroom at this location
- Secure enclosed bike parkade
- Transit Police Hub office, open and accessible to the public



Platform floor plan



Concourse floor plan



Example of tactile wayfinding tile in contrasting colour at the platform

