

Passenger Experience

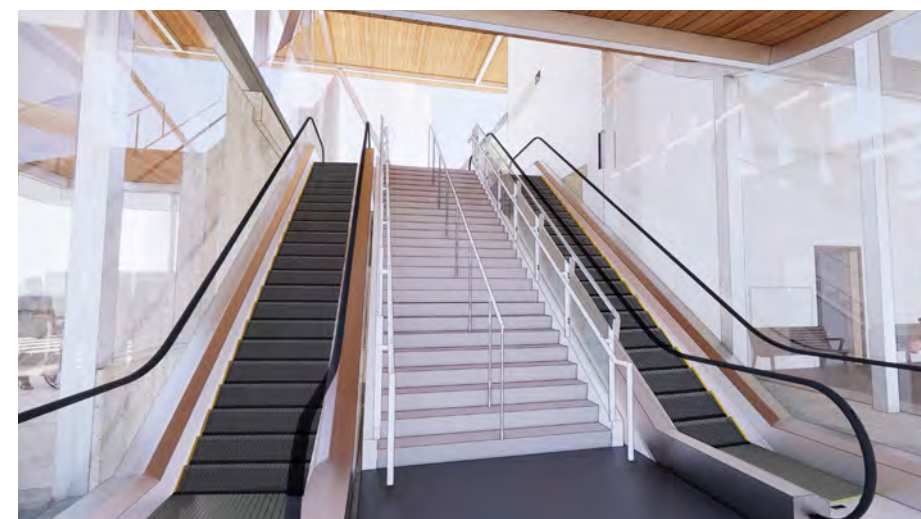
The stations include key features to enhance the passenger experience, such as:



Convenient access to buses and connections to nearby bike routes.



Safety and comfort by following *Crime Prevention through Environmental Design* principles. Transit Police offices at five stations, and parking for Transit Police at every station.



Escalators and elevators for ease of passenger movement. Specific stations designed to allow for a secondary elevator between the ground and mezzanine levels.



Simple, consistent and highly visual wayfinding.



Urban plazas with space for circulation and ease of movement.



Accessible fare gates with technology to support hands-free access for eligible customers through TransLink's Universal Fare Gates Access Program.



Designated passenger pick-up and drop-off areas.



Contrasting materials to clearly mark station entrances.



Space for commercial service/retail areas, where feasible.

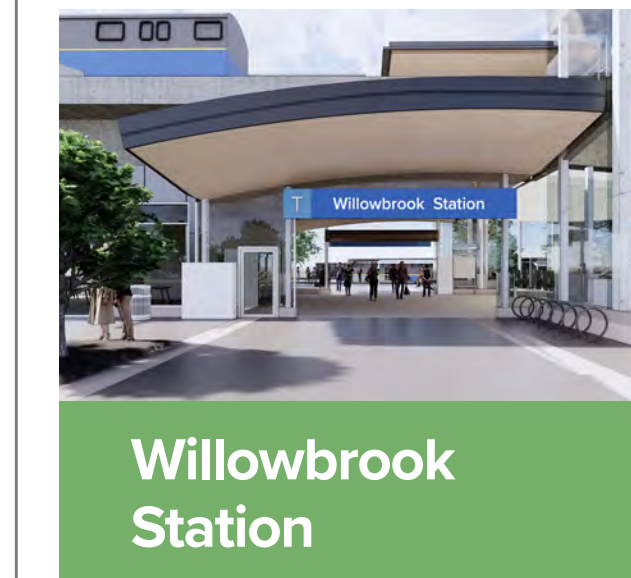
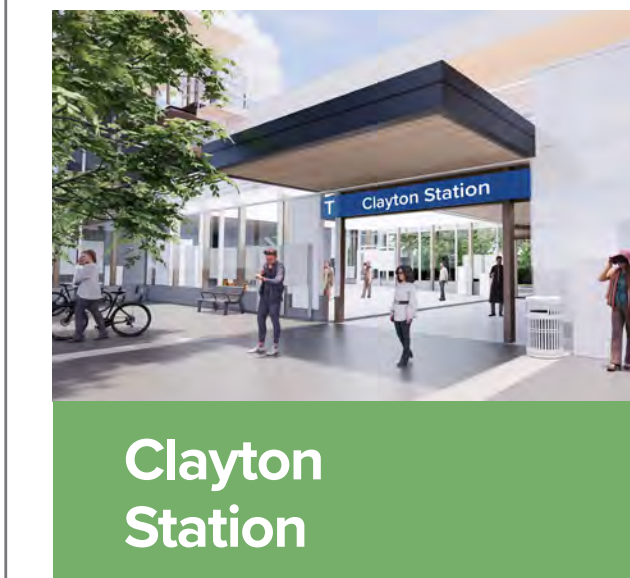


Washrooms accessible with the assistance of a SkyTrain attendant. Open washrooms are being explored at specific stations.

Making Each Station Unique

The stations are part of a cohesive design family, with distinct features to make each one unique. Design elements are carefully crafted to support a positive passenger experience, and welcoming, memorable environment. Together, these elements contribute to an enhanced urban experience, creating a sense of place for both passengers and the surrounding community:

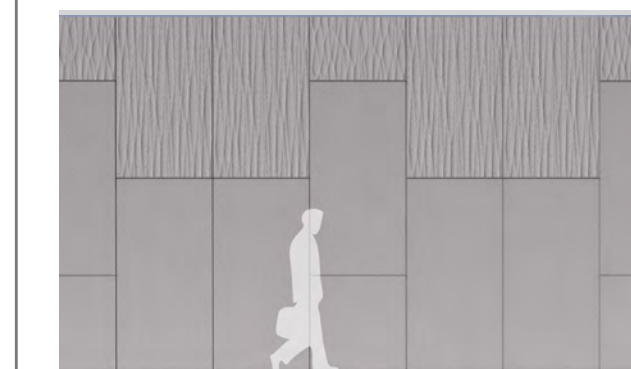
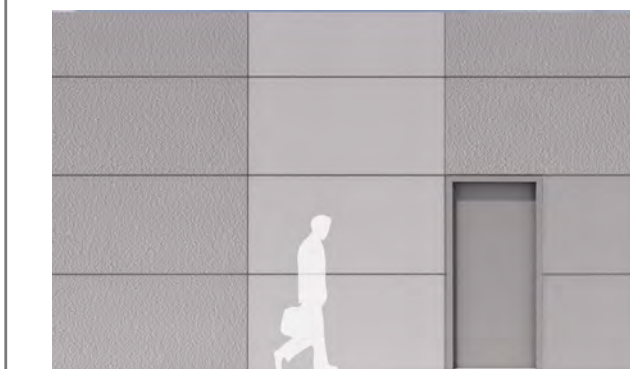
Welcoming entrance canopy geometry



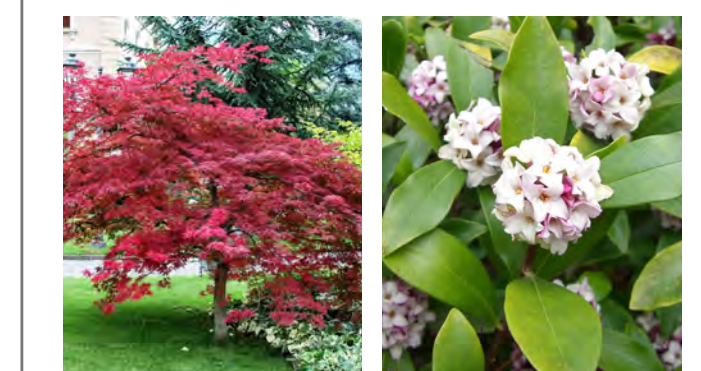
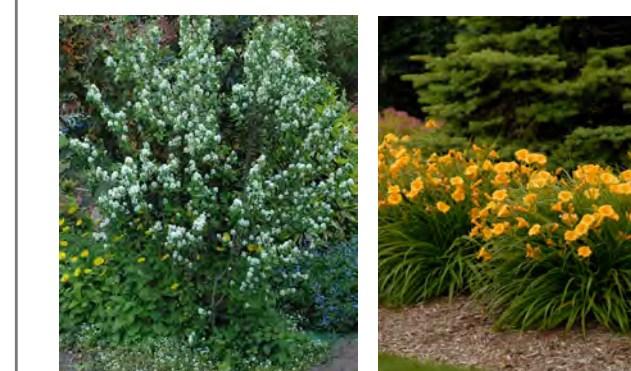
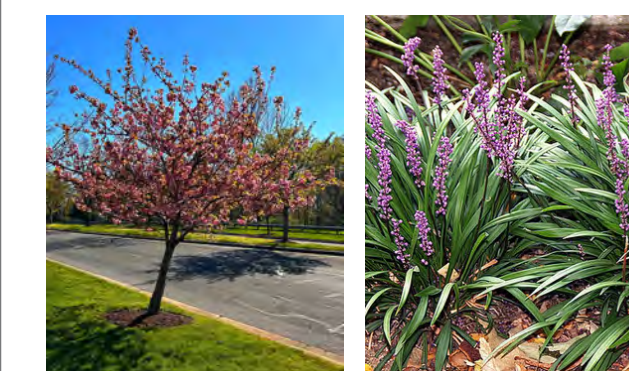
Colour reflecting station context



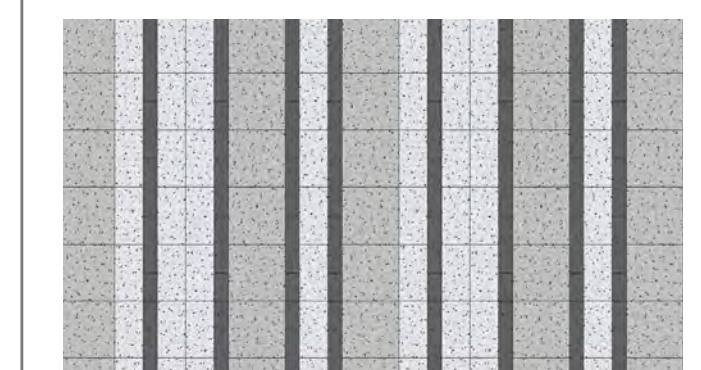
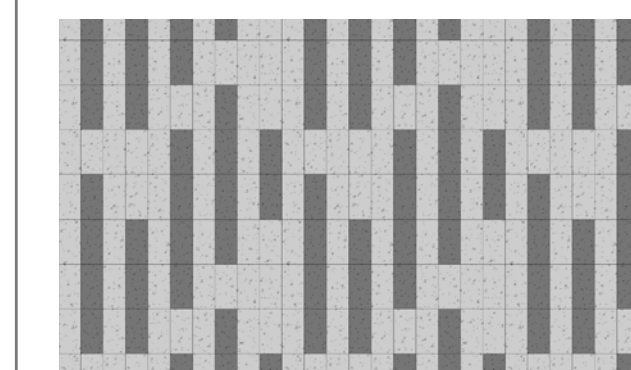
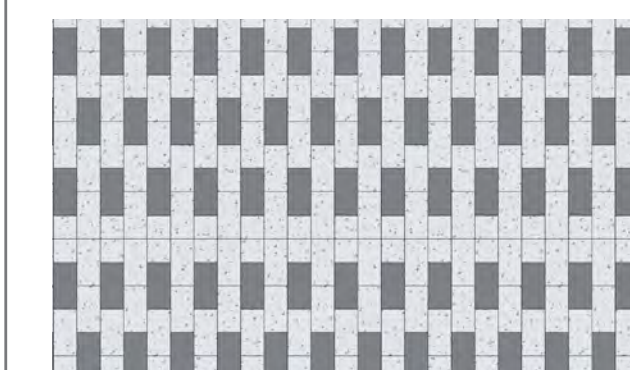
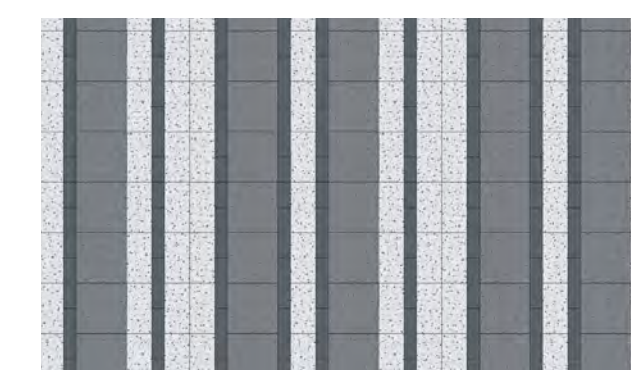
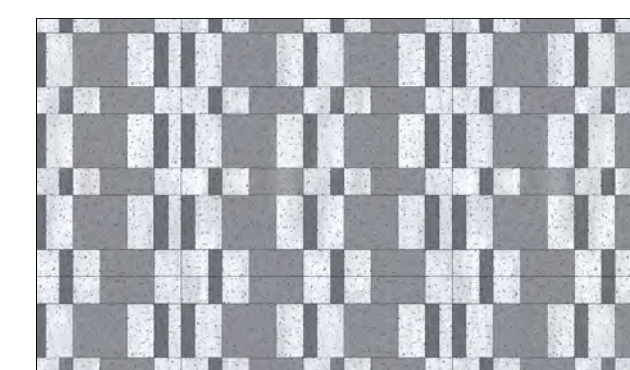
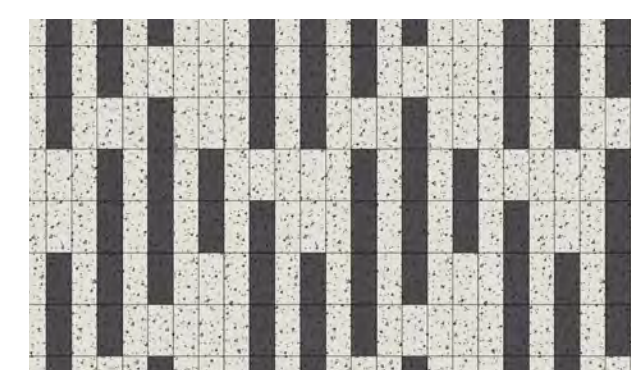
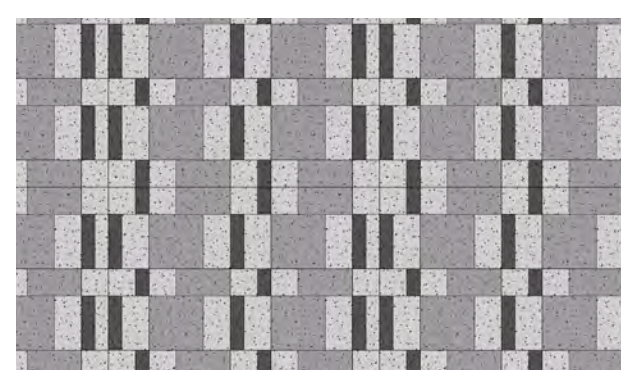
Subtle variation in exterior wall panel



Different planting palette at station plazas



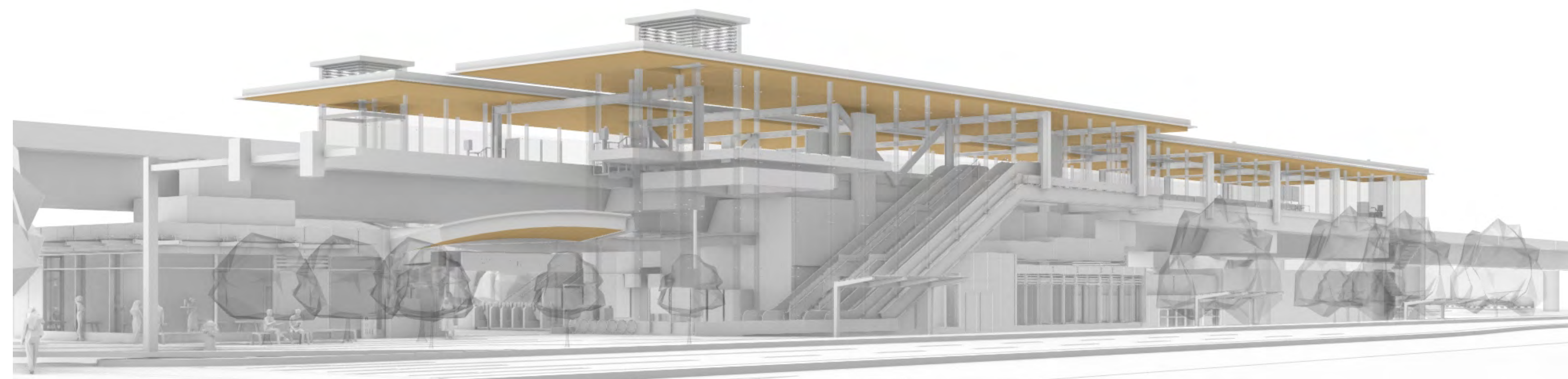
Accent paver treatment around station plazas



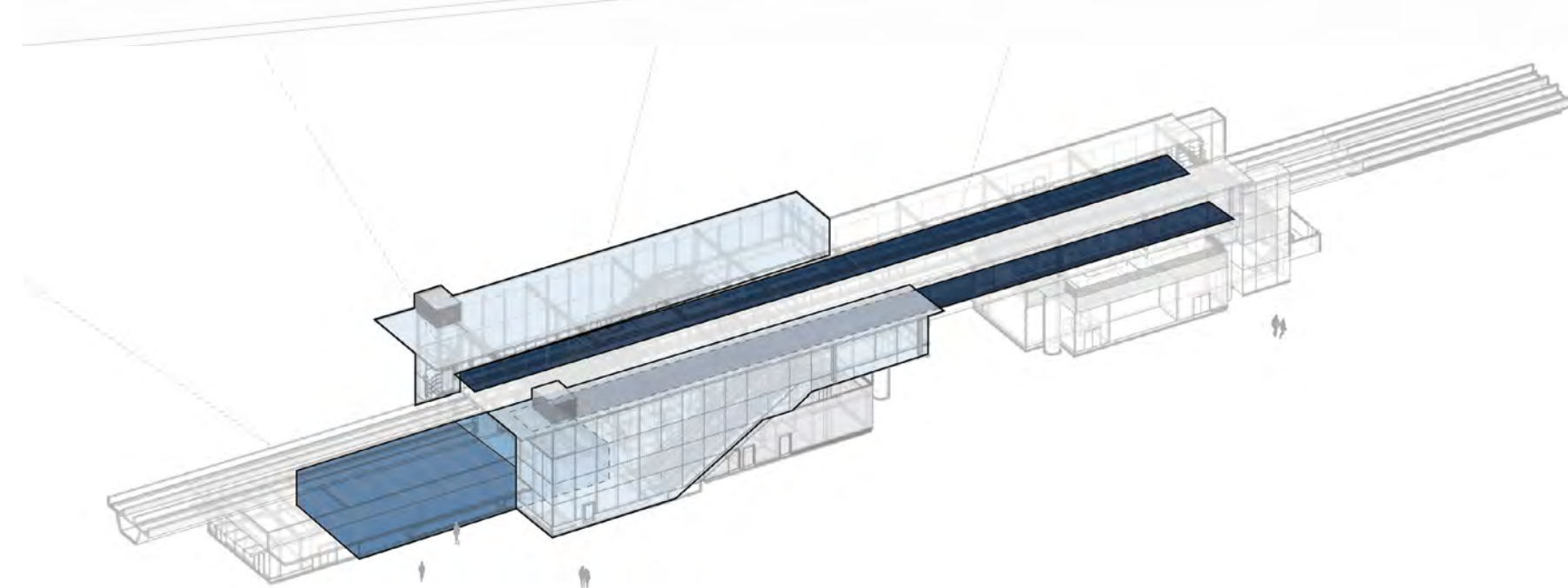
Station Design

The station designs aim to:

- Create familiarity across the SkyTrain system through simple, highly visible and unique station entrances, as well as through the use of consistent materials, finishes and space planning
- Support efficient and easy movement for passengers including access to adjacent buses and bike routes, while minimizing the stations' footprint
- Foster a positive passenger experience through effective wayfinding and other passenger conveniences



Typical station roof



Typical station organization

- STATION ENTRANCE (NON FARE PAID ZONE)
- FARE PAID ZONE
- VERTICAL CIRCULATION
- PLATFORM



Green Timbers Station



Hillcrest-184 Street Station



152 Street Station



Clayton Station



Fleetwood Station



Willowbrook Station



Bakerview-166 Street Station



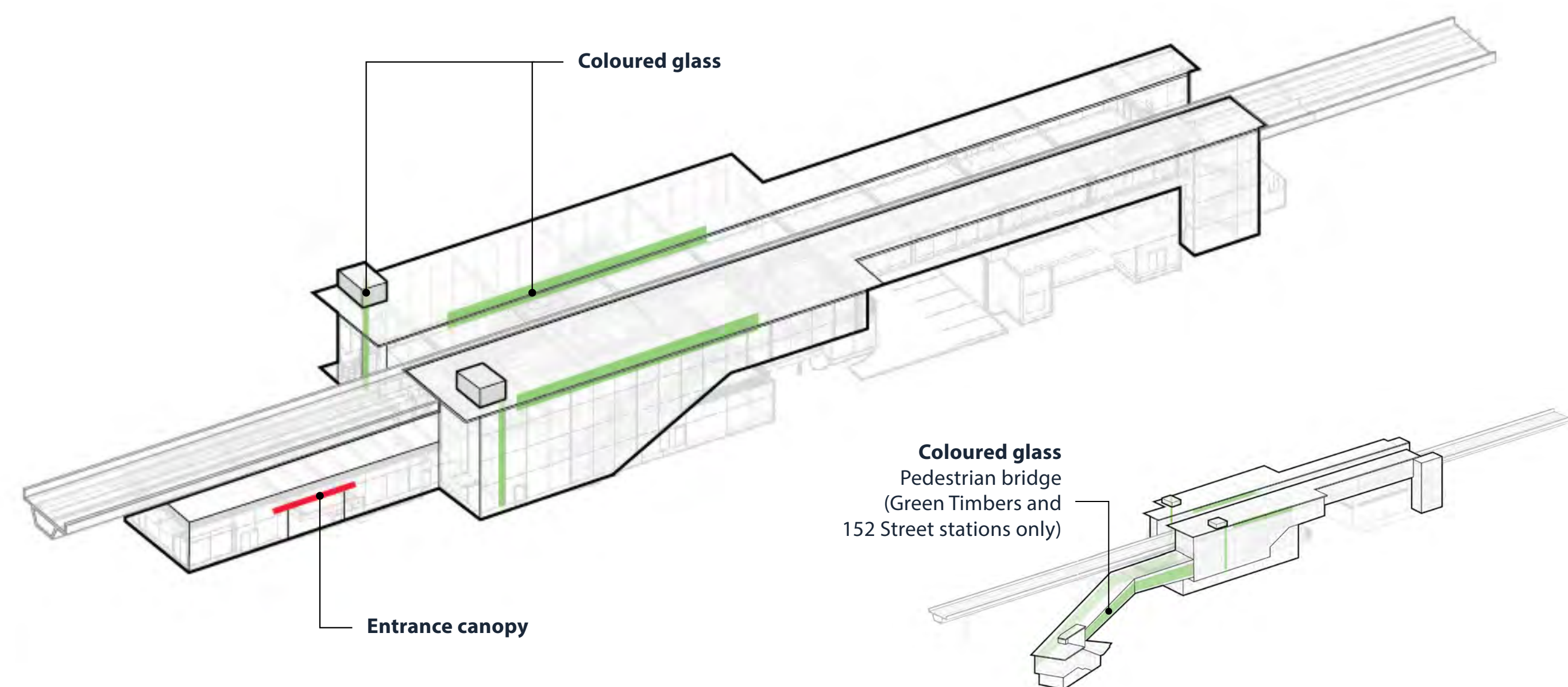
Langley City Centre Station

Station Design Enhancements

Colour adds visual interest and supports wayfinding

Each station will feature coloured glass near elevators and along the platform waiting area. The coloured glass is waist high and visible from both the train and platform to enhance the passenger arrival experience. The colour is embedded in the glass, ensuring it remains vibrant over time.

**configuration of coloured glass is subject to adjustment*



Coloured glass along the platform waiting area



Coloured glass visible from inside and outside of station



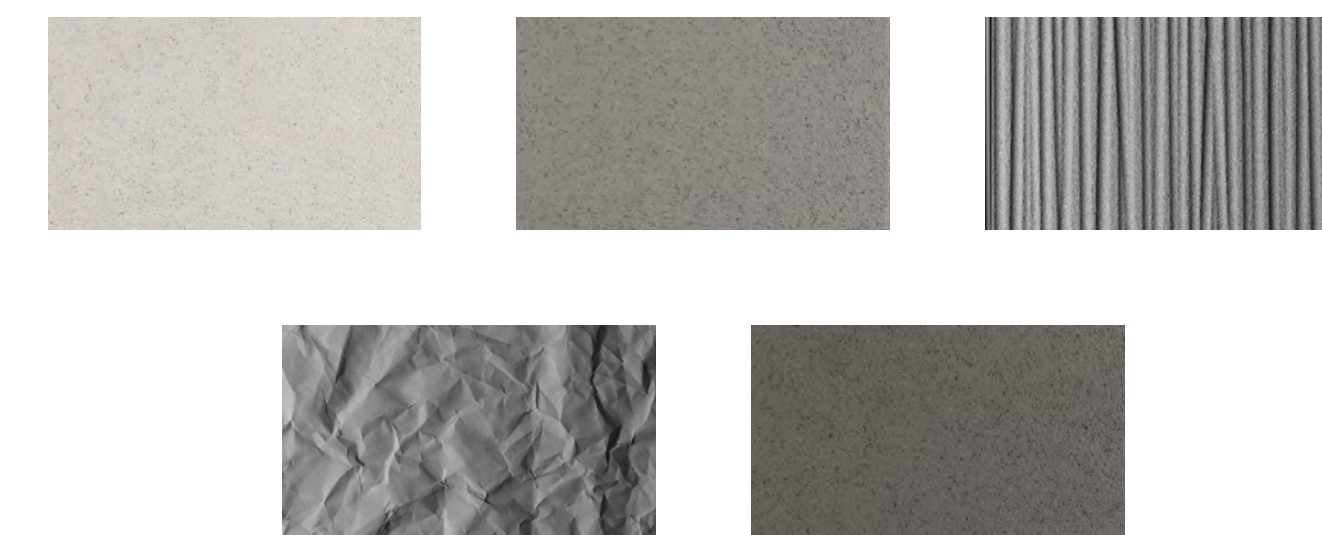
Exterior panels enhance public realm

Each station will feature unique, durable, and fire-resistant concrete panels. Panels can be customized with different sizes, layouts, shades, and textures to provide a distinct look.

The panels also have anti-graffiti properties, ensuring long-lasting quality with minimal maintenance. Panels add visual appeal for pedestrians, cyclists, and transit users, and enhance the surrounding experience without compromising safety or durability.

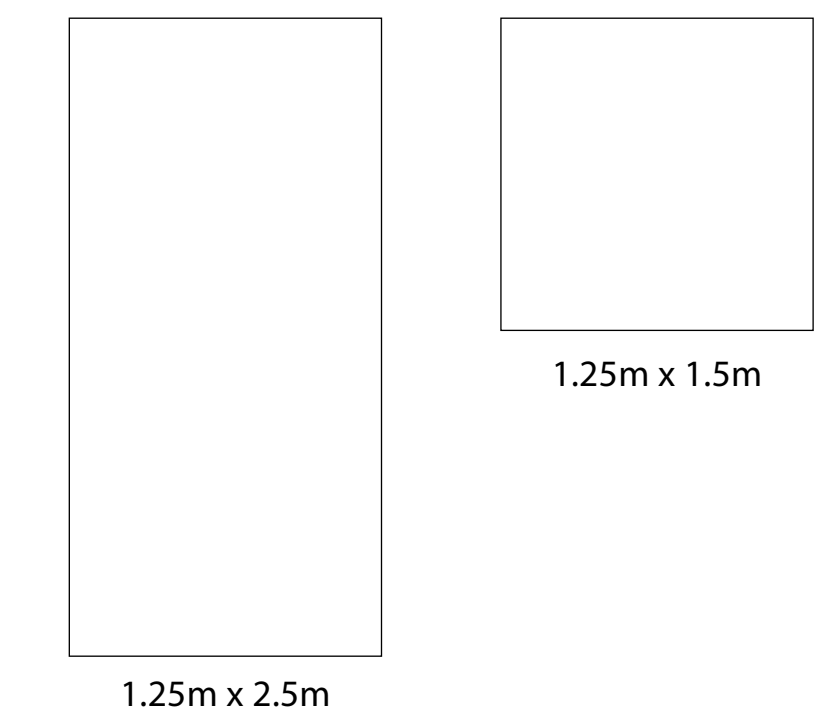
Shade and texture

Different shades of concrete, highlighted with textured panels create visual interest.



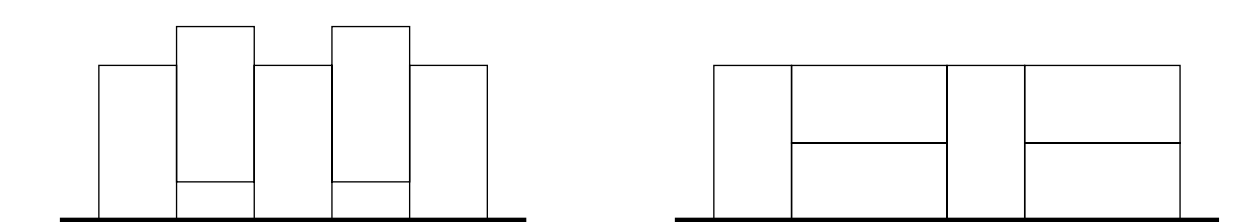
Panel sizes

Standard and large format panels reduce long-term maintenance costs and provide consistency across the SkyTrain system.



Panel configurations



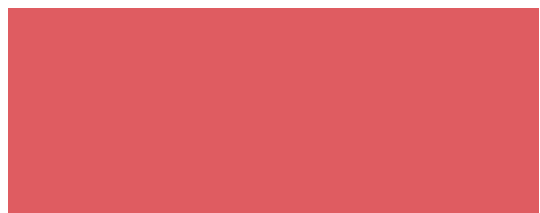
Creative layout of panels brings an extra layer of playfulness to the overall look of the station, even in the back of the house and service parking areas.








Station Design Enhancements

The use of colour will enhance the unique character of each station. Proposed colours are inspired by the local landscape, history and surroundings. Final colour selections will consider the following:

- First Nations input, values, and connections
- Accessibility needs
- Station art
- Community feedback
- Wayfinding signage

Station	Design Inspiration
Green Timbers Station 	Situated in an urban forest, Green Timbers Station is a natural candidate for green accents. This will also help soften the visual impact of the station on its surroundings.
152 Street Station 	Inspired by the pink and purple hues of cherry blossom trees at the station site, the proposed accent colour for 152 Street Station is purple.
Fleetwood Station 	Red is proposed as the accent colour for Fleetwood Station. It recognizes the neighbourhood's namesake Lance Corporal Thomas Fleetwood who, alongside thousands of Canadians, fought in WWI. The red reflects the poppy, a symbol of courage and remembrance.

Station	Design Inspiration
Bakerview-166 Street Station 	Passengers will enjoy sweeping views of Mount Baker from Bakerview-166 Street Station, as well as views of the North Shore coastal mountains. This station's accent colour will be blue, reflecting the snow and ice vistas.
Hillcrest-184 Street Station 	Hillcrest-184 Street Station is located at the crest of the hill overlooking the Serpentine River Valley, an area of significance to First Nations, as well as an important agricultural area. Golden accent colours allude to crops and honey found in the area. The golden colour also references the autumn foliage found near the station.
Clayton Station 	Clayton Station is in a residential area surrounded by parks, including North Creek Duck Pond. The station will feature blue/green accent colours, referencing the blue/green feathers of waterfowl in the area, as well as the blue/green waters of the pond and other nearby creeks.
Willowbrook Station 	Inspired by the willow tree and neighbourhood vegetation representing family, human connection and growth, Willowbrook Station's accent colour will be moss green.
Langley City Centre Station 	The BC Electric Railway stop at Langley Prairie was located one block southeast from the future station site. Images of the brightly-coloured trains, along with barns and brick storefronts in the area inspired barn red for Langley City Centre's accent colour.

Station Materials and Finishes

Several factors help to inform the selection of station materials and finishes, including durability, design precedents, maintenance, performance and safety.

The station designs will:

- Maximize glazed areas to provide abundant natural light into the stations
- Use materials that are standard in sizes and palettes
- Incorporate anti-graffiti coatings on walls in public areas, or products with integrated anti-graffiti properties
- Use sustainable materials where appropriate, such as cross-laminated timber and nail-laminated timber for platform roofs and entrance canopies

Design precedents:



Burquitlam Station



Coquitlam Central Station



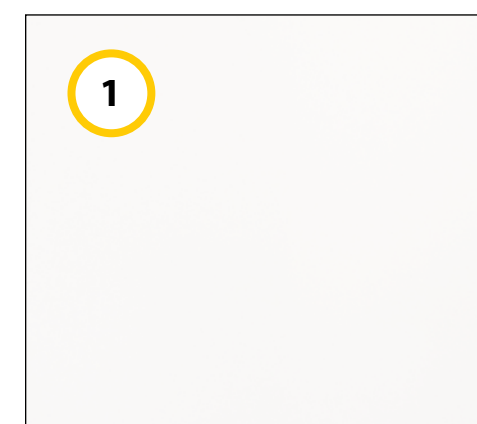
Moody Centre Station



Exterior render



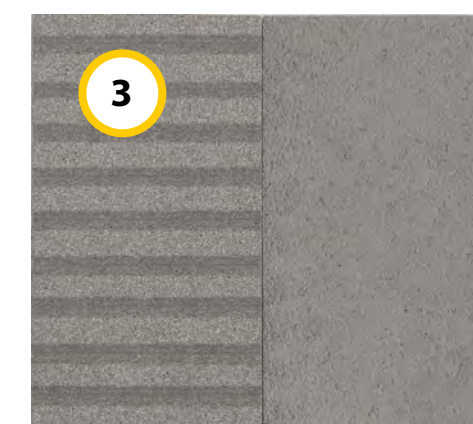
Interior render



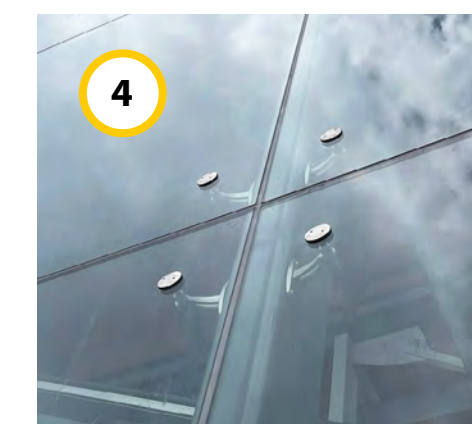
Metal panel



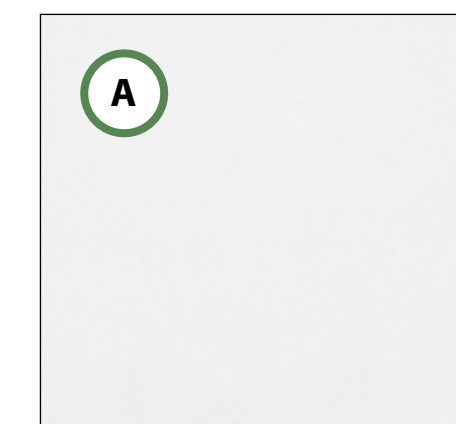
Heavy timber



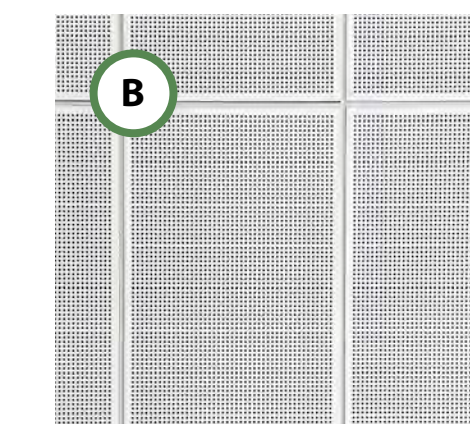
Stone or concrete panel



Spider clip & laminated glazing



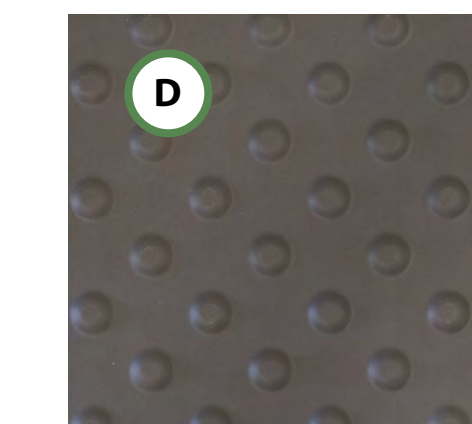
Glazed porcelain wall tile



Perforated metal ceiling panel



Heavy timber

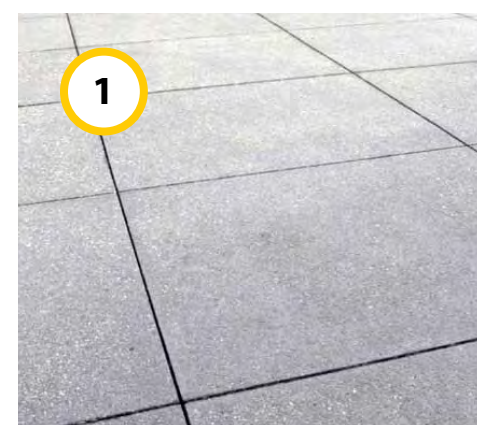


Wayfinding tile



Slip-resistant porcelain tile

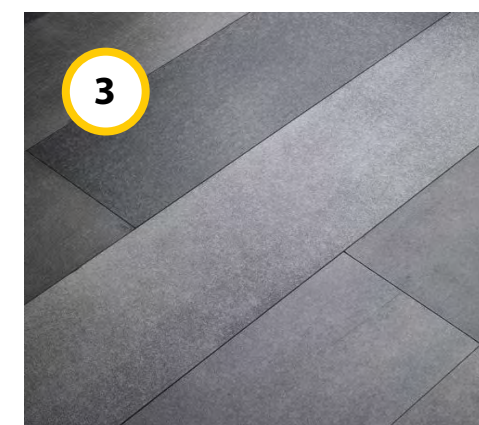
Site Materials and Finishes



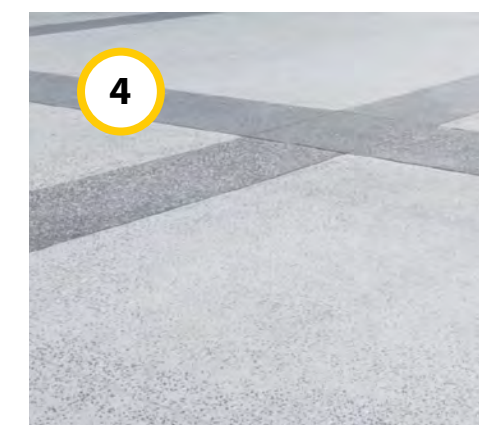
1
Cast-in-place concrete pavement



2
Unit paver



3
Decorative concrete pavement



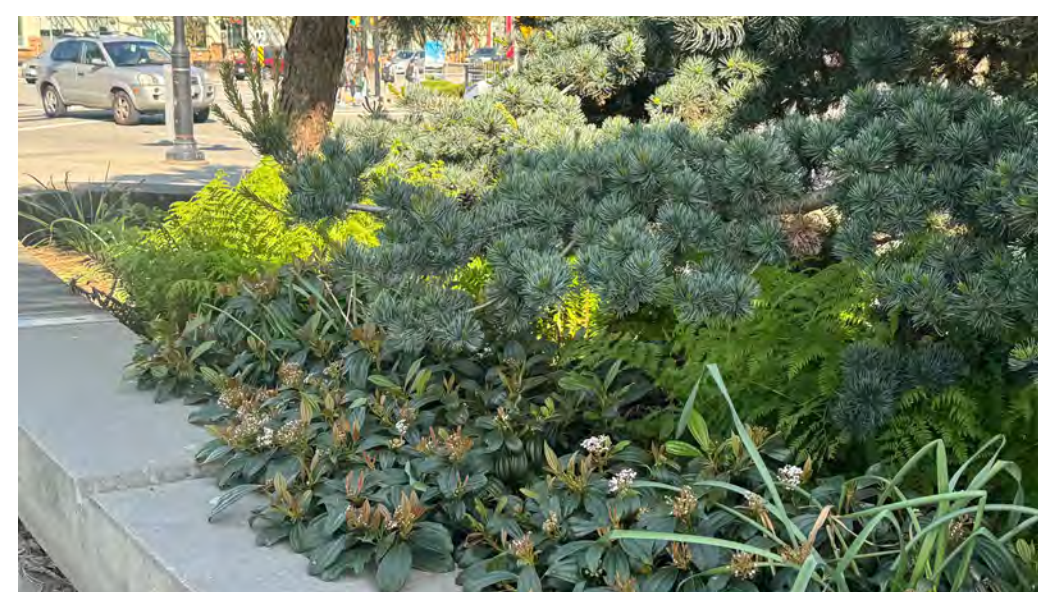
4
Exposed aggregate concrete bands

Distinctive pavement designs improve wayfinding and foster a stronger sense of neighbourhood identity.

Different pavement materials are used for the various plaza circulation paths to create a visual distinction that enhances safety.

Landscaping is designed to provide a diverse planting palette with seasonal interest. Native, drought tolerant species are prioritized, with a high efficiency drip irrigation system to minimize water consumption.

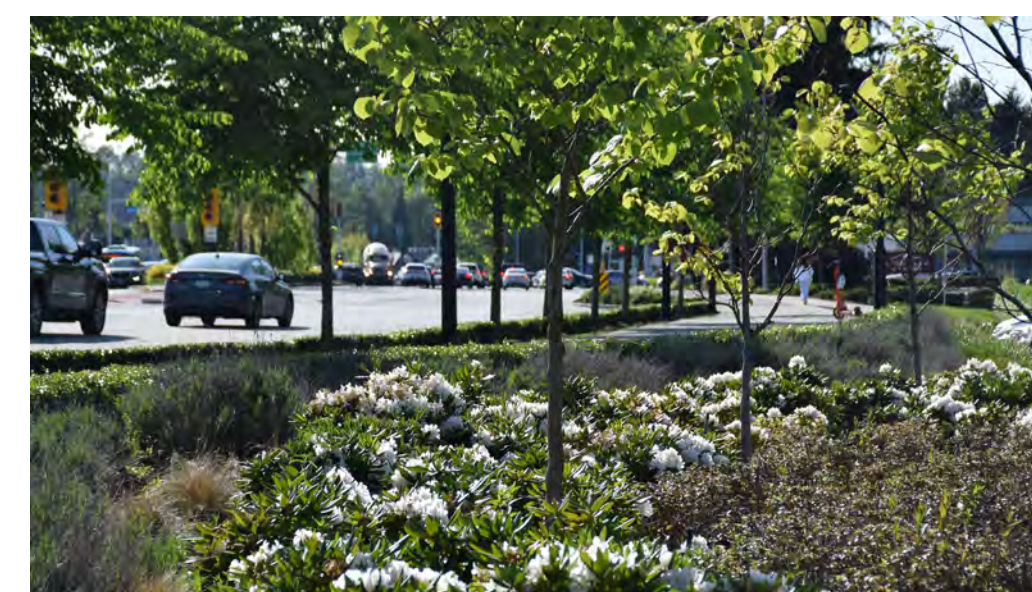
Precedents



Diverse planting palette



Urban canopy



Seasonal interest in plantings



Combination of pavement finishes defines use

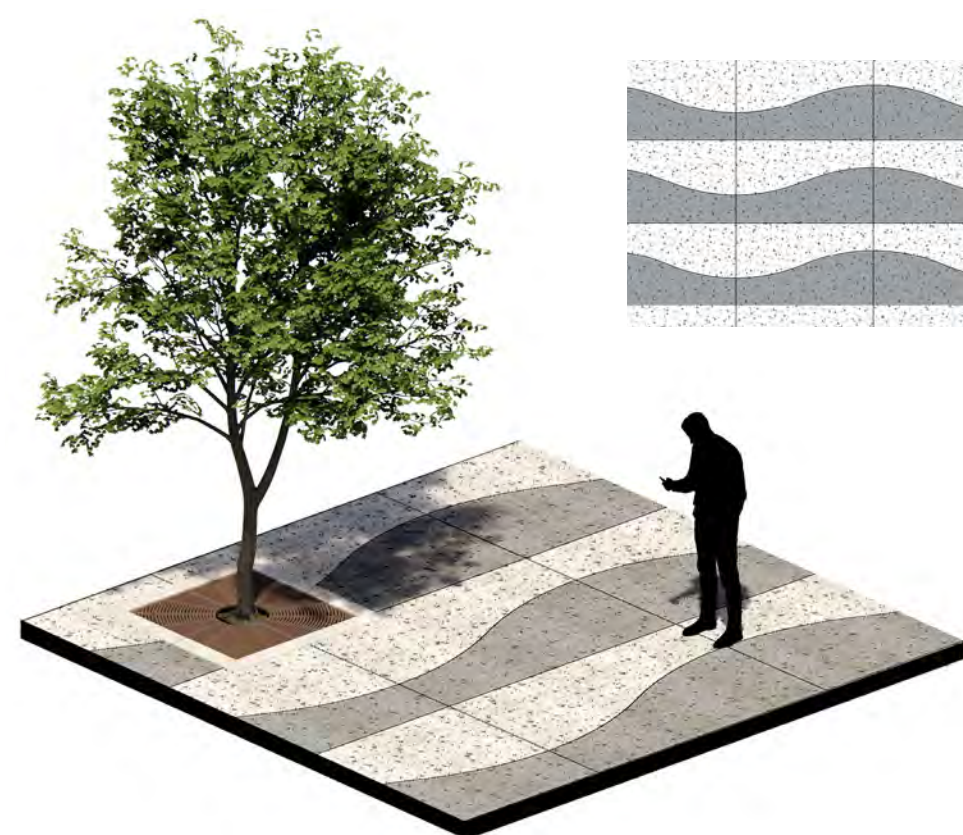
Site Materials and Finishes

Distinct paving patterns at key station plaza locations enhance station identity and contribute to place-making, with variations in pattern and colour reflecting the station's architecture, function and context. Consistent decorative paving treatments at main entrances and circulation areas provide clear wayfinding across the system.

System-wide paving treatments



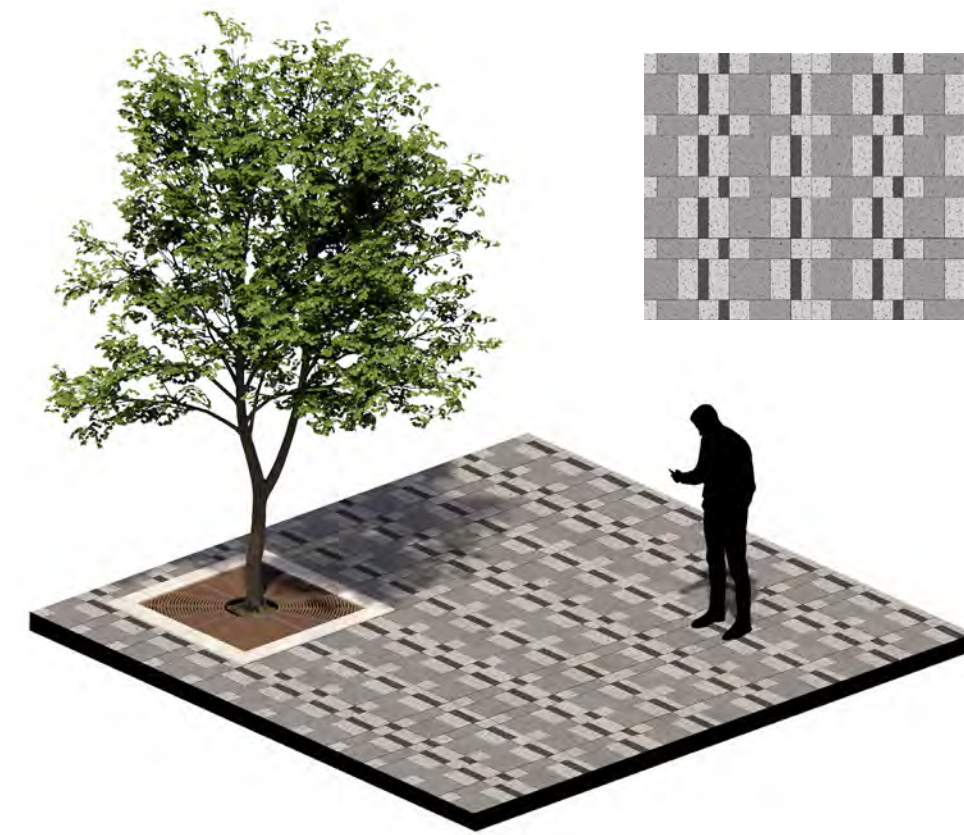
Directional accent pavement at main entrances



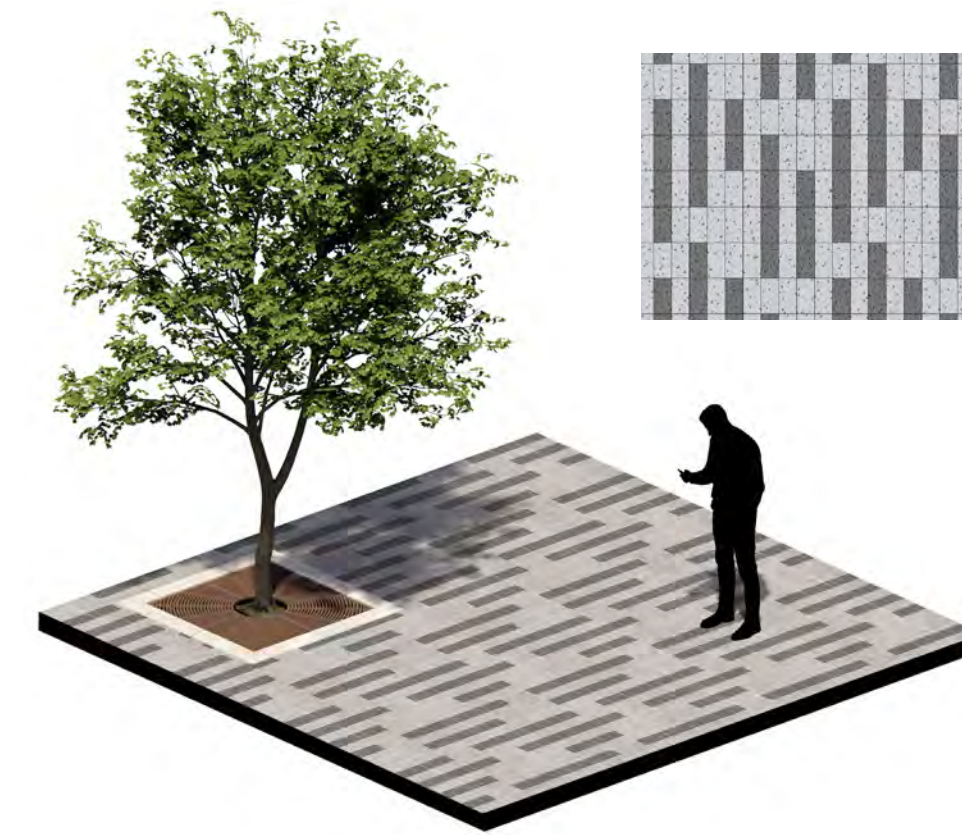
Industrial Avenue wave pattern at Langley City Centre Station

Station specific paving treatment

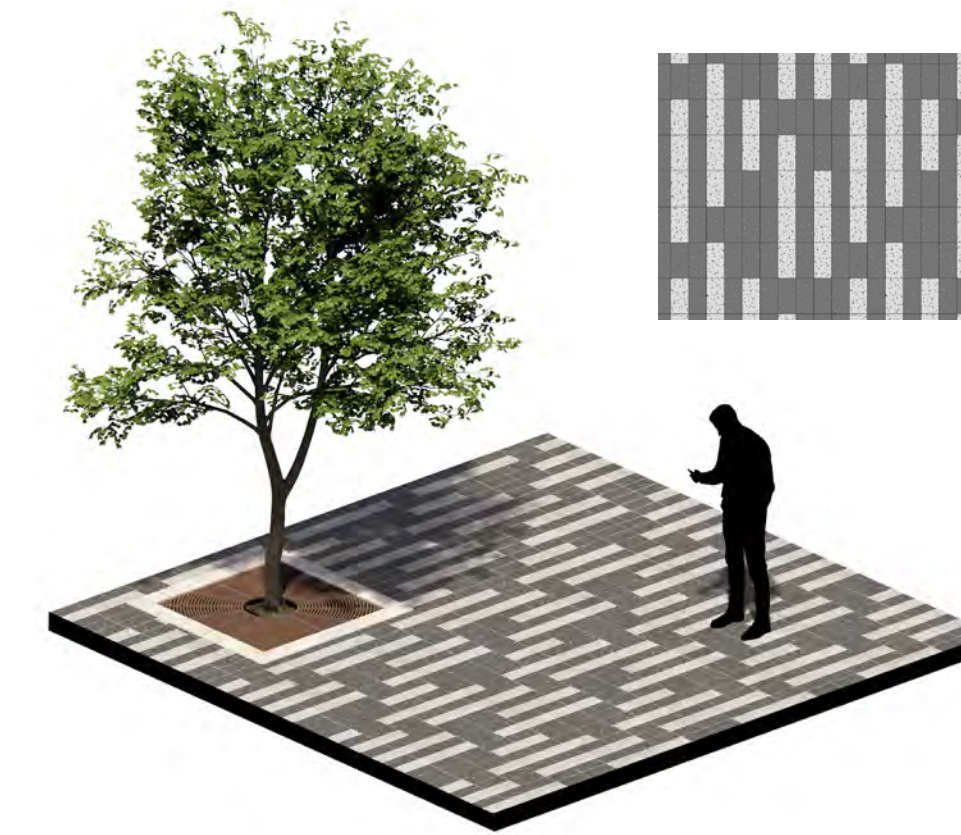
**Specific patterns may be adjusted in detailed design*



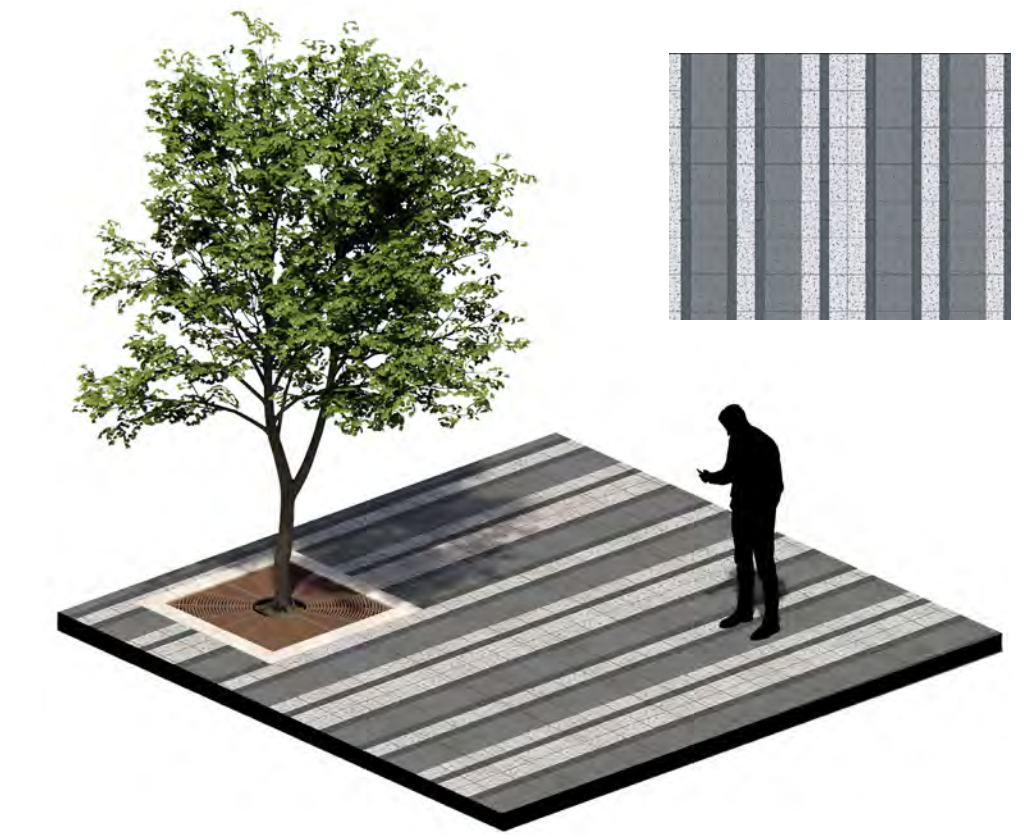
Green Timbers Station



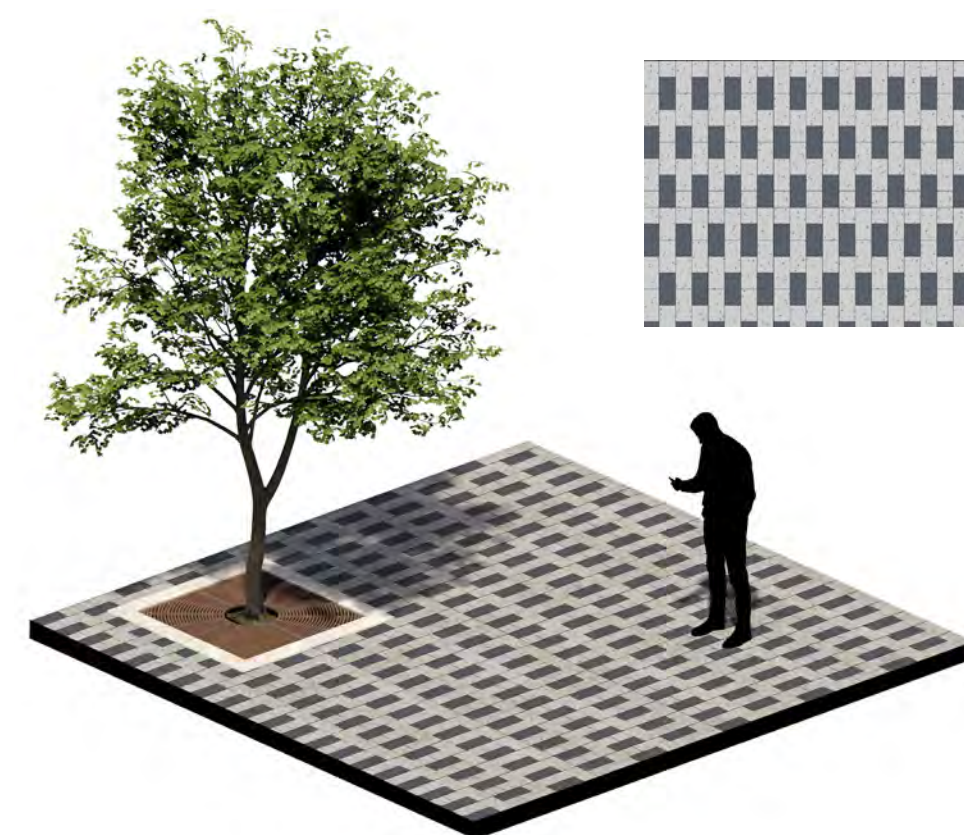
152 St. Station



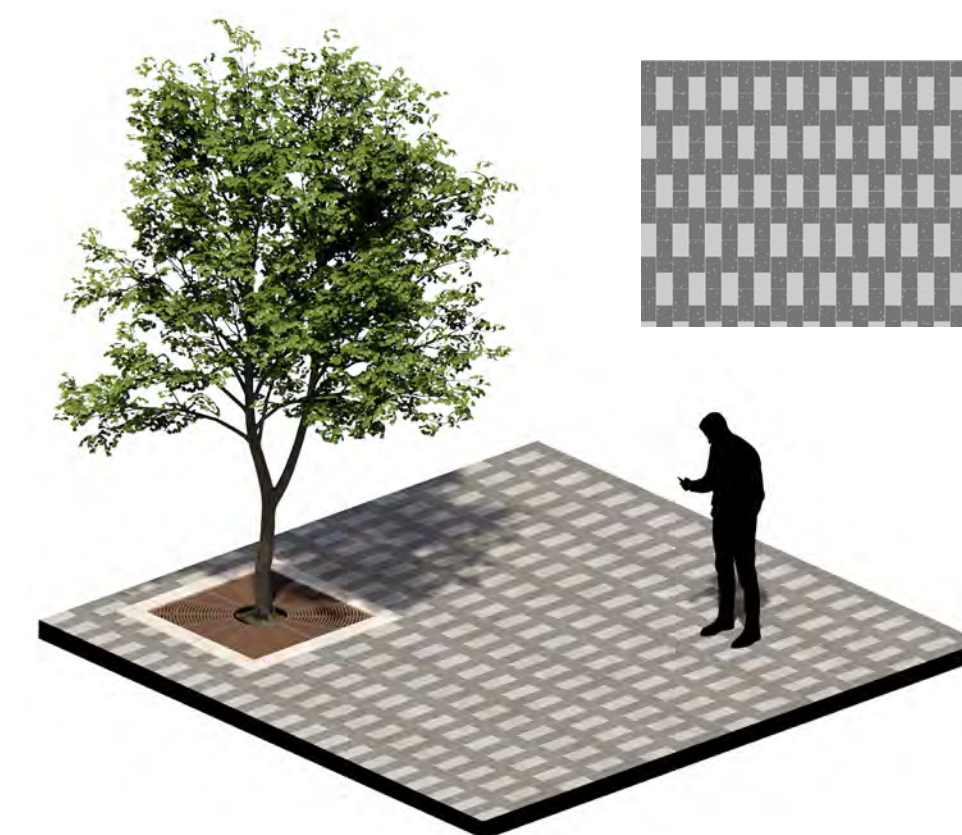
Fleetwood Station



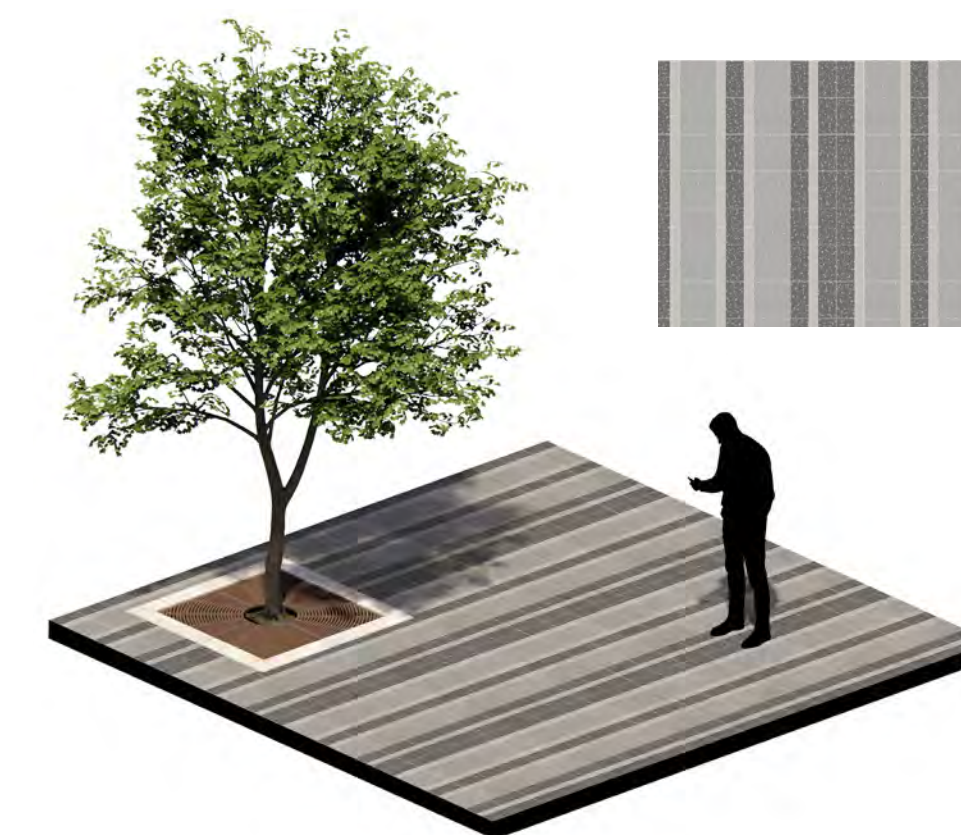
Bakerview-166 St. Station



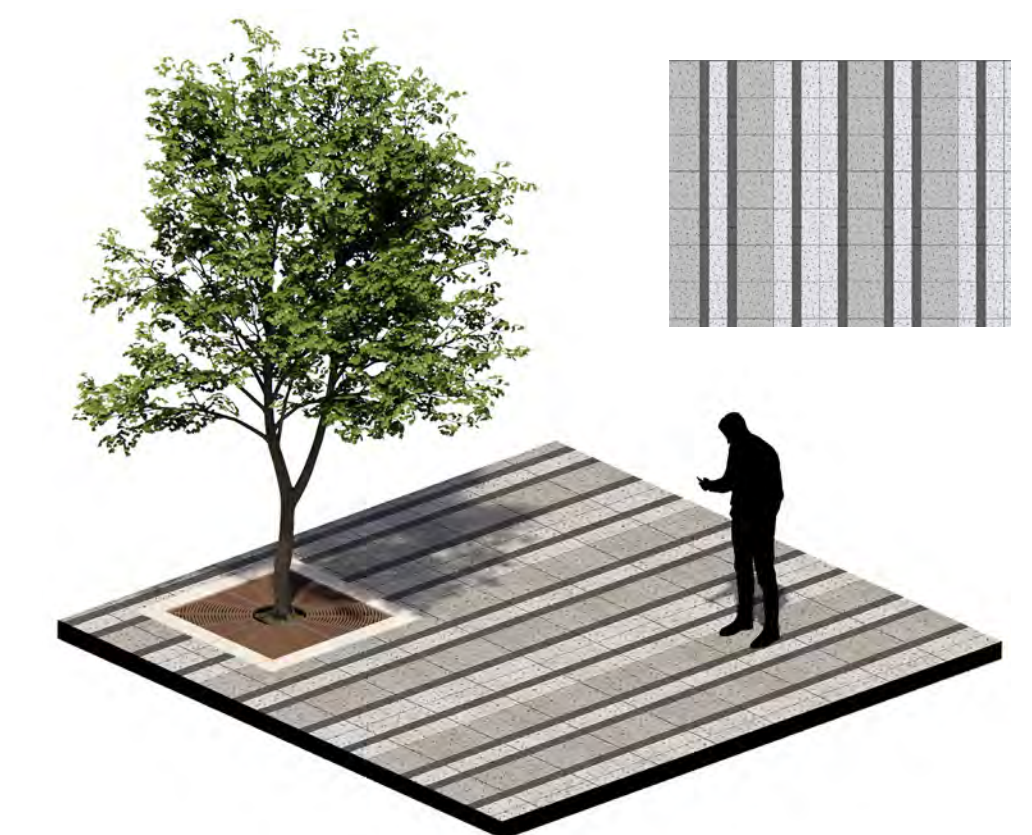
Hillcrest-184 St. Station



Clayton Station



Willowbrook Station



Langley City Centre Station

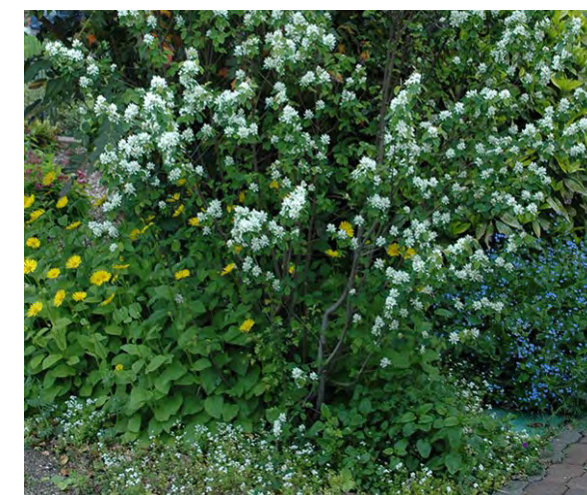
Landscape Enhancements

The planting design emphasizes resilience, sustainability and cohesiveness. Landscaping will create seasonal interest and enhance the character of each station. Both ornamental and native species will be considered for their drought tolerance, hardiness, and adaptability to local conditions. Final planting selections will also consider First Nations input.

Trees



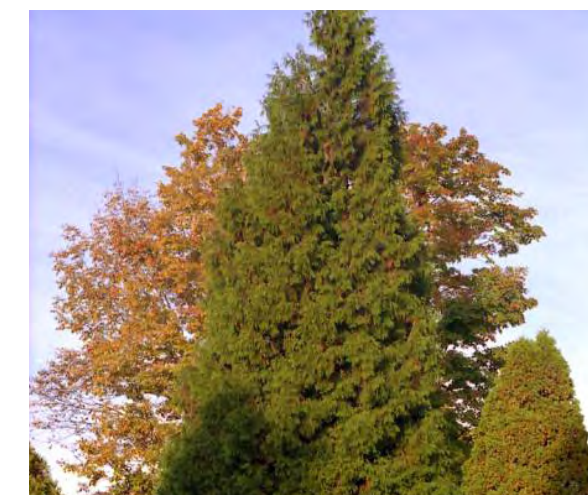
Pacific Madrone
Arbutus menziesii



Saskatoon Serviceberry
Amelanchier alnifolia



Paper Birch
Betula-papyrifera



Western Red Cedar
Thuja-Plicata



Bird Cherry
Prunus padus



Pacific Dogwood
Cornus-nuttalii



Pacific Crabapple
Malus-fusca



Western White Pine
Pinus-monticola



Ponderosa Pine
Pinus-ponderosa



Douglas Fir
Pseudotsuga-menziesii



Western Hemlock
Tsuga-heterophylla



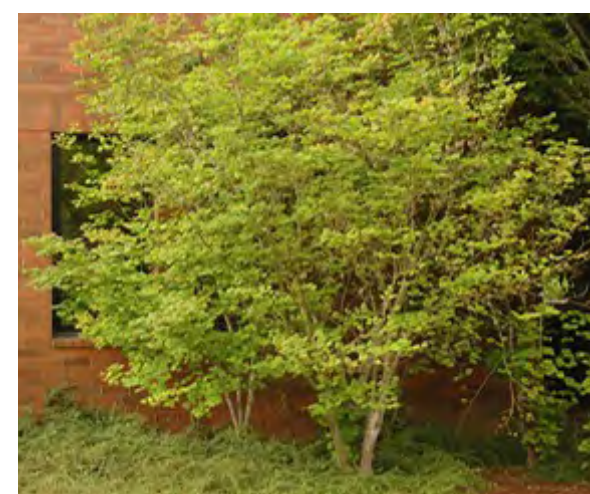
Oregon Ash
Fraxinus Latifolia



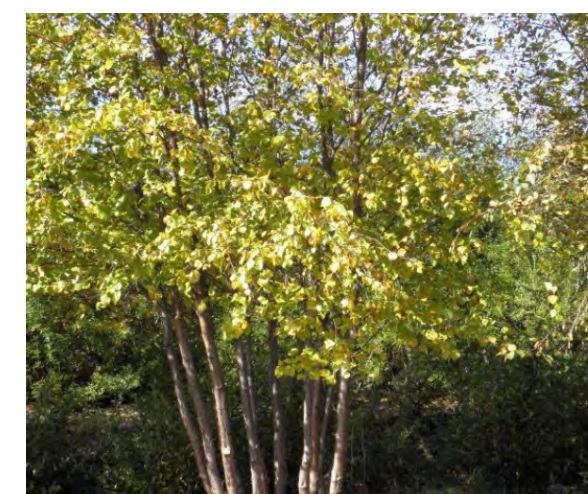
Quaking Aspen
Populus tremuloides



Mountain Hemlock
Tsuga-mertensiana



Vine Maple
Acer circinatum



Western Interior Birch
Betula occidentalis

Shrubs



Daylilies
Hemerocallis Stella d'oro



Deer Fern
Blechnum spicant



Evergreen Huckleberry
Vaccinium ovatum



Flowering Hydrangea
Hydrangea macrophylla



Fountain Grass
Pennisetum setaceum



Fragrant Sweet Box
Sarcococca confusa



Privet Honeysuckle
Lonicera-Pileate



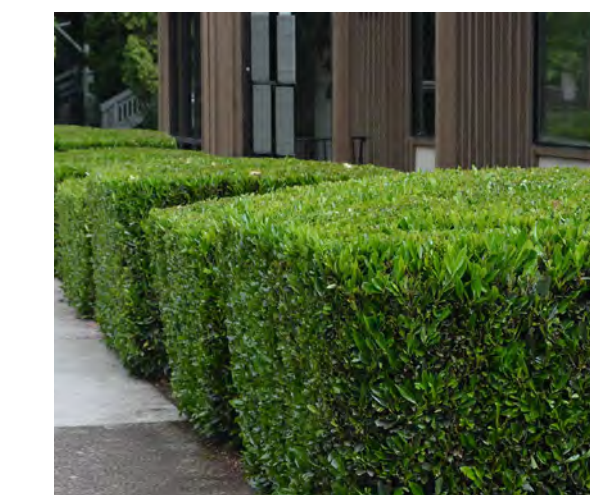
Japanese Holly
Ilex crenata



Lily Turf
Liriope muscari



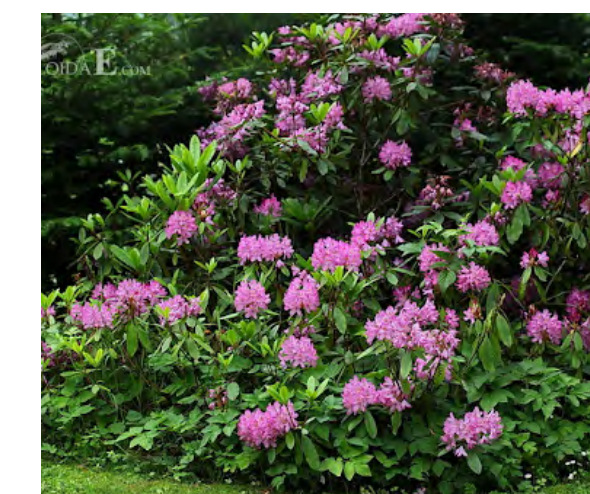
Littleleaf Boxwood
Buxus microphylla



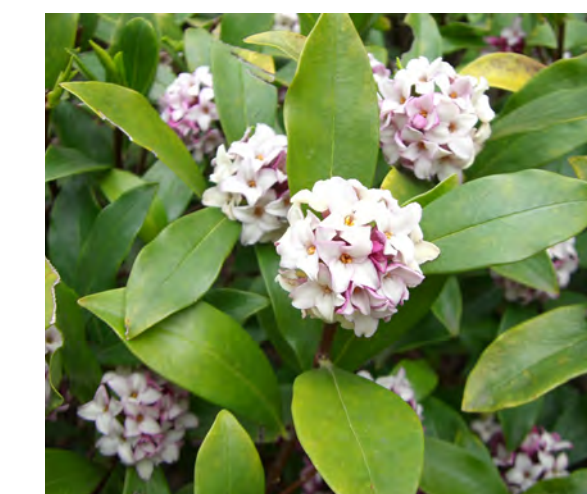
Otto Luyken Laurel
Prunus laurocerasus 'Otto Luyken'



Redflower Currant
Ribes Sanguineum



Rhododendron
Rhododendron sp



Winter Daphne
Daphne odora