



KITSELAS TREATY

A LIVING AGREEMENT

...

ATLAS



KITSELAS
FIRST NATION



BRITISH
COLUMBIA

TABLE OF CONTENTS

| | |
|--|----------|
| Kitselas Harvest Area Map | 1 |
| Impact Assessment Area Map | 2 |
| Kitselas Migratory Birds Harvest Area Map | 3 |
| Kitselas Fishing Area Map | 4 |

Note

January 24, 2025

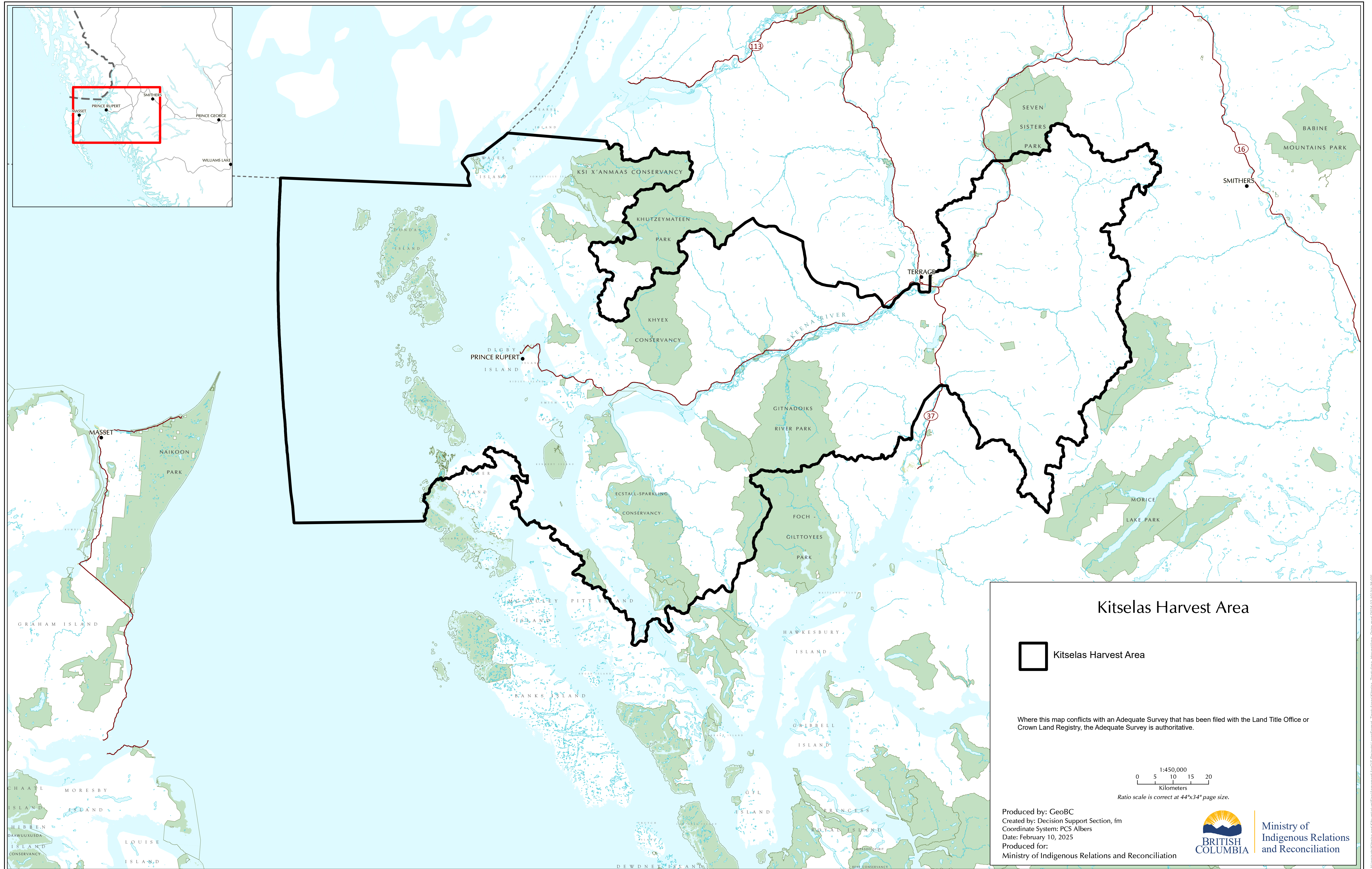
The draft Kitselas Treaty was initialed (“Initialled Version”) on June 24, 2024 by the Chief Negotiators of Kitselas, Canada and British Columbia, subject to the understandings identified at the beginning of the Initialled Version.

The Parties have completed further technical review of the Initialled Version and resolved matters that were outstanding at the time of the initialling and the Chief Negotiators for the Parties have agreed on changes to the Initialled Version.


This version of the Kitselas Treaty (“Ratification Version”) replaces the Initialled Version.

This Ratification Version is subject to the following understandings:

1. There may be changes to the Ratification Version as a result of engagement with Kitselas members, ongoing Crown consultation with neighbouring Nations, and internal Kitselas, federal and provincial approval processes. Changes will be available for review by Eligible Voters prior to the vote.
 2. After the Treaty Ratification Vote on this Agreement by Kitselas, but before the Parties sign this Agreement, the Chief Negotiators on behalf of each Party may agree to minor changes to this Agreement in accordance with paragraph 99 of the General Provisions Chapter.
 3. Before the Effective Date, the Chief Negotiators for each Party may agree to changes to this Agreement and the Appendices to update information or correct any editing, grammatical or typographical errors and any updated information or corrections may be incorporated in the printing of this Agreement, the Appendices and the Atlas after the Effective Date in accordance with paragraph 100 of the General Provisions Chapter.
-



Kitselas Harvest Area

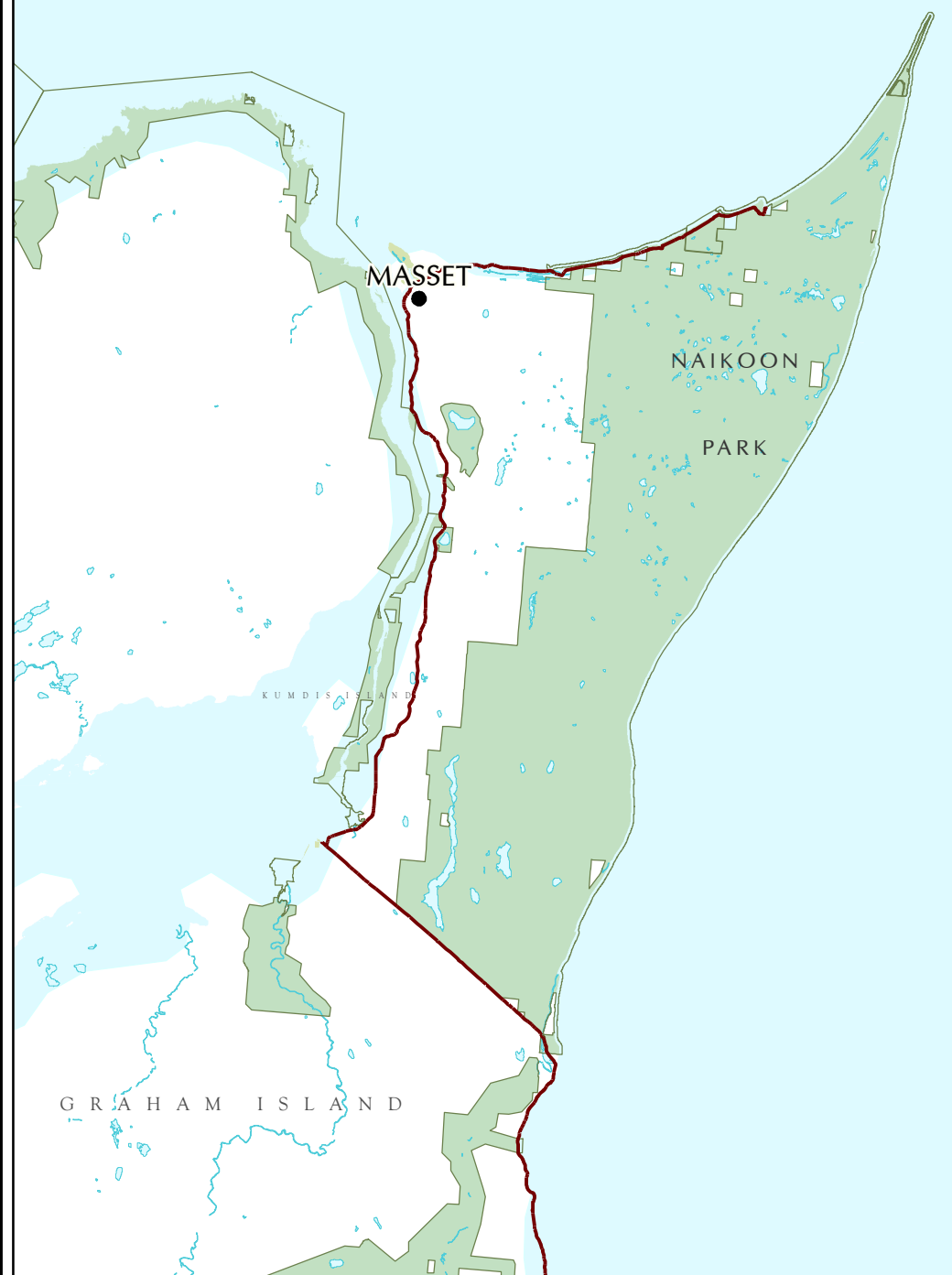
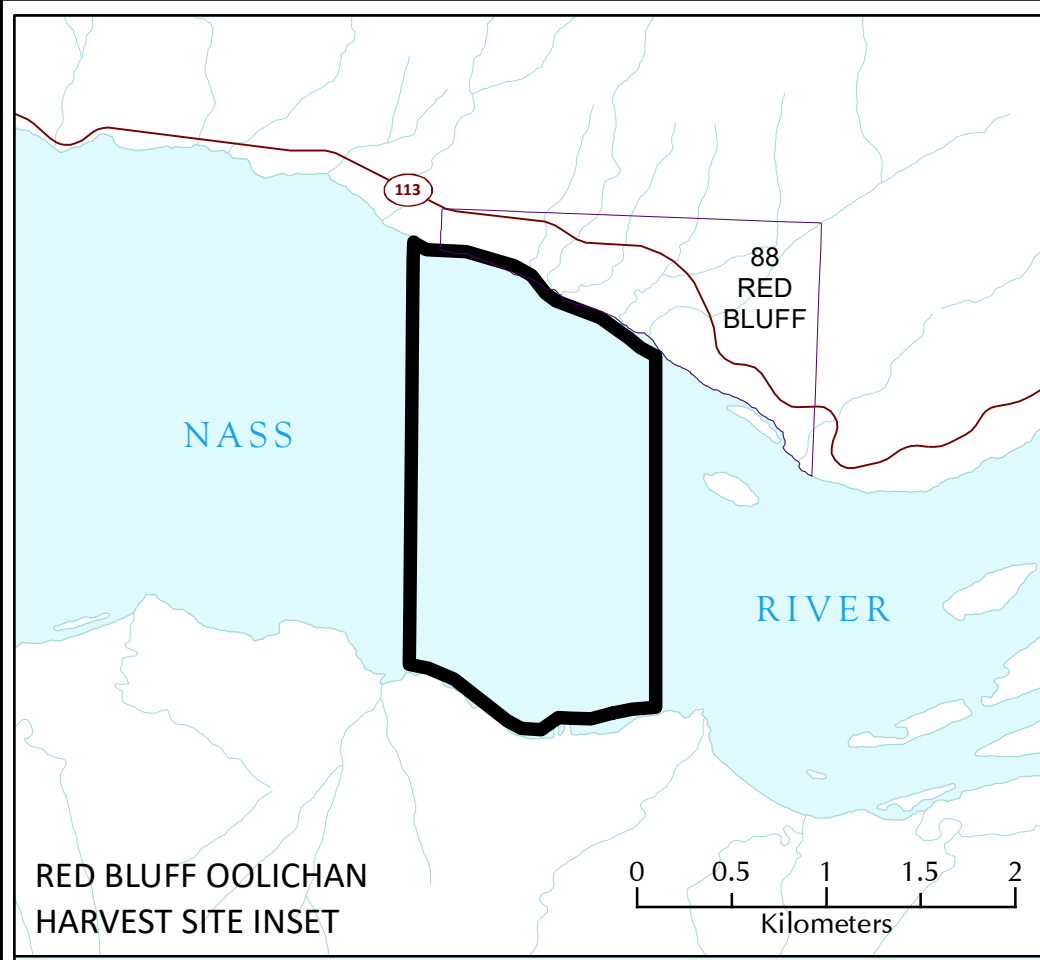
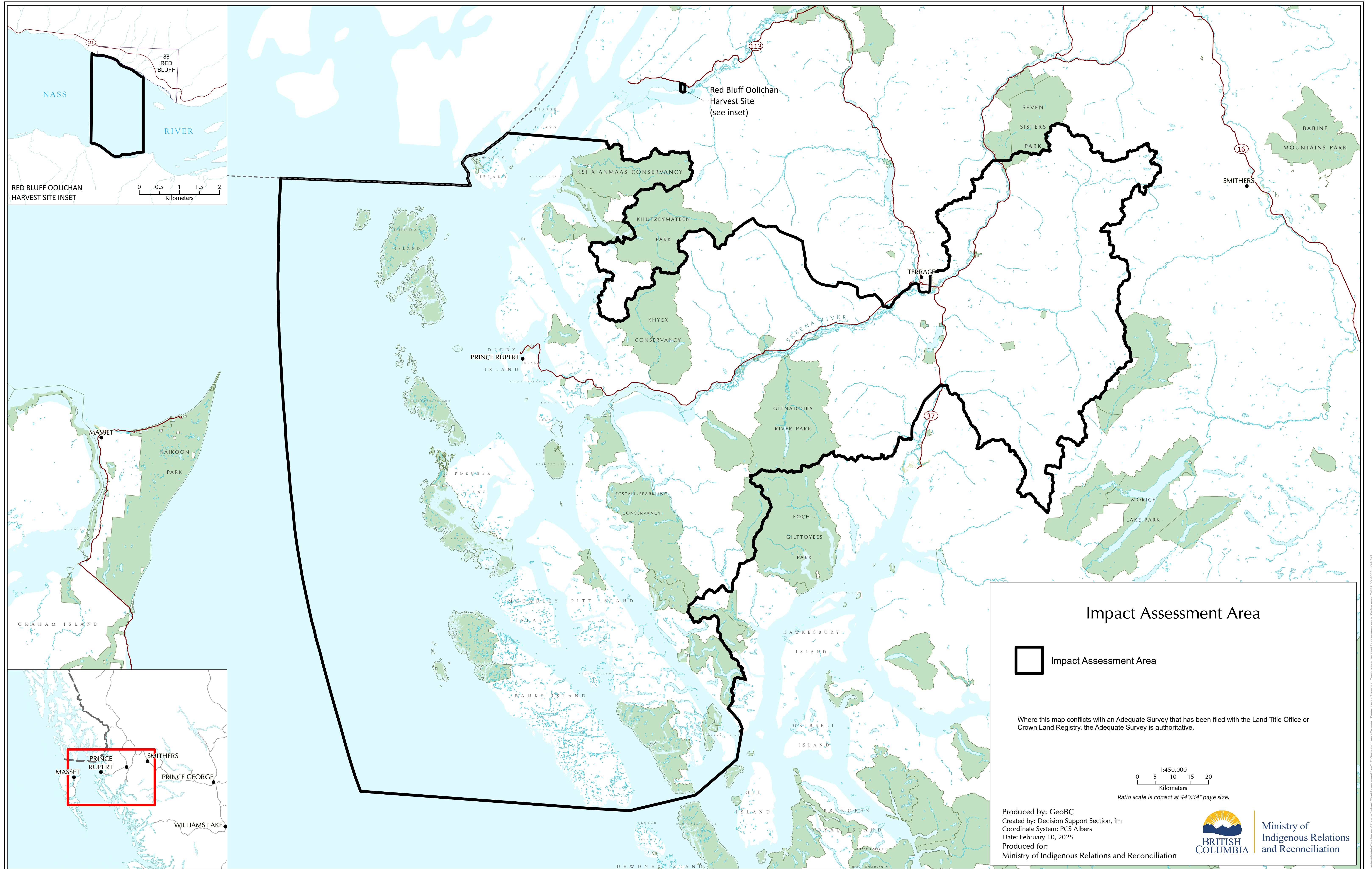
 Kitselas Harvest Area

Where this map conflicts with an Adequate Survey that has been filed with the Land Title Office or Crown Land Registry, the Adequate Survey is authoritative.

1:450,000
 0 5 10 15 20
 Kilometers
 Ratio scale is correct at 44"x34" page size.

Produced by: GeoBC
 Created by: Decision Support Section, fm
 Coordinate System: PCS Albers
 Date: February 10, 2025
 Produced for:
 Ministry of Indigenous Relations and Reconciliation





Impact Assessment Area

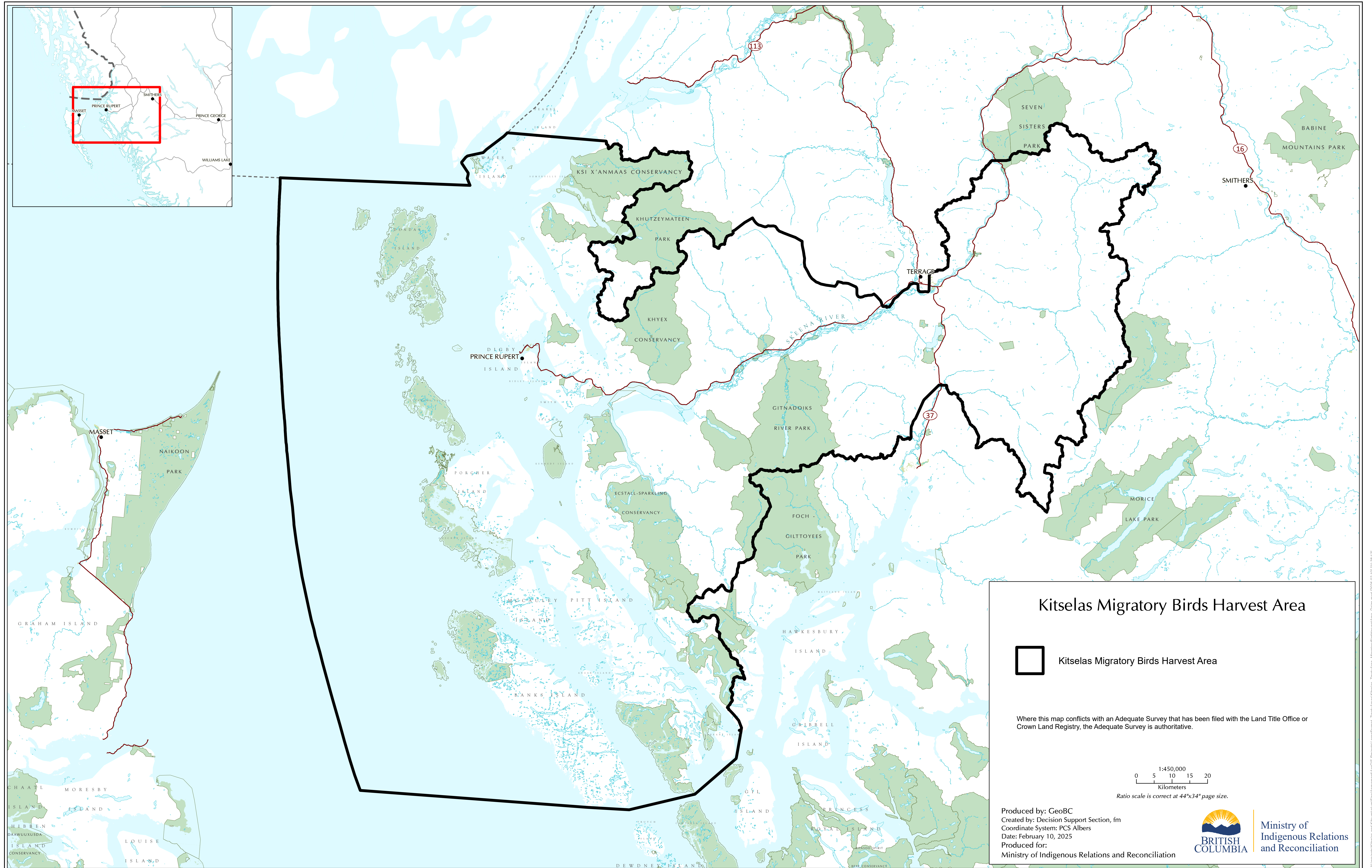
Impact Assessment Area

Where this map conflicts with an Adequate Survey that has been filed with the Land Title Office or Crown Land Registry, the Adequate Survey is authoritative.

1:450,000
0 5 10 15 20
Kilometers
Ratio scale is correct at 44"x34" page size.

Produced by: GeoBC
Created by: Decision Support Section, fm
Coordinate System: PCS Albers
Date: February 10, 2025
Produced for:
Ministry of Indigenous Relations and Reconciliation

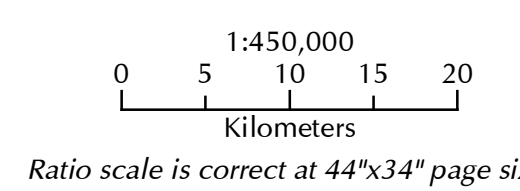
BRITISH COLUMBIA Ministry of Indigenous Relations and Reconciliation



Kitselas Migratory Birds Harvest Area

 Kitselas Migratory Birds Harvest Area

Where this map conflicts with an Adequate Survey that has been filed with the Land Title Office or Crown Land Registry, the Adequate Survey is authoritative.



Produced by: GeoBC
 Created by: Decision Support Section, fm
 Coordinate System: PCS Albers
 Date: February 10, 2025
 Produced for:
 Ministry of Indigenous Relations and Reconciliation



