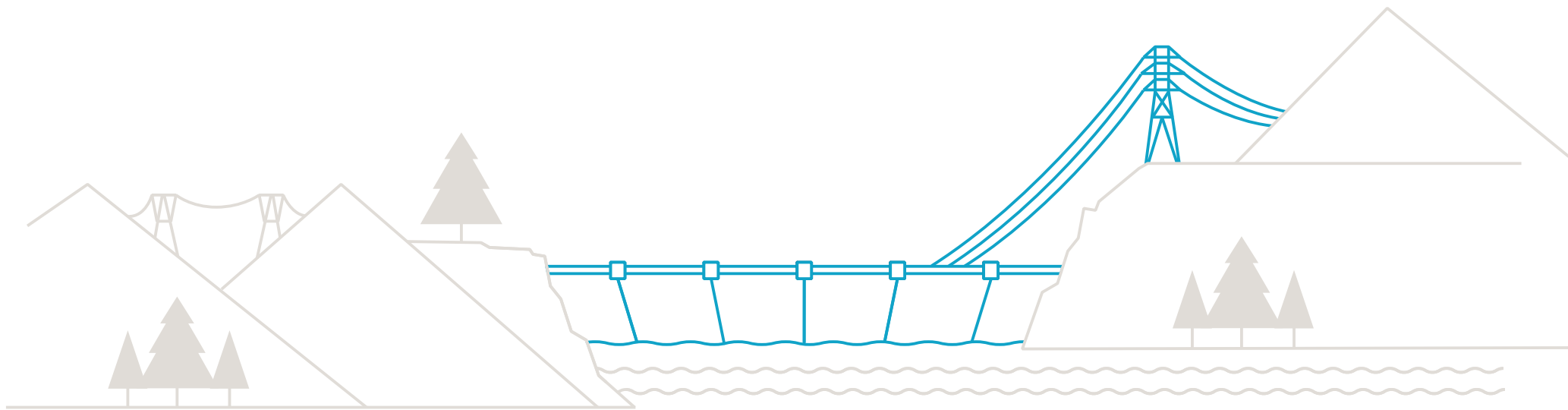


2020 Columbia Operations Update Meeting



Conference Call
Friday, June 26, 2020

Weather and Inflow Summary

Weather:

Precipitation and Temperature (compared to 1981-2010 Normal)

Month	Precipitation by Region						Temperature by Region (°C)			
	Columbia			Kootenay			Columbia		Kootenay	
	Total (mm)	% of Normal	Accrued since Oct	Total (mm)	% of Normal	Accrued since Oct	Daily Average	+/- from Normal	Daily Average	+/- from Normal
Jan 2020	182	143%	110%	130	163%	107%	-6.1	-0.2	-2.4	+1.4
Feb 2020	97	114%	110%	53	119%	108%	-4.5	-0.5	-1.5	+0.4
Mar 2020	77	82%	107%	48	82%	105%	-2.1	-2.0	+1.2	-1.1
Apr 2020	46	63%	102%	26	51%	98%	+2.7	-1.6	+5.6	-1.2
May 2020	102	130%	105%	71	114%	100%	+8.4	-0.6	+11.1	-0.2

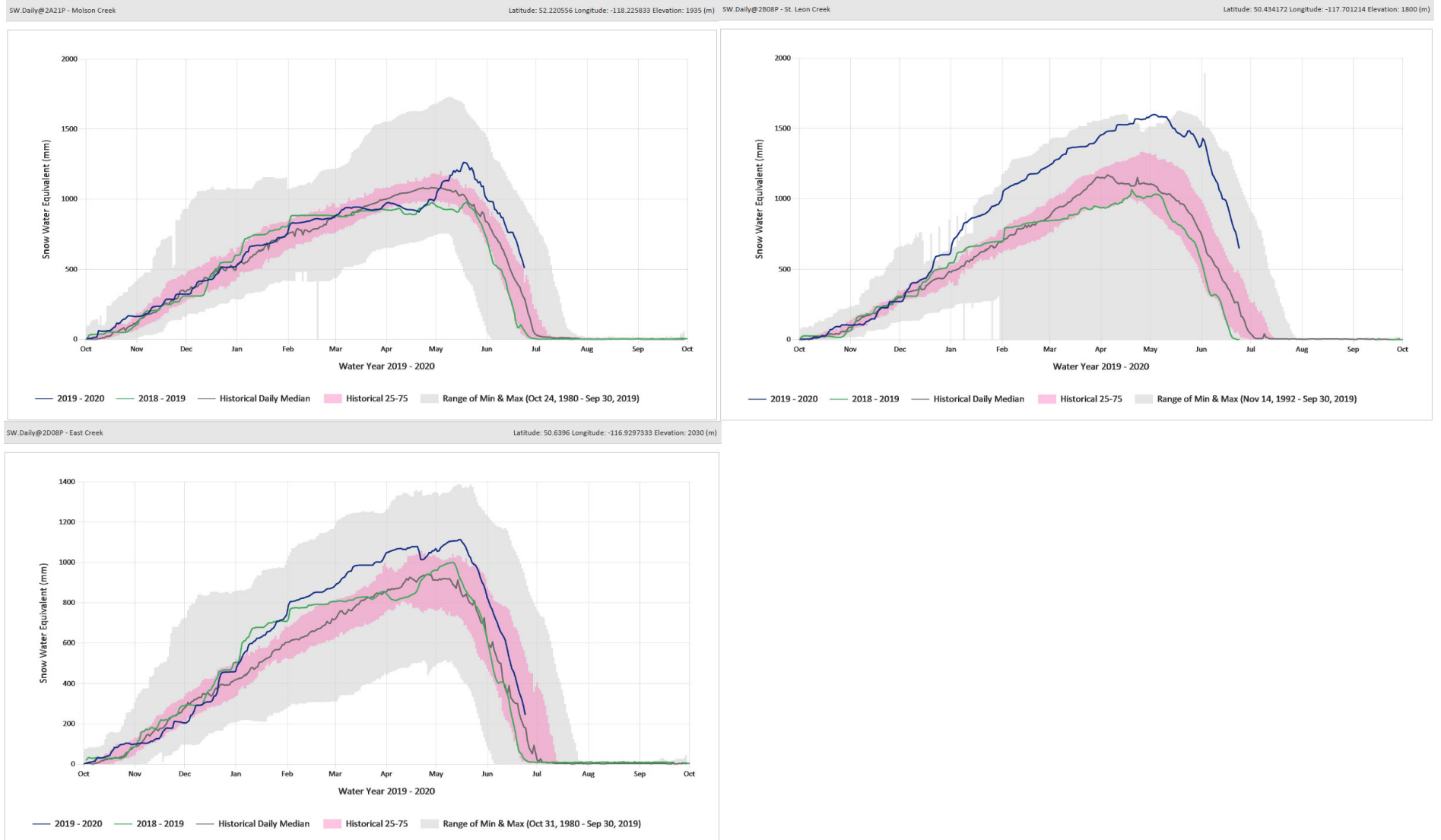
Notes:

Inflow and Snowpack (compared to 1981-2010 Normal)

Month	Inflow by Region (% of Normal)							Snow Water Equivalent by Region**			
	Columbia				Kootenay			Columbia		Kootenay	
	Region Ave*	Mica	Revel-stoke	Arrow	Region Ave*	Duncan	Kootenay L.	Total (mm)	% of Normal	Total (mm)	% of Normal
Jan 2020	124%	103%	132%	92%	106%	116%	90%	407	115%	252	85%
Feb 2020	131%	99%	134%	109%	122%	114%	101%	665	126%	501	120%
Mar 2020	75%	95%	92%	54%	67%	75%	52%	779	121%	522	118%
Apr 2020	78%	71%	78%	79%	71%	70%	63%	892	120%	663	114%
May 2020	122%	107%	114%	118%	118%	112%	109%	899	119%	613	114%
Jun 2020	117%	114%	119%	117%	113%	109%	116%	834	127%	331	67%

Notes: * Region average inflow is based on an average of all basins contributing to the region not weighted for basin area.
 ** At beginning of month.
 *** based on preliminary data

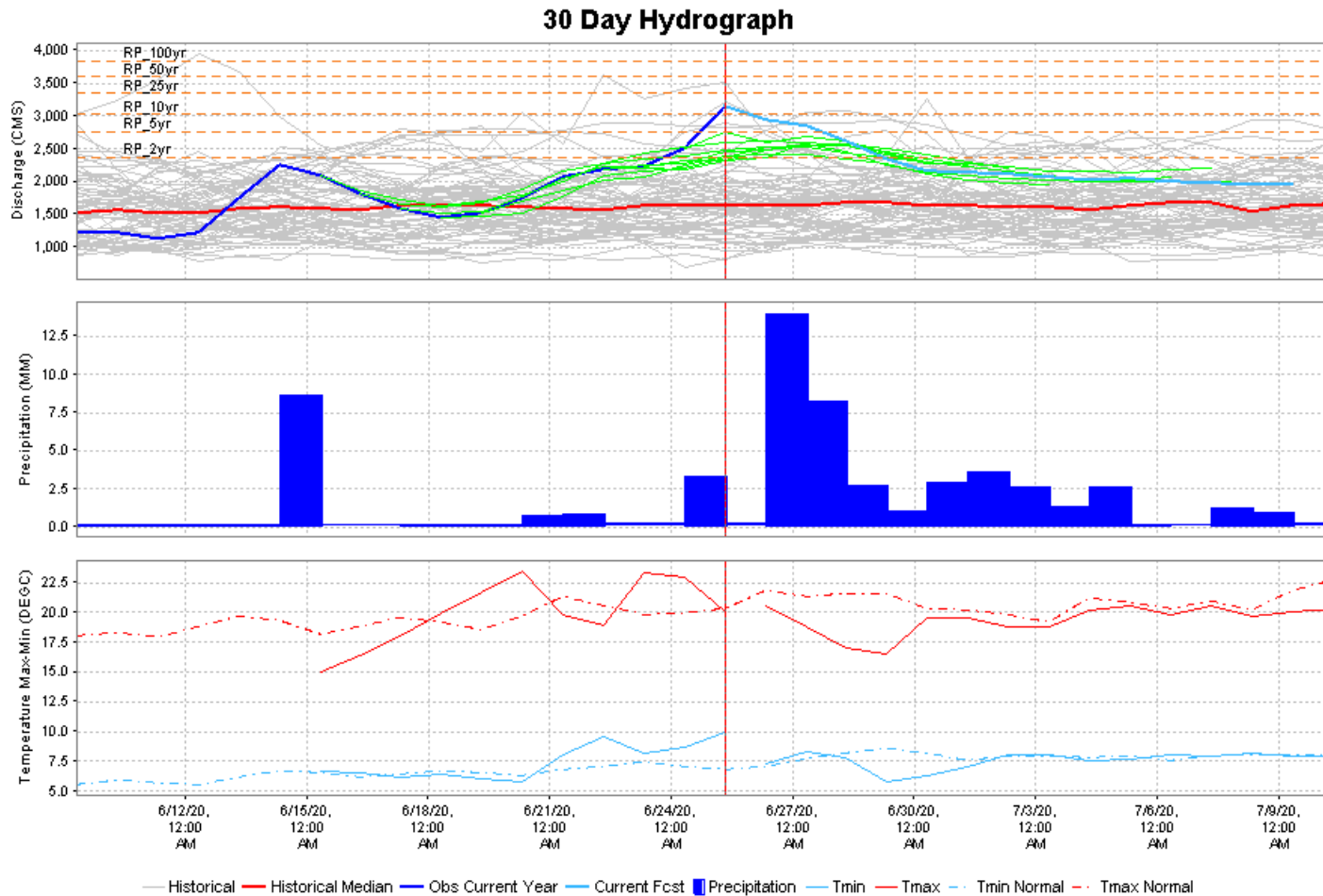
2020 Canadian Columbia Snowpack



Mica Inflow Hydrograph

30 Day Inflow Hydrograph for Mica

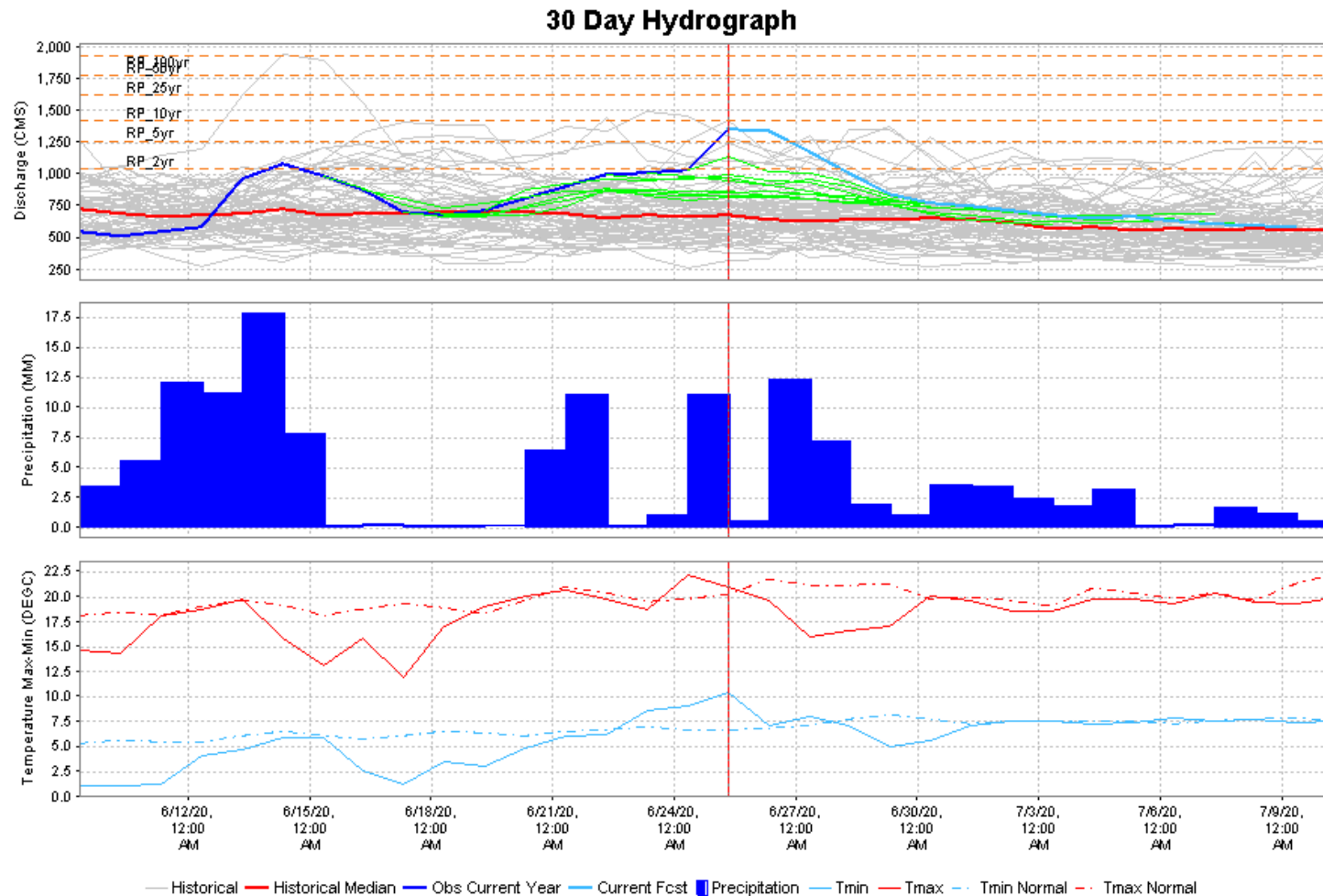
*** All data in the graphs are period ending ***



Revelstoke Inflow Hydrograph

30 Day Inflow Hydrograph for Revelstoke

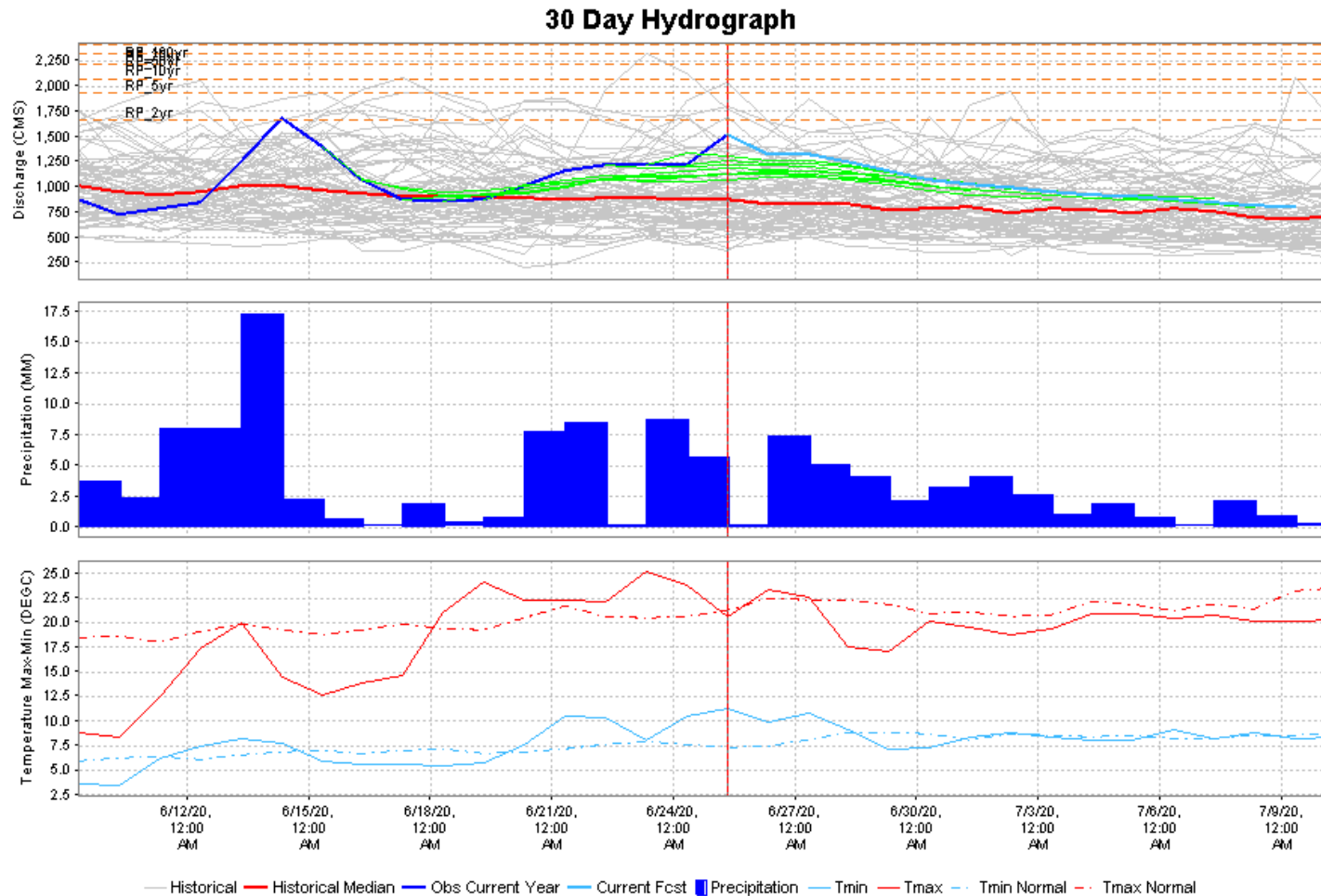
*** All data in the graphs are period ending ***



Arrow Inflow Hydrograph

30 Day Inflow Hydrograph for Arrow Local

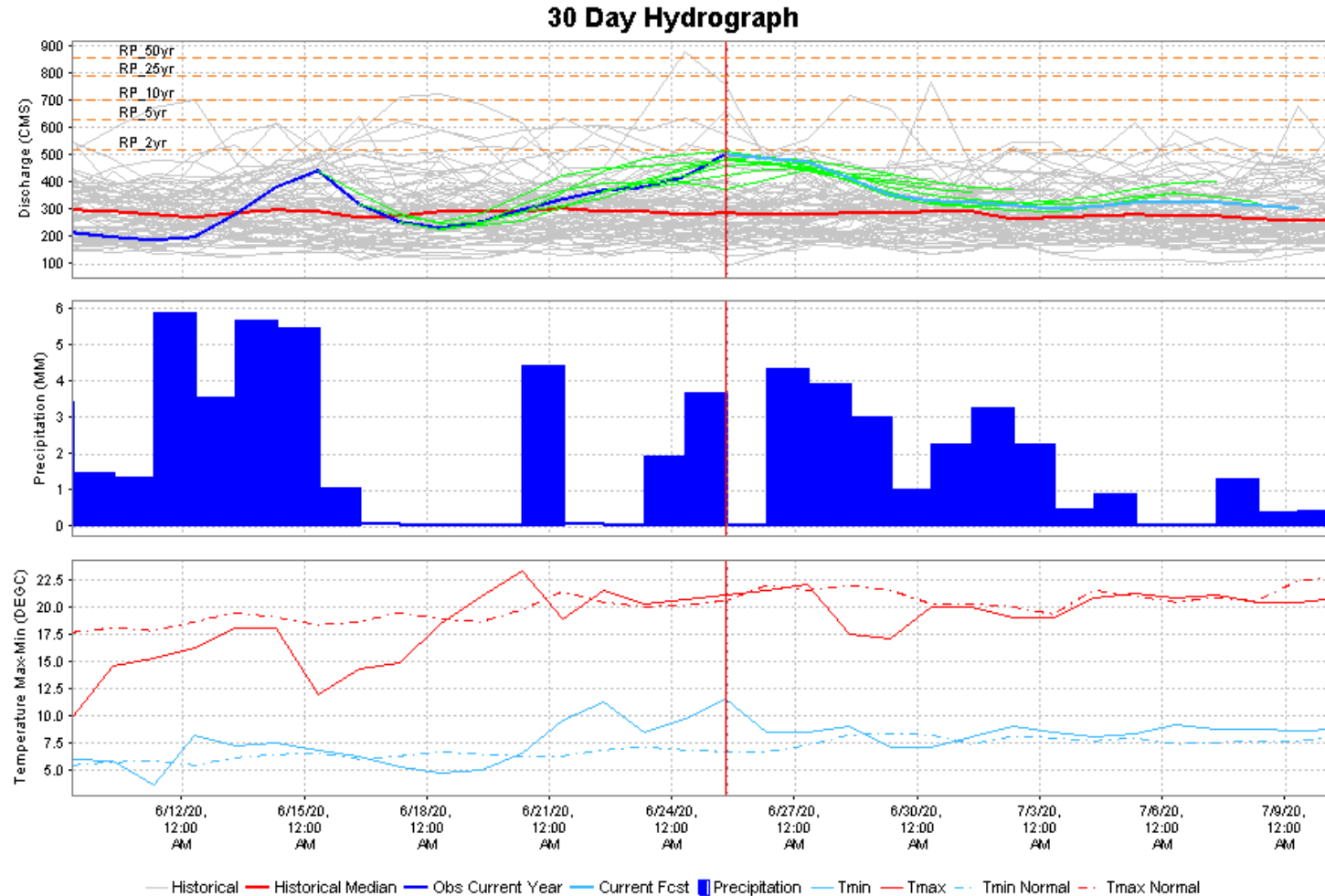
*** All data in the graphs are period ending ***



Duncan Inflow Hydrograph

30 Day Inflow Hydrograph for Duncan

*** All data in the graphs are period ending ***



Expected Water Supply



- The current (June 25th) runoff forecast for the entire Columbia basin at The Dalles is above normal at 109% for April – September 2020, 15% higher than the observed runoff in 2019.
- For the Canadian portion of the basin, the runoff forecast for 2020 is well above normal at 114% of normal, 27% higher than the observed runoff in 2019.

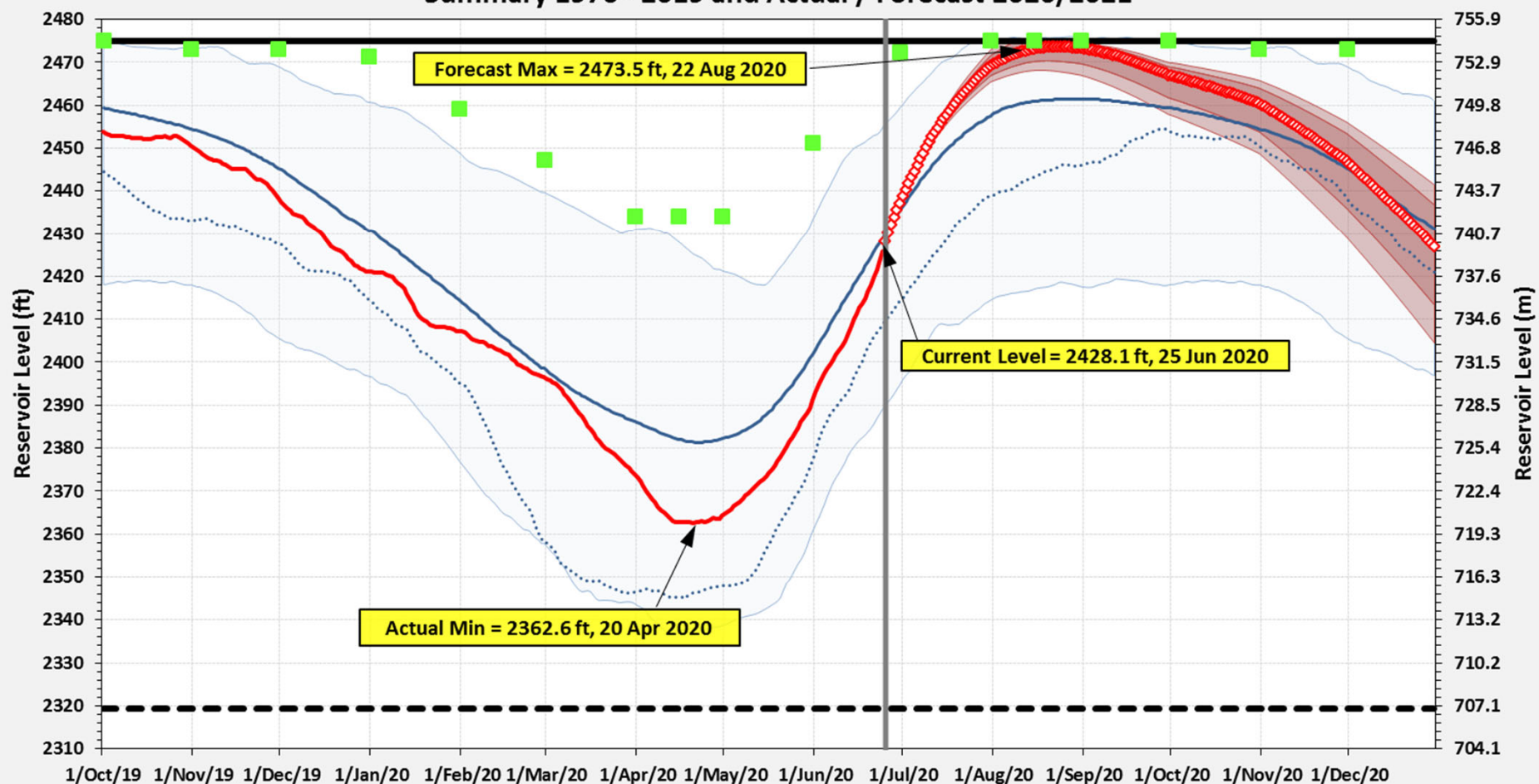
Kinbasket Reservoir

- Kinbasket is currently at about 2,428 feet, about 3 feet below average.
- Kinbasket is currently forecast to refill to within 5 feet from full in August subject to inflows and loads.
- Due to forecast of high inflows and uncertainty around loads, BC Hydro sought permission from the Water Comptroller to operate 1 foot above the normal full supply level and the permission was recently granted.
- Inflows peaked at about 110 kcfs on Wed, just above the 10-year return period due to intense snowmelt and rainfall runoff.
- Inflows will remain similar over the next two days with additional rainfall input slowing the recession on the weekend.
- Mica inflows should remain above the 2-year return period for the next couple of days.

KINBASKET RESERVOIR (MCA) LEVELS

Summary 1976 - 2019 and Actual / Forecast 2020/2021

Forecast Date: Jun 25, 2020



This forecast is confidential and is the property of BC Hydro. The forecast is subject to change at any time without notice. Distribution of the forecast to any third party or use by any unintended recipient is prohibited without BC Hydro's written consent. Notes:

- Reservoir levels up to 2476' may be required for flood risk management in the Canadian portion of the Columbia basin or for the U.S. under the Columbia River Treaty.
- Reservoir level forecasts are subject to change due to changes in projected weather, snowpack, and runoff patterns in the Columbia basin, BC Hydro's load and generation requirements, provisions of the Columbia River Treaty, and other variables during this period.
- BC Hydro expressly disclaims any warranties or representations with respect to this forecast. BC Hydro accepts no liability arising from the use of this forecast. BC Hydro will make reasonable efforts, but is not obliged, to provide updates when the forecast changes.

Min-Max Hist Level Range

Max Normal Level

Mean Level

Expected Plan Level

25%-75%ile Plan Level Range

Min Normal Level

Prev Yr Level

Current Day

10%-90%ile Plan Level Range

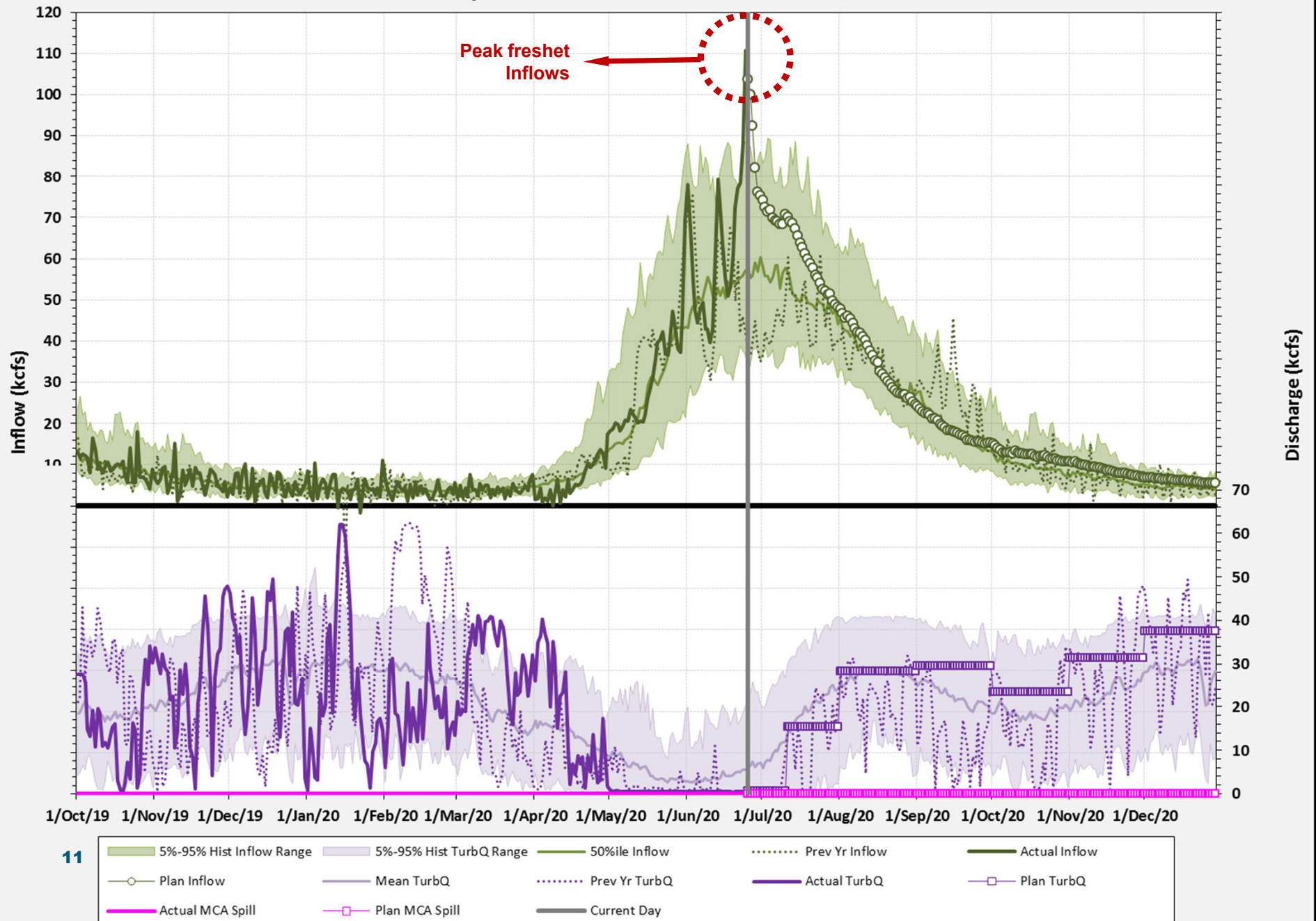
Flood Control Level

Actual Level

KINBASKET RESERVOIR (MCA) FLOWS

Summary 1971 - 2019 and Actual / Forecast 2020

Forecast Date: Jun 25, 2020



Revelstoke Reservoir

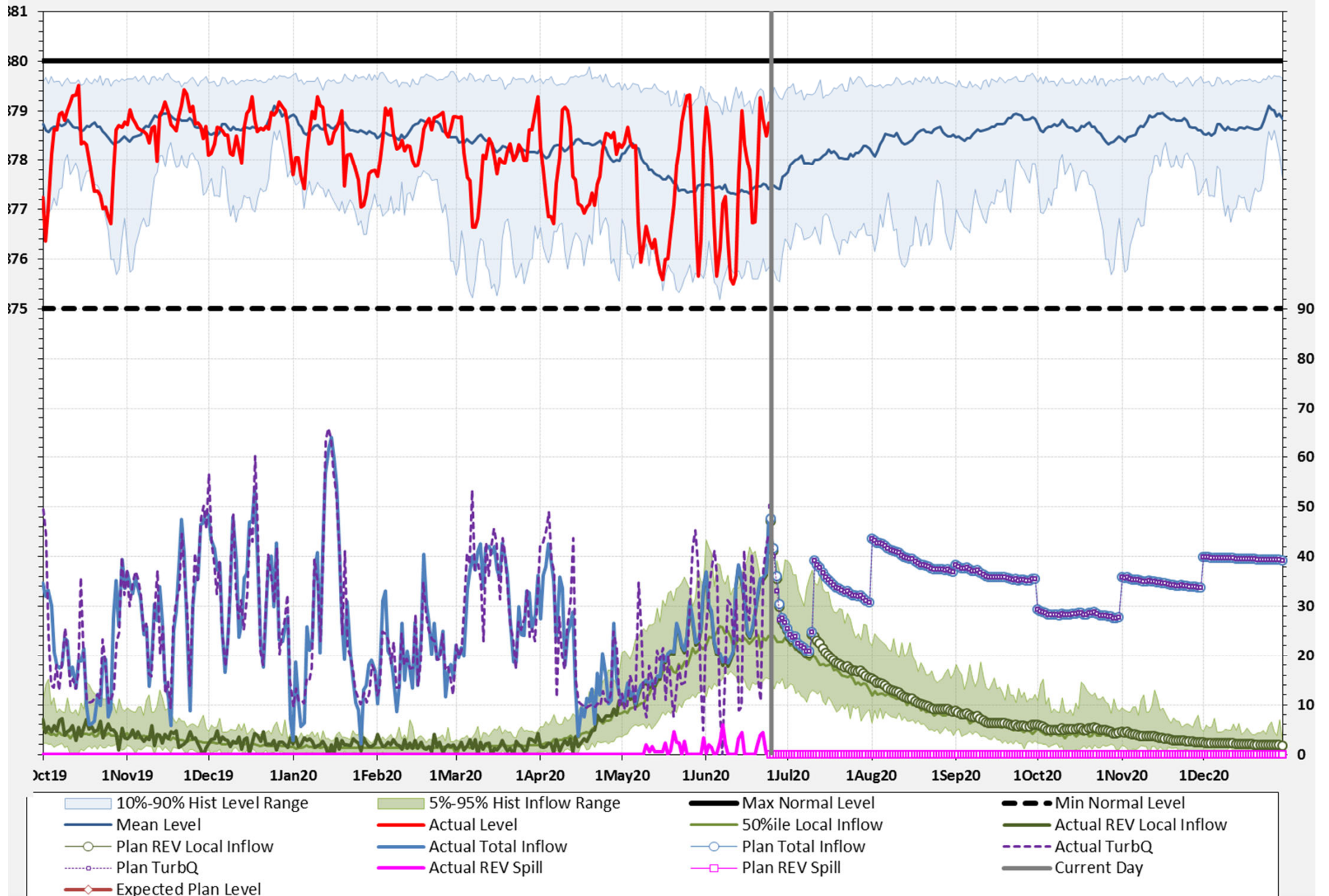
- Revelstoke Reservoir's normal operating range is between 571.5 – 573.0 metres (1,875 – 1,880 feet).
- Occasionally, water levels are below normal operating range when needed to meet winter's high electricity demands or to manage freshet inflows.
- In May and June, small volumes of water have been periodically released over the spillway to maintain minimum flows during low demand periods.
- Inflows peaked above the 5-year return period on Wed and is expected to remain high due to forecast of more rainfall this weekend.
- Additional spills may be required for forebay management based on the current forecast of high inflows.



REVELSTOKE RESERVOIR (REV) LEVELS & FLOWS

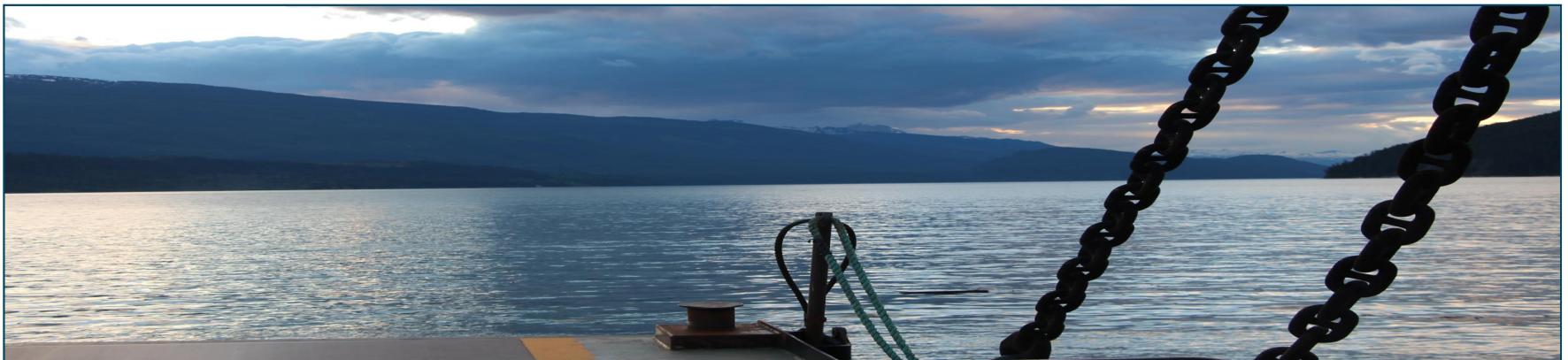
Summary 1984 - 2019 and Actual / Forecast 2020/2021

Forecast Date: Jun 25,



Arrow Lakes Reservoir

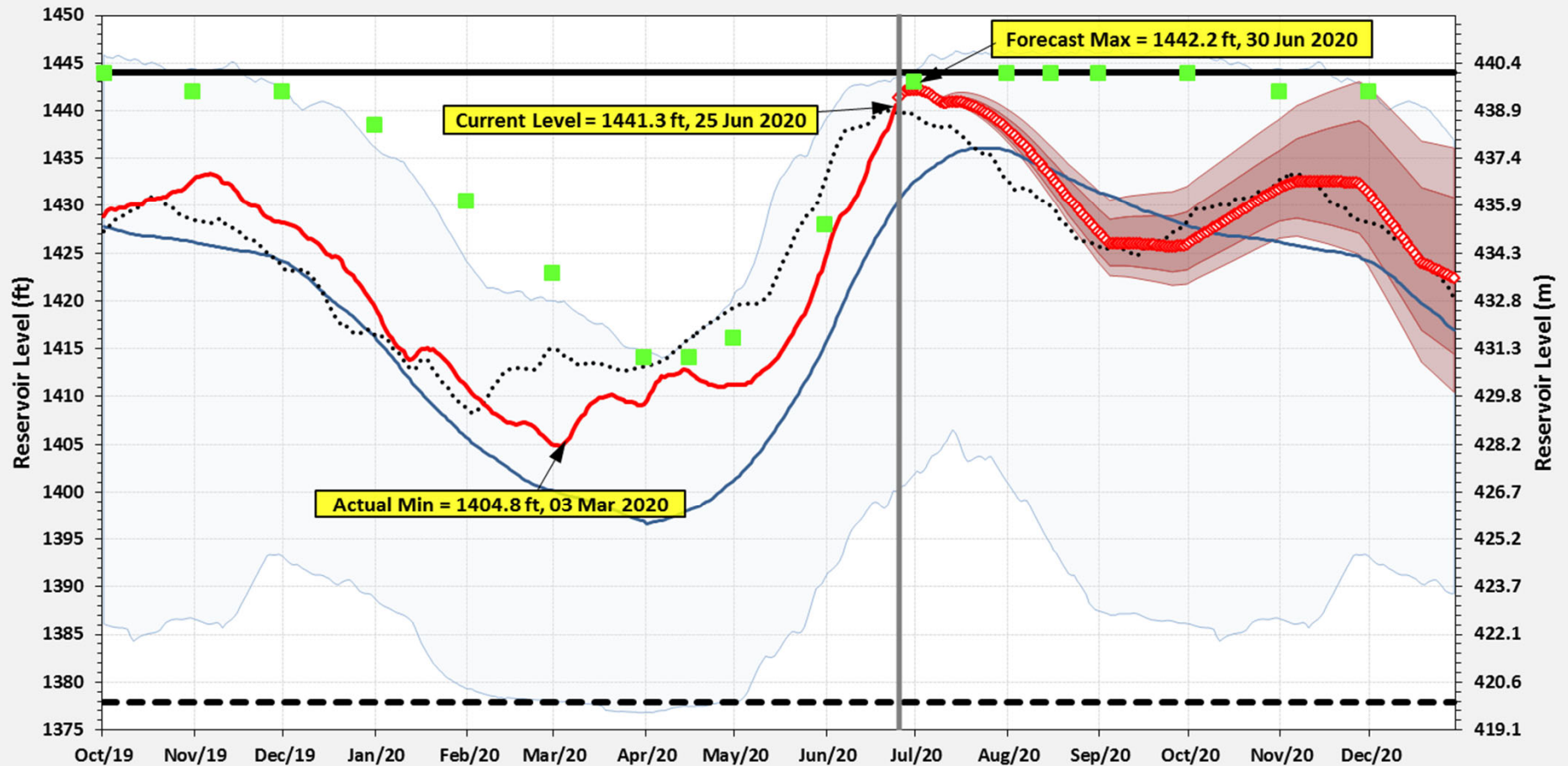
- Arrow reservoir is currently at about 1,441 feet, 3 feet below full pool.
- Arrow discharges were adjusted several times this week to keep pace with the increasing inflows and to control refill of the reservoir.
- Arrow discharge is currently at 61 kcfs – well within the historical range. Additional flow increases maybe required depending on the inflows.
- Arrow flows in July are expected to be similar, between 60 – 70 kcfs for CRT requirements.
- Arrow levels are currently expected to peak to within 1 - 2 feet from full by the end of June or early July.



ARROW LAKES RESERVOIR (ARD) LEVELS

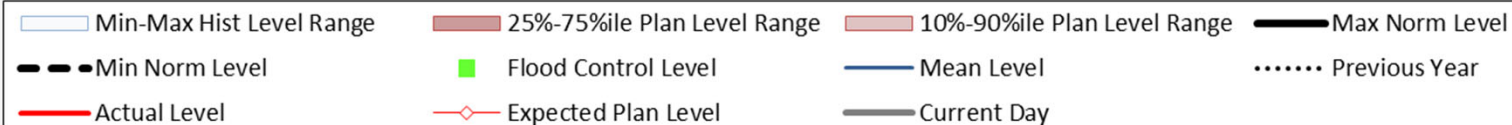
Summary 1968 - 2019 and Actual / Forecast 2020/2021

Forecast Date: Jun 25, 2020



This forecast is confidential and is the property of BC Hydro. The forecast is subject to change at any time without notice. Distribution of the forecast to any third party or use by any unintended recipient is prohibited without BC Hydro's written consent. Notes:

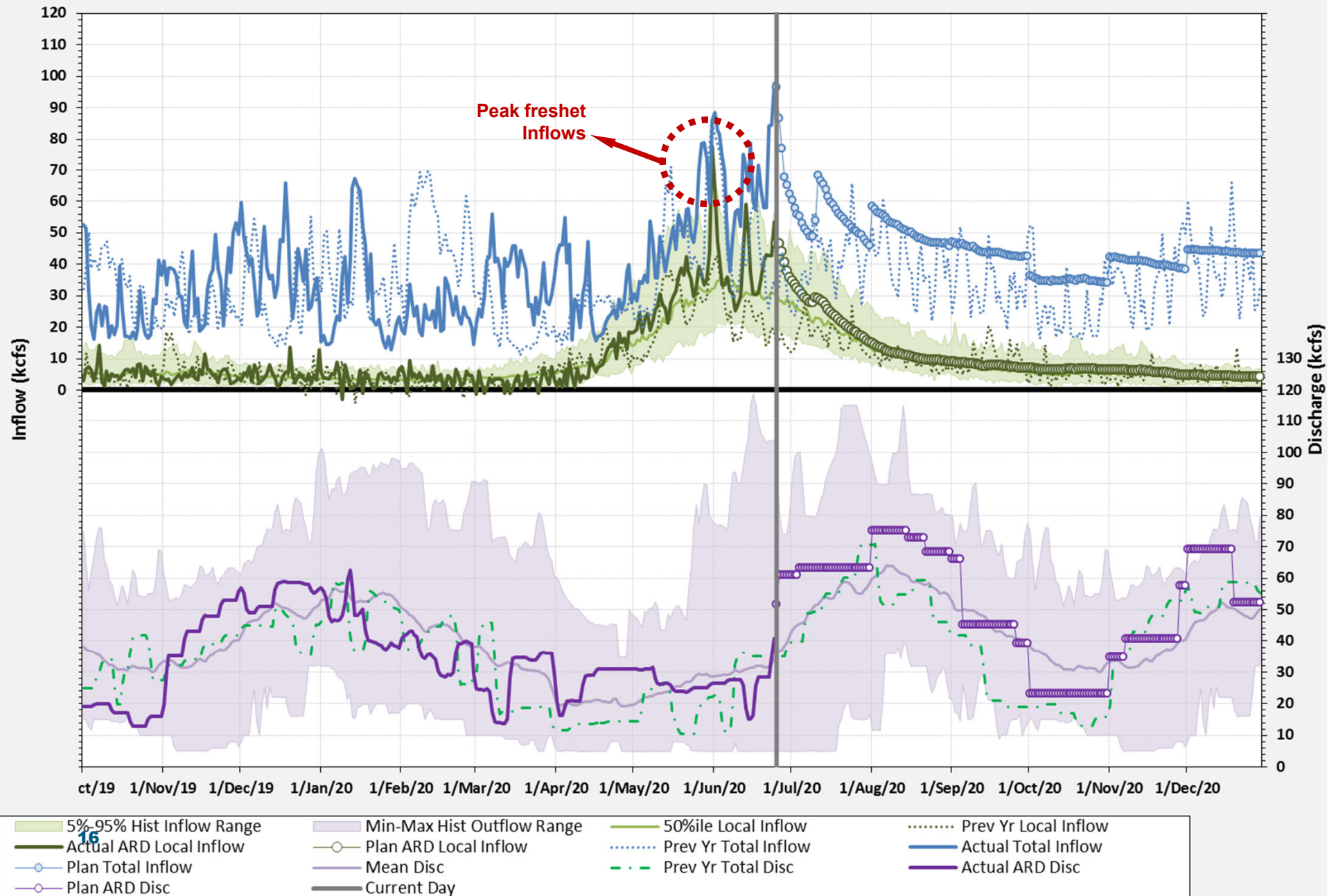
- Reservoir levels up to 1446' may be required for flood risk management in the Canadian portion of the Columbia basin or for the U.S. under the Columbia River Treaty.
- Reservoir level forecasts are subject to change due to changes in projected weather, snowpack, and runoff patterns in the Columbia basin, BC Hydro's load and generation requirements, provisions of the Columbia River Treaty, and other variables during this period.
- BC Hydro expressly disclaims any warranties or representations with respect to this forecast. BC Hydro accepts no liability arising from the use of this forecast. BC Hydro will make reasonable efforts, but is not obliged, to provide updates when the forecast changes.



ARROW LAKES RESERVOIR (ARD) FLOWS

Summary 1971 - 2019 and Actual / Forecast 2020

Forecast Date: Jun 25, 2020



Duncan Reservoir

- Duncan discharge was reduced to minimum (0.1 kcfs) since late May to refill the project and to reduce inflows into Kootenay Lake for flood risk management.
- Duncan is currently at about 1,860 feet, 4 feet below average.
- Inflows reached a 2-year return period flow this week.
- Flows should recede faster towards average conditions within a week as snowpack continues to diminish.
- Duncan discharge will increase on about mid to late July to control refill of Duncan to within 1 foot from full pool by the end of July.
- Flows at DRL (Duncan River below Lardeau) are currently expected to peak at about 12 kcfs in July, well below flood concerns.

DUNCAN RESERVOIR (DCN) LEVELS & FLOWS

Summary 1967 - 2019 and Actual / Forecast 2020/2021

