



All Nations Information Session

Mineral Tenure Act Modernization Office
July 17, 2024

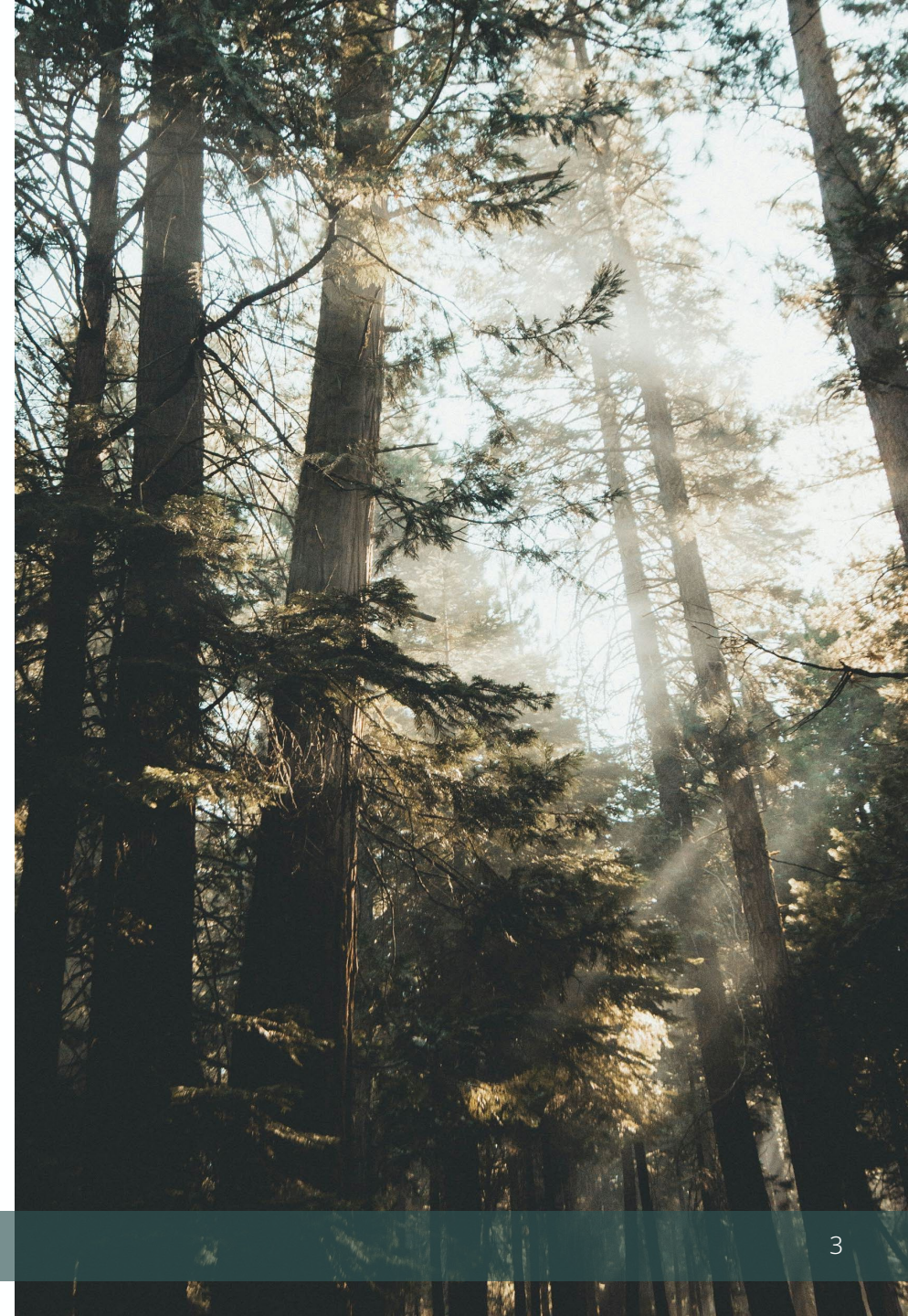


WELCOME

- Introductions
- Land acknowledgement

HOUSEKEEPING

- Session recording
- Name and Nation
- Q&A
 - Open dialogue and chat function
- Reference documents
 - Email mta@castlemain.com
 - Direct message tech moderator





AGENDA

- Path forward
- Discussion
- Overview of the Mineral Claims Consultation Framework (MCCF)
- Discussion
- Next Steps

Meeting objectives

Come to a shared understanding of the path forward

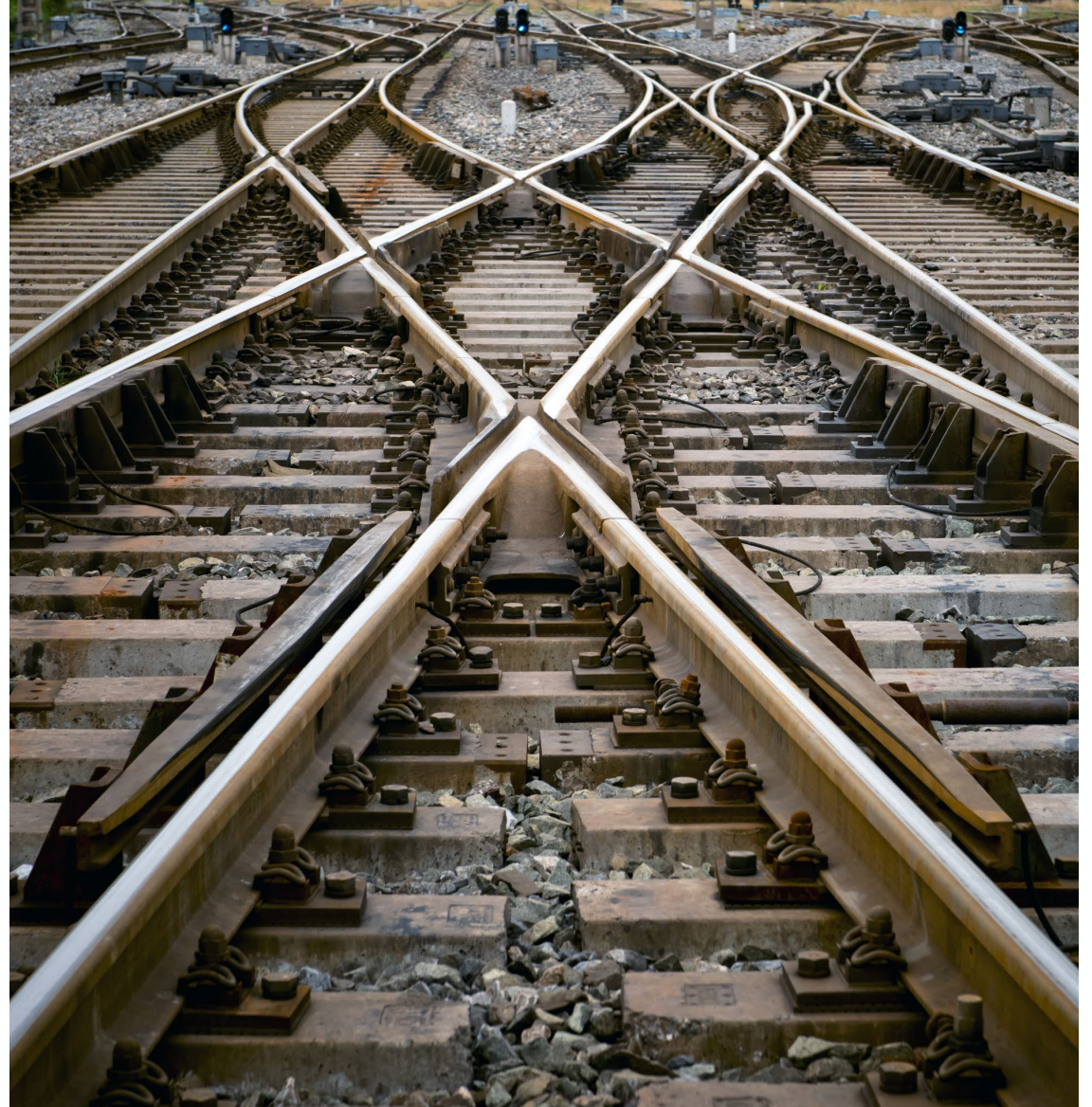
Share preliminary policy components for the Mineral Claim Consultation Framework

Discuss policy components for the Mineral Claim Consultation Framework

Path Forward

Track 1: Mineral Claims Consultation Framework (MCCF)

Track 2: Mineral Tenure Act Reform (MTA Reform)



Track 1: Mineral Claim Consultation Framework (MCCF)

- Responding to the September 2023, BCSC decision (Gitxaala v. British Columbia)
- Implement a consultation framework for mineral claim registration throughout the province of BC
- Implement by March 26, 2025

How will we consult and engage?

Consultation and cooperation:

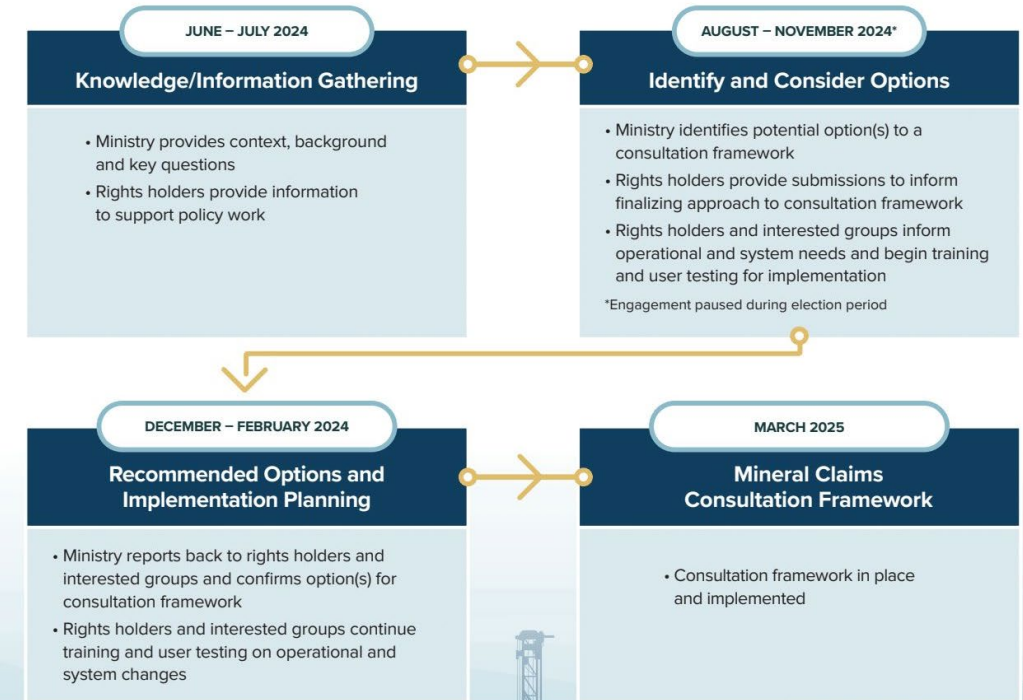
- Direct engagement with First Nations of BC (including Modern Treaty Nations), First Nations Leadership Council and First Nations Energy and Mining Council
- Bilateral discussions as requested
- Regularly updated website
- First Nations Technical Advisory Group*

*Technical tables

Engagement:

The Province will create opportunities for input from interested groups such as exploration companies, industry associations, mineral tenure holders, local governments, or ENGOs to be received.

What are the stages of the process?

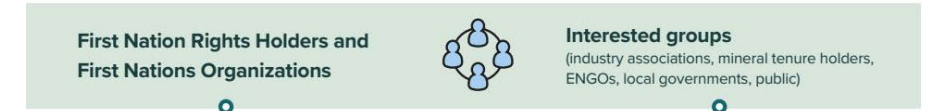


Track 2: MTA Reform

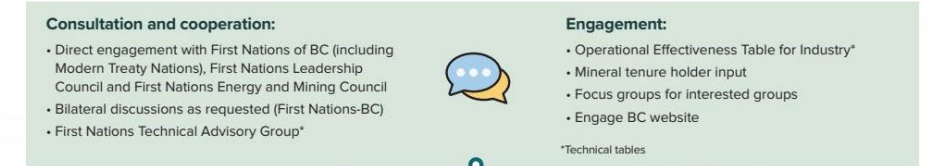
- Alignment of the *Mineral Tenure Act* with the *United Nations Declaration on the Rights of Indigenous People*.
- Work to be consistent with requirements under Section 3 of the *Declaration on the Rights of Indigenous People Act* (Declaration Act).
- Identified in Action 2.14 of the 2022 Declaration Act Action Plan

New Mineral Exploration Framework

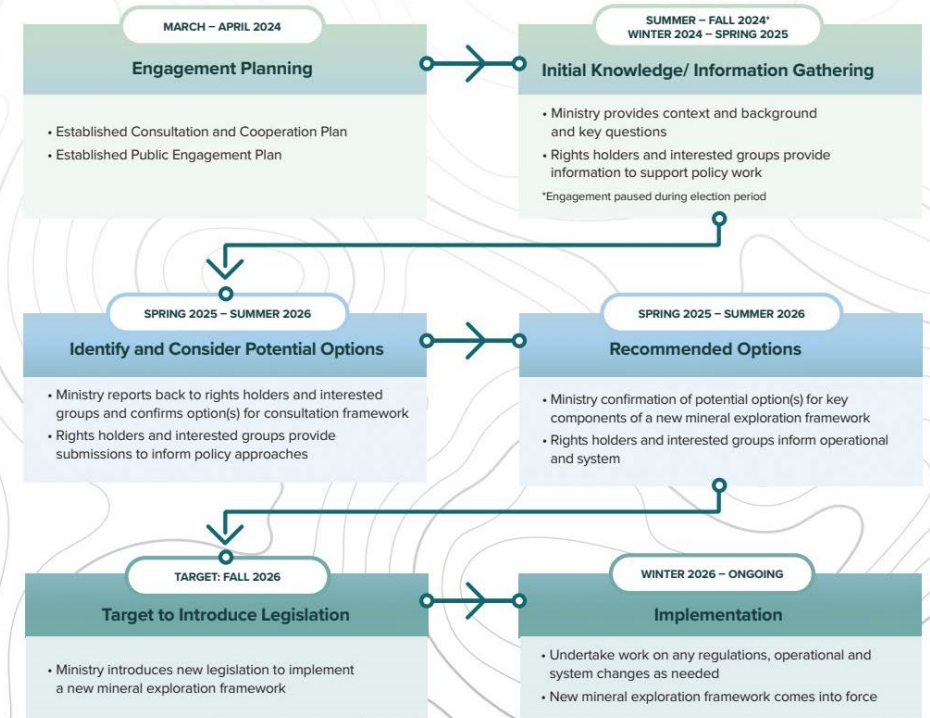
Who will we consult and engage?



How will we consult and engage?




What are the stages of the process?



Discussion

The image features a serene seascape with gentle waves under a soft, hazy sky. A semi-transparent blue rectangle is positioned on the right side of the frame, partially overlapping the water and sky. The word "Discussion" is centered in the lower-left area of the image.

A low-angle photograph of a forest canopy, looking up at the dense green leaves and dark tree trunks. Sunlight filters through the foliage, creating a bright, hazy glow in the upper center. The image is used as a background for the title text.

Mineral Claim Consultation Framework





MCCF - Key Components

- Notification and Information Sharing
- Managing Referrals
- Identifying Potential Impacts and Accommodations
- Implementing Accommodations

Notification and Information Sharing

Current system: No notification or information sharing with First Nations.

What we heard: Require a thorough application process and adequate information for proposed claims to identify potential impacts and issues through the consultation process.

Considerations in developing the MCCF: Currently, information requirements are focused on administrative information (Name, address, etc.), although may be expanded to include other information to support consultation and decision-making.

Managing the Volume of Referrals

Current system: No referrals for mineral claim registrations.

What we heard: The management of additional referrals presents significant capacity and resourcing challenges for First Nations.

Considerations in developing the MCCF: Under the current system, on Mineral Titles Online, a significant number of claim registrations occur each year. (~5000-8000/ year).

Potential Impacts and Accommodations

Current system: “Automatic” claims process does not allow for decision to be made about registration or require that impacted First Nation is notified. Potential impacts of mineral claim registrations are not identified or accommodated.

What we heard: Concern that proponents can register claims without being required to understand values, concerns, and priorities of impacted First Nations. Earlier meaningful consultation needed at the claim stage.

Considerations in developing the MCCF: Considering what types of potential impacts may be caused by claim registration and what measures may be needed to mitigate those impacts

Implementation of Accommodations

Current system: No consultation, impacts are not identified or accommodated.

What we heard: Suggestions - Impact assessments as part of claim applications and areas exempt from potential mineral staking

Considerations in developing the MCCF: Considering different mechanisms that are appropriate for implementing various accommodations – some of this can be achieved through a combination of legislation, regulations and orders. Other tools and system updates may also be required.



Next Steps for MCCF

- Information Gathering:

- Written submission on MCCF key components to MTA@gov.bc.ca
- Due July 31, 2024

- Proposed Policy Options:

- Policy options to be developed by EMLI in August and distributed in September for further feedback



Discussion

STAYING CONNECTED

Website: [HTTPS://ENGAGE.GOV.BC.CA/MTAREFORM/](https://engage.gov.bc.ca/mtareform/)

Email us at: MTA@GOV.BC.CA

